

CUB domain-containing protein 1 Antibody

Catalog No: #48377

Package Size: #48377-1 50ul #48377-2 100ul

Orders: order@signalwayantibody.comSupport: tech@signalwayantibody.com

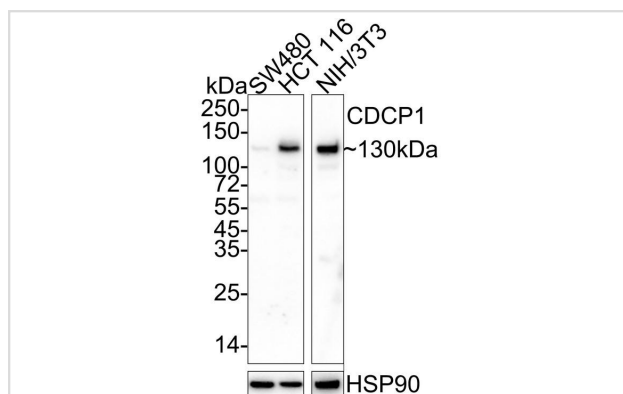
Description

Product Name	CUB domain-containing protein 1 Antibody
Host Species	Mouse
Clone No.	B2-E6
Purification	Protein affinity purified
Applications	WB,IHC,ICC
Species Reactivity	Hu, Ms, Rt
Immunogen Description	Recombinant protein within Human CDCP1
Other Names	9030022E12Rik antibody AA409659 antibody CD 318 antibody CD_antigen=CD318 antibody CD318 antibody CD318 antigen antibody CDCP 1 antibody Cdcp1 antibody CDCP1_HUMAN antibody CUB domain containing protein 1 antibody CUB domain-containing protein 1 antibody E030027H19Rik antibody FLJ13772 antibody FLJ22375 antibody FLJ22969 antibody Membrane glycoprotein gp140 antibody MGC31813 antibody OTTHUMP00000164120 antibody OTTHUMP00000209568 antibody RGD1305578 antibody SIMA 135 antibody SIMA135 antibody Subtractive immunization M plus HEP3 associated 135 kDa protein antibody Subtractive immunization M plus HEP3-associated 135 kDa protein antibody Transmembrane and associated with src kinases antibody TRASK antibody
Accession No.	Swiss-Prot#:Q9H5V8
Uniprot	Q9H5V8
GeneID	64866;
Calculated MW	93 kDa
Concentration	1ug/ul
Formulation	PBS (pH7.4), 0.1% BSA, 40% Glycerol. Preservative: 0.05% Sodium Azide.
Storage	Store at +4°C after thawing. Aliquot store at -20°C. Avoid repeated freeze / thaw cycles.

Application Details

WB 1:1000

Images



Western blot analysis of CDCP1 on different lysates at 1/1,000 dilution.

Lane 1: SW480 cell lysate

Lane 2: HCT 116 cell lysate

Lane 3: NIH/3T3 cell lysate (no heat)

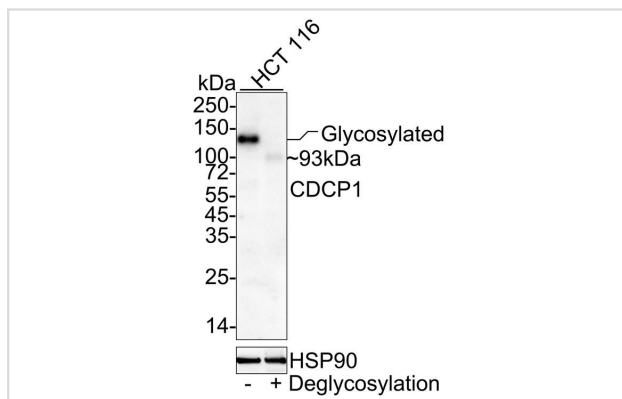
Lysates/proteins at 20 µg/Lane.

Predicted band size: 93 kDa

Observed band size: 130 kDa

Exposure time: Lane 1-2: 24 seconds; Lane 3: 10 seconds;

4-20% SDS-PAGE gel.



Western blot analysis of CDCP1 on different lysates at 1/1,000 dilution.

Lane 1: HCT 116 cell lysate

Lane 2: HCT 116 cell lysate treated with deglycosylation

Lysates/proteins at 14 µg/Lane.

Predicted band size: 93 kDa

Observed band size: 93/130 kDa (Glycosylated)

Exposure time: 3 minutes;

4-20% SDS-PAGE gel.

Background

CDCP1 (CUB-domain-containing protein 1) contains three extracellular CUB domains, a transmembrane domain, and two putative cytoplasmic tyrosine phosphorylation sites. Phosphorylation of the gp140 and p80 proteins is mediated by Src family kinases at various tyrosine residues, including Tyr 734. PTP family members mediate the desphosphorylation of CDCP1. The conversion of gp140 to p80 prolongs the phosphorylation state, which may affect signaling in epithelial wounds. CDCP1 acts as a marker for hematopoietic cells and also exhibits high expression in metastatic colon and breast tumors.

Note: This product is for in vitro research use only