

SOCS-1 Polyclonal Antibody

Catalog No: #41451

Package Size: #41451-1 50ul #41451-2 100ul

Orders: order@signalwayantibody.comSupport: tech@signalwayantibody.com

Description

Product Name	SOCS-1 Polyclonal Antibody
Host Species	Rabbit
Clonality	Polyclonal
Purification	The antibody was affinity-purified from rabbit antiserum by affinity-chromatography using epitope-specific immunogen.
Applications	WB ELISA
Species Reactivity	Hu Ms Rt
Specificity	SOCS-1 Polyclonal Antibody detects endogenous levels of SOCS-1 protein.
Immunogen Type	peptide
Immunogen Description	Synthesized peptide derived from the Internal region of human SOCS-1.
Target Name	SOCS-1
Other Names	SOCS1; SSI1; TIP3; Suppressor of cytokine signaling 1; SOCS-1; JAK-binding protein; JAB; STAT-induced STAT inhibitor 1; SSI-1; Tec-interacting protein 3; TIP-3
Accession No.	Swiss-Prot: O15524NCBI Gene ID: 8651
Uniprot	O15524
GeneID	8651;
SDS-PAGE MW	38kd
Concentration	1mg/ml
Formulation	Liquid in PBS containing 50% glycerol, 0.5% BSA and 0.02% sodium azide.
Storage	Store at -20°C/1 year

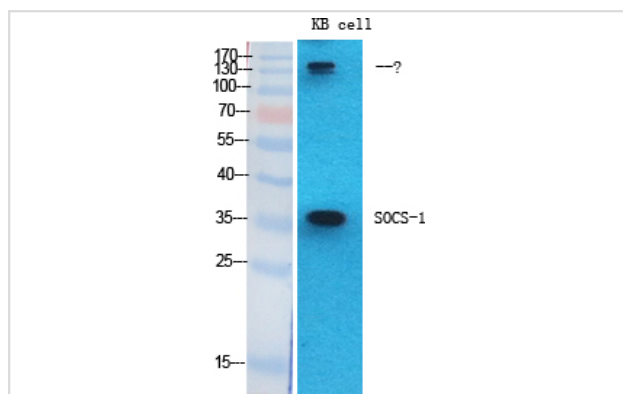
Application Details

Western Blot: 1/500 - 1/2000. Immunocytochemistry: 1/200 - 1/1000.

ELISA: 1/40000.

Not yet tested in other applications.

Images



Western Blot analysis of KB cells using SOCS-1 Polyclonal Antibody

Note: This product is for in vitro research use only