

HER2 / ErbB2 Antibody

Catalog No: #48493



Package Size: #48493-1 50ul #48493-2 100ul

Orders: order@signalwayantibody.com

Support: tech@signalwayantibody.com

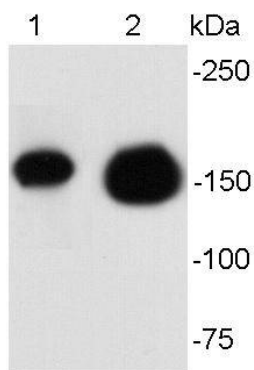
Description

Product Name	HER2 / ErbB2 Antibody
Host Species	Rabbit
Clonality	Polyclonal
Purification	Peptide affinity purified
Applications	WB, ICC, IHC
Species Reactivity	Hu
Immunogen Description	peptide
Other Names	Verb b2 erythroblastic leukemia viral oncogene homolog 2, neuro/glioblastoma derived oncogene homolog antibody C erb B2/neu protein antibody CD340 antibody CD340 antigen antibody Cerb B2/neu protein antibody CerbB2 antibody Erb b2 receptor tyrosine kinase 2 antibody ERBB2 antibody ERBB2_HUMAN antibody HER 2 antibody HER 2/NEU antibody HER2 antibody Herstatin antibody Human epidermal growth factor receptor 2 antibody Metastatic lymph node gene 19 protein antibody MLN 19 antibody MLN19 antibody NEU antibody NEU proto oncogene antibody Neuro/glioblastoma derived oncogene homolog antibody Neuroblastoma/glioblastoma derived oncogene homolog antibody NGL antibody p185erbB2 antibody Proto-oncogene c-ErbB-2 antibody Proto-oncogene Neu antibody Receptor tyrosine-protein kinase erbB-2 antibody TKR1 antibody Tyrosine kinase type cell surface receptor HER2 antibody Tyrosine kinase-type cell surface receptor HER2 antibody V erb b2 avian erythroblastic leukemia viral oncogene homolog 2 (neuro/glioblastoma derived oncogene homolog) antibody V erb b2 avian erythroblastic leukemia viral oncogene homolog 2 antibody V erb b2 avian erythroblastic leukemia viral oncoprotein 2 antibody V erb b2 erythroblastic leukemia viral oncogene homolog 2, neuro/glioblastoma derived oncogene homolog (avian) antibody V erb b2 erythroblastic leukemia viral oncogene homolog 2, neuro/glioblastoma derived oncogene homolog antibody Verb b2 erythroblastic leukemia viral oncogene homolog 2, neuro/glioblastoma derived oncogene homolog (avian) antibody
Accession No.	Swiss-Prot#:P04626
Uniprot	P04626
GeneID	2064;
Calculated MW	140kDa
Formulation	1*TBS (pH7.4), 0.5%BSA, 40%Glycerol. Preservative: 0.05% Sodium Azide.
Storage	Store at -20°C

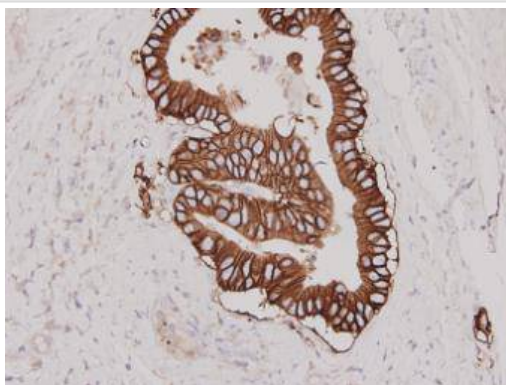
Application Details

WB: 1:500-1:1,000 IHC: 1:200ICC: 1:200

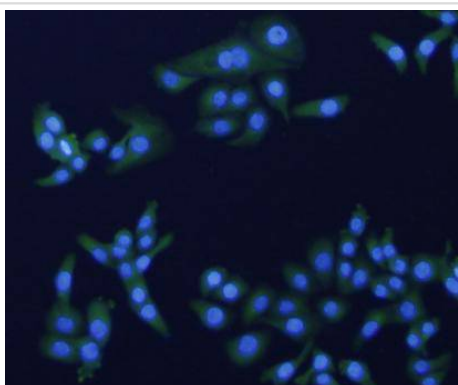
Images



Western blot analysis of ErbB2 on different cell lysates using anti-ErbB2 antibody at 1/500 dilution. Positive control:
Lane 1: SKOV-3
Lane 2: SKBR-3



Immunohistochemical analysis of paraffin-embedded human stomach carcinoma tissue using anti-Her 2 antibody. Counter stained with hematoxylin.



ICC staining ErbB2 in SKOV-3 cells (green). The nuclear counter stain is DAPI (blue). Cells were fixed in paraformaldehyde, permeabilised with 0.25% Triton X100/PBS.

Background

HER2 is a member of the human epidermal growth factor receptor (HER/EGFR/ERBB) family. Amplification or overexpression of this oncogene has been shown to play an important role in the development and progression of certain aggressive types of breast cancer. In recent years the protein has become an important biomarker and target of therapy for approx. 30% of breast cancer patients. Over-expression is also known to occur in ovarian, stomach, and aggressive forms of uterine cancer, such as uterine serous endometrial carcinoma. The expression of HER2 is regulated by signaling through estrogen receptors. Normally, estradiol and tamoxifen acting through the estrogen receptor down-regulate the expression of HER2. However, when the ratio of the coactivator AIB-3 exceeds that of the corepressor PAX2, the expression of HER2 is upregulated in the presence of tamoxifen, leading to tamoxifen-resistant breast cancer.

References

Note: This product is for in vitro research use only