

Dysferlin (DYSF) Antibody

Catalog No: #48508



Package Size: #48508-1 50ul #48508-2 100ul

Orders: order@signalwayantibody.com
Support: tech@signalwayantibody.com

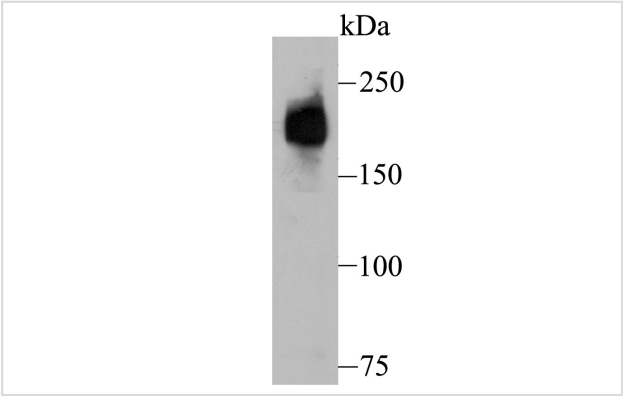
Description

Product Name	Dysferlin (DYSF) Antibody
Host Species	Rabbit
Clonality	Polyclonal
Purification	Protein affinity purified
Applications	WB,IHC,FC
Species Reactivity	Hu
Immunogen Description	Recombinant protein
Other Names	DMAT antibody DYSF antibody DYSF_HUMAN antibody Dysferlin antibody Dysferlin limb girdle muscular dystrophy 2B (autosomal recessive) antibody Dysferlin limb girdle muscular dystrophy 2B antibody Dystrophy associated fer 1 like 1 antibody Dystrophy associated fer 1 like protein antibody Dystrophy associated fer1 like 1 antibody Dystrophy associated fer1 like protein antibody Dystrophy-associated fer-1-like protein antibody Fer 1 like protein 1 antibody Fer-1-like protein 1 antibody Fer1 like protein 1 antibody FER1L1 antibody FLJ00175 antibody FLJ90168 antibody LGMD 2B antibody LGMD2B antibody Limb girdle muscular dystrophy 2B (autosomal recessive) antibody Limb girdle muscular dystrophy 2B antibody Miyoshi myopathy antibody MM antibody MMD1 antibody
Accession No.	Swiss-Prot#:O75923
Uniprot	O75923
GeneID	8291;
Calculated MW	237 kDa
Formulation	1*TBS (pH7.4), 0.5%BSA, 50%Glycerol. Preservative: 0.05% Sodium Azide.
Storage	Store at -20°C

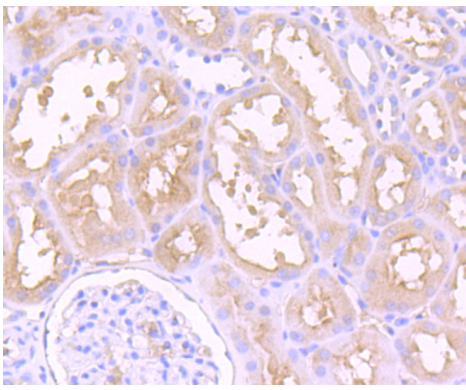
Application Details

WB: 1:500-1:2,000IHC: 1:50-1:200FC: 1:50-1:100

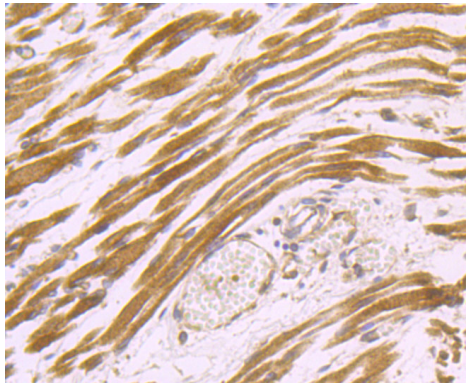
Images



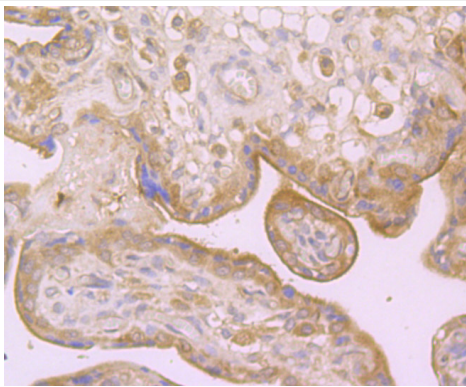
Western blot analysis of Dysferlin on human fetal skeletal muscle tissue lysate using anti-Dysferlin antibody at 1/500 dilution.



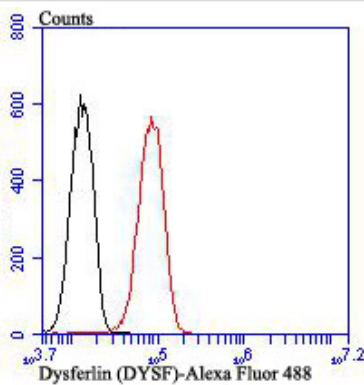
Immunohistochemical analysis of paraffin-embedded human kidney tissue using anti-Dysferlin antibody. Counter stained with hematoxylin.



Immunohistochemical analysis of paraffin-embedded human fetal skeletal muscle tissue using anti-Dysferlin antibody. Counter stained with hematoxylin.



Immunohistochemical analysis of paraffin-embedded human placenta tissue using anti-Dysferlin antibody. Counter stained with hematoxylin.



Flow cytometric analysis of HUVEC cells with Dysferlin antibody at 1/100 dilution (red) compared with an unlabelled control (cells without incubation with primary antibody; black). Alexa Fluor 488-conjugated goat anti rabbit IgG was used as the secondary antibody.

Background

Key calcium ion sensor involved in the Ca^{2+} -triggered synaptic vesicle-plasma membrane fusion. Plays a role in the sarcolemma repair mechanism of both skeletal muscle and cardiomyocytes that permits rapid resealing of membranes disrupted by mechanical stress.

References

Note: This product is for in vitro research use only