

Prostate-Specific Antigen (PSA) Antibody

Catalog No: #48511



Package Size: #48511-1 50ul #48511-2 100ul

Orders: order@signalwayantibody.com
Support: tech@signalwayantibody.com

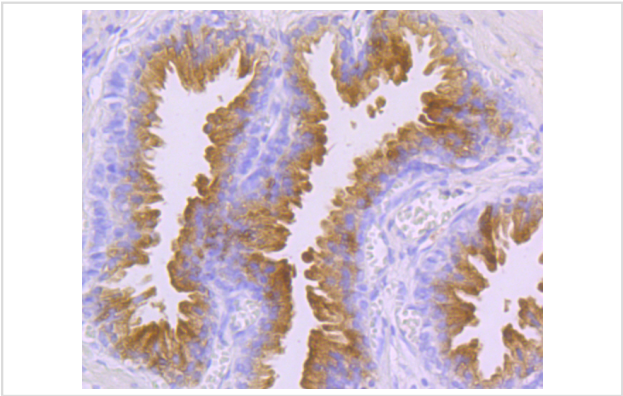
Description

Product Name	Prostate-Specific Antigen (PSA) Antibody
Host Species	Rabbit
Clonality	Polyclonal
Purification	Peptide affinity purified
Applications	IHC
Species Reactivity	Hu
Immunogen Description	Peptide
Other Names	antigen, prostate-specific antibody APS antibody Gamma seminoprotein antibody Gamma-seminoprotein antibody hK3 antibody Kallikrein 3 antibody Kallikrein related peptidase 3 antibody Kallikrein-3 antibody KLK 3 antibody KLK2A1 antibody Klk3 antibody KLK3_HUMAN antibody P-30 antigen antibody P30 antigen antibody Prostate-specific antigen antibody Psa antibody Semenogelase antibody Semin in antibody
Accession No.	Swiss-Prot#:P07288
Uniprot	P07288
GeneID	354;
Calculated MW	26 kDa
Formulation	1*TBS (pH7.4), 0.5%BSA, 50%Glycerol. Preservative: 0.05% Sodium Azide.
Storage	Store at -20°C

Application Details

IHC: 1:50-1:200

Images



Immunohistochemical analysis of paraffin-embedded human prostate tissue using anti-PSA antibody. Counter stained with hematoxylin.

Background

Prostate specific antigen (PSA), also designated γ-seminoprotein, semin in, p30 antigen, semenogelase, and kallikrein 3 (KLK3), was first identified as

a glycoprotein in human seminal plasma. PSA was determined by sequence similarity to be a member of the kallikrein subfamily of trypsin proteases. PSA is a serine protease that hydrolyzes the major human seminal protein, the seminal plasma mobility inhibitor precursor, or semenogelin I (SPMIP or Sgl), which leads to semen liquification. PSA production and expression are highest in normal, benign hyperplastic and cancerous tissues of the prostate, PSA has also been detected in accessory male sex glands and in breast cancer. PSA has been identified as an aid in the early detection of prostate cancer and is a commonly used tumor marker.

References

Note: This product is for in vitro research use only