

Annexin A3 Antibody

Catalog No: #48531



Package Size: #48531-1 50ul #48531-2 100ul

Orders: order@signalwayantibody.com
Support: tech@signalwayantibody.com

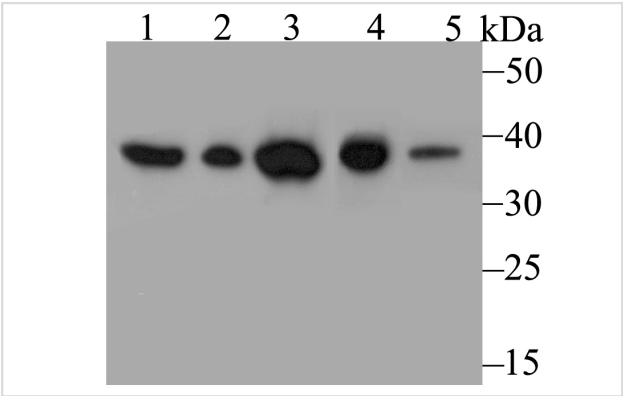
Description

Product Name	Annexin A3 Antibody		
Host Species	Rabbit		
Clonality	Polyclonal		
Purification	Protein affinity purified		
Applications	WB,IHC,FC		
Species Reactivity	Hu, Ms, Rt		
Immunogen Description	Recombinant protein with Human Annexin A3 aa 1-350.		
Other Names	2-cyclic phosphate 2-phosphohydrolase antibody 35-alpha calcimedlin antibody Annexin A3 antibody Annexin III antibody Annexin-3 antibody ANX3 antibody ANXA 3 antibody Anxa3 antibody ANXA3_HUMAN antibody Calcimedlin 35 alpha antibody Inositol 1 2 cyclic phosphate 2 phosphohydrolase antibody Inositol 1 antibody Lipocortin III antibody OTTHUMP00000160701 antibody OTTHUMP00000219237 antibody OTTHUMP00000219238 antibody PAP III antibody PAP-III antibody Placental anticoagulant protein III antibody		
Accession No.	Swiss-Prot#:P12429		
Uniprot	P12429		
GeneID	306;		
Calculated MW	36 kDa		
Formulation	1*TBS (pH7.4), 0.5%BSA, 50%Glycerol. Preservative: 0.05% Sodium Azide.		
Storage	Store at -20°C		

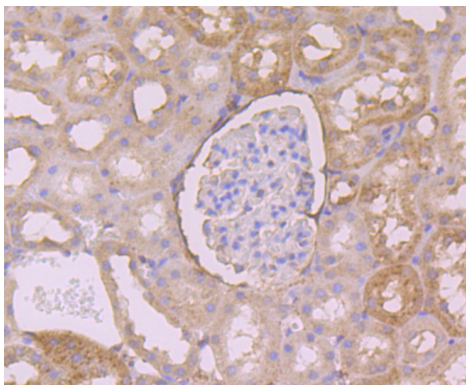
Application Details

WB: 1:500-1:2,000 IHC: 1:50-1:200FC: 1:50-1:100

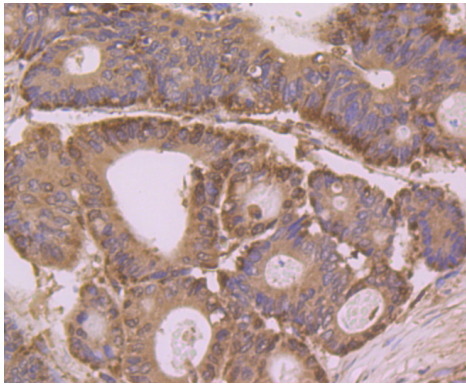
Images



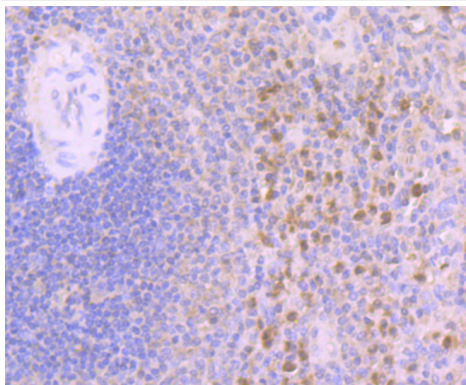
Western blot analysis of Annexin A3 on different lysates using anti-Annexin A3 antibody at 1/1,000 dilution. Positive controls: Lane1: Siha Lane2: Hela Lane3: Rat spleen tissue Lane4: Rat liver tissue Lane5: Mouse lung tissue



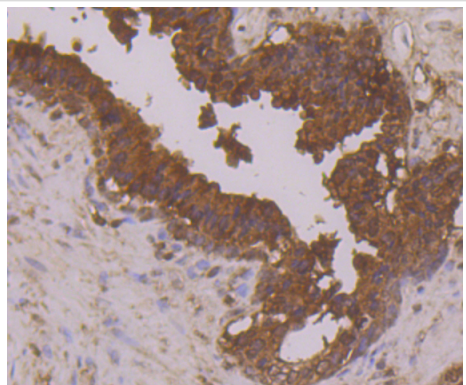
Immunohistochemical analysis of paraffin-embedded rat kidney tissue using anti-Annexin A3 antibody. Counter stained with hematoxylin.



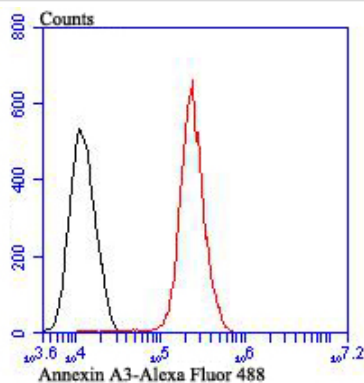
Immunohistochemical analysis of paraffin-embedded human colon cancer tissue using anti-Annexin A3 antibody. Counter stained with hematoxylin.



Immunohistochemical analysis of paraffin-embedded human spleen tissue using anti-Annexin A3 antibody. Counter stained with hematoxylin.



Immunohistochemical analysis of paraffin-embedded human prostate tissue using anti-Annexin A3 antibody. Counter stained with hematoxylin.



Flow cytometric analysis of A431 cells with Annexin A3 antibody at 1/100 dilution (red) compared with an unlabelled control (cells without incubation with primary antibody; black). Alexa Fluor 488-conjugated goat anti-rabbit IgG was used as the secondary antibody.

Background

The annexin family of calcium-binding proteins is composed of at least ten mammalian genes and is characterized by a conserved core domain, which binds phospholipids in a Ca^{2+} -dependent manner, and a unique amino-terminal region, which may confer binding specificity. Annexin family members have been implicated as regulators of such diverse processes as ion flux, endocytosis, exocytosis and cellular adhesion. Annexin III, also known as ANXA3, Annexin A3, Lipocortin III, PAP-III (placental anticoagulant protein III), 35- α calcimedin or ANX3, belongs to the annexin family and contains four Annexin repeats. Annexin III exhibits a variety of functions, including anti-coagulant properties, an inhibitory role towards phospholipase A2 (PLA2) and an enzymatic function, cleaving the cyclic bond of inositol 1,2-cyclic phosphate to produce inositol 1-phosphate.

References

Note: This product is for in vitro research use only