

## Stat3 Polyclonal Antibody

Catalog No: #41464

Package Size: #41464-1 50ul #41464-2 100ul

Orders: order@signalwayantibody.com

Support: tech@signalwayantibody.com

## Description

|                       |   |
|-----------------------|---|
| Product Name          | Stat3 Polyclonal Antibody   |
| Host Species          | Rabbit  |
| Clonality             | Polyclonal  |
| Purification          | The antibody was affinity-purified from rabbit antiserum by affinity-chromatography using epitope-specific immunogen. |
| Applications          | WB IHC ELISA  |
| Species Reactivity    | Hu Ms Rt  |
| Specificity           | Stat3 Polyclonal Antibody detects endogenous levels of Stat3 protein.   |
| Immunogen Type        | peptide   |
| Immunogen Description | Synthesized peptide derived from human Stat3 around the non-phosphorylation site of Y705.                             |
| Target Name           | Stat3   |
| Other Names           | STAT3; APRF; Signal transducer and activator of transcription 3; Acute-phase response factor                          |
| Accession No.         | Swiss-Prot: P40763NCBI Gene ID: 6774  |
| Uniprot               | P40763  |
| GeneID                | 6774;   |
| SDS-PAGE MW           | 88kd  |
| Concentration         | 1mg/ml  |
| Formulation           | Liquid in PBS containing 50% glycerol, 0.5% BSA and 0.02% sodium azide.   |
| Storage               | Store at -20°C/1 year   |

## Application Details

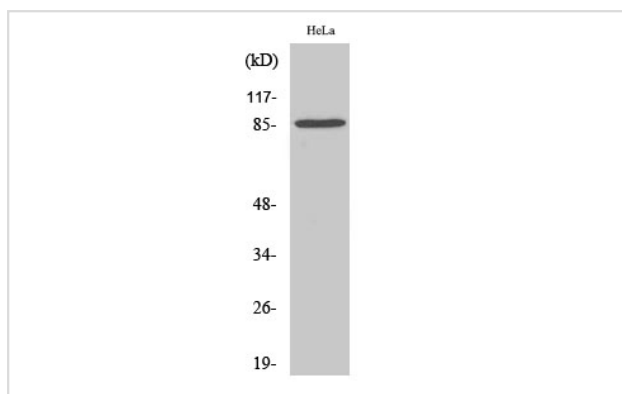
Western Blot: 1/500 - 1/2000.

Immunohistochemistry: 1/100 - 1/300.

ELISA: 1/5000.

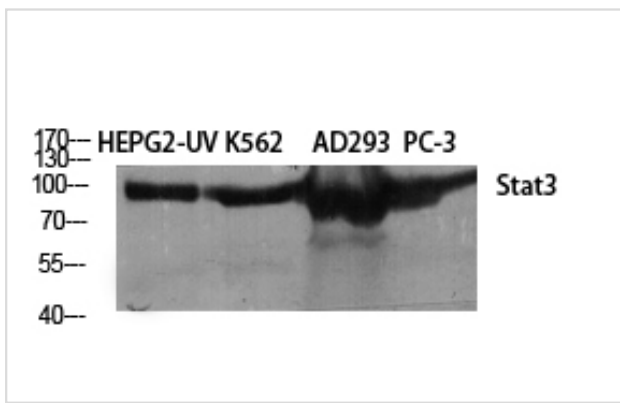
Not yet tested in other applications.

## Images



Western Blot analysis of NIH-3T3 cells using Stat3 Polyclonal Antibody

Western Blot analysis of HepG2 K562 AD293 PC3 cells using Stat3 Polyclonal Antibody



Note: This product is for in vitro research use only