

GRB2 Antibody

Catalog No: #48567



Package Size: #48567-1 50ul #48567-2 100ul

Orders: order@signalwayantibody.com
Support: tech@signalwayantibody.com

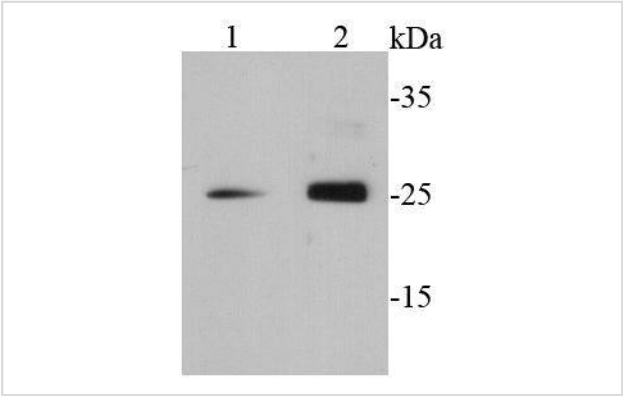
Description

Product Name	GRB2 Antibody
Host Species	Rabbit
Clonality	Polyclonal
Purification	Peptide affinity purified
Applications	WB, ICC, IHC, FC
Species Reactivity	Hu, Ms, Rt
Immunogen Description	peptide
Other Names	Abundant SRC homology antibody Adapter protein GRB2 antibody ASH antibody Ash protein antibody EGFRBP GRB2 antibody Epidermal growth factor receptor binding protein antibody Epidermal growth factor receptor binding protein GRB2 antibody GRB 2 antibody GRB2 adapter protein antibody Grb2 antibody GRB2_HUMAN antibody Grb3 3 antibody Growth factor receptor bound protein 2 antibody Growth factor receptor bound protein 3 antibody Growth factor receptor-bound protein 2 antibody HT027 antibody MST084 antibody MSTP084 antibody NCKAP2 antibody OTTHUMP00000166096 antibody OTTHUMP00000166097 antibody OTTHUMP00000166098 antibody Protein ash antibody SEM5 antibody SH2/SH3 adapter GRB2 antibody
Accession No.	Swiss-Prot#:P62993
Uniprot	P62993
GeneID	2885;
Calculated MW	25 kDa
Formulation	1*TBS (pH7.4), 1%BSA, 40%Glycerol. Preservative: 0.05% Sodium Azide.
Storage	Store at -20°C

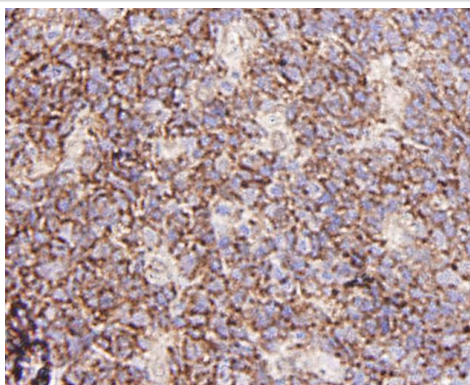
Application Details

WB: 1:500 IHC: 1:200 ICC: 1:200 FC: 1:100-1:200

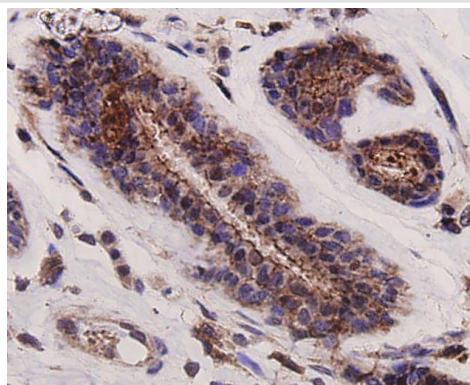
Images



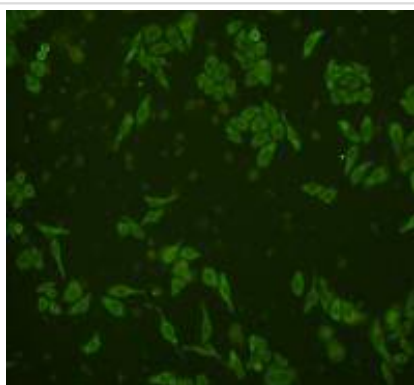
Western blot analysis of GRB2 on different cell lysates using anti-GRB2 antibody at 1/500 dilution.



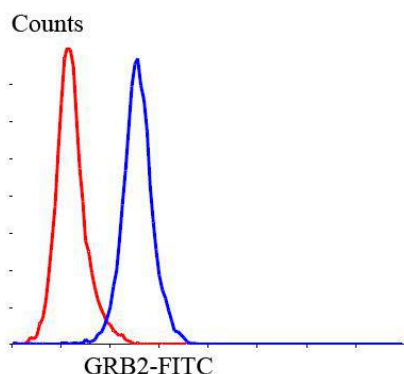
Immunohistochemical analysis of paraffin-embedded human tonsil tissue using anti-GRB2 antibody. Counter stained with hematoxylin.



Immunohistochemical analysis of paraffin-embedded human breast cancer tissue using anti-GRB2 antibody. Counter stained with hematoxylin.



ICC staining GRB2 in HepG2 cells (green). Cells were fixed in paraformaldehyde, permeabilised with 0.25% Triton X100/PBS.



Flow cytometric analysis of SHG-44 cells with GRB2 antibody at 1/100 dilution (blue) compared with an unlabelled control (cells without incubation with primary antibody; red). Goat anti rabbit IgG (FITC) was used as the secondary antibody.

Background

Grb2 is widely expressed and is essential for multiple cellular functions. Inhibition of Grb2 function impairs developmental processes in various organisms and blocks transformation and proliferation of various cell types, and so it is not surprising that a targeted gene disruption of Grb2 in mouse is lethal at an early embryonic stage. Grb2 is best known for its ability to link the epidermal growth factor receptor tyrosine kinase to the activation of Ras and its downstream kinases, ERK1,2. Grb2 is composed of an SH2 domain flanked on each side by an SH3 domain. Grb2 has two closely related proteins with similar domain organizations, Gads and Grap. Gads and Grap are expressed specifically in hematopoietic cells and function in the coordination of tyrosine kinase mediated signal transduction. The SH2 domain of Grb2 binds to phosphorylated tyrosine-containing peptides on receptors or scaffold proteins with a preference for pY-X-N-X, where X is generally a hydrophobic residue such as valine.

References

Note: This product is for in vitro research use only