

Stat5 Polyclonal Antibody

Catalog No: #41466

Package Size: #41466-1 50ul #41466-2 100ul

Orders: order@signalwayantibody.comSupport: tech@signalwayantibody.com

Description

Product Name	Stat5 Polyclonal Antibody
Host Species	Rabbit
Clonality	Polyclonal
Purification	The antibody was affinity-purified from rabbit antiserum by affinity-chromatography using epitope-specific immunogen.
Applications	WB IHC ELISA
Species Reactivity	Hu Ms Rt
Specificity	Stat5 Polyclonal Antibody detects endogenous levels of Stat5 protein.
Immunogen Type	peptide
Immunogen Description	Synthesized peptide derived from the Internal region of human Stat5.
Target Name	Stat5
Other Names	STAT5A; STAT5; Signal transducer and activator of transcription 5A; STAT5B; Signal transducer and activator of transcription 5B
Accession No.	Swiss-Prot: P42229/P51692NCBI Gene ID: 6776/6777
Uniprot	P42229
GeneID	6776;
SDS-PAGE MW	90kd
Concentration	1mg/ml
Formulation	Liquid in PBS containing 50% glycerol, 0.5% BSA and 0.02% sodium azide.
Storage	Store at -20°C/1 year

Application Details

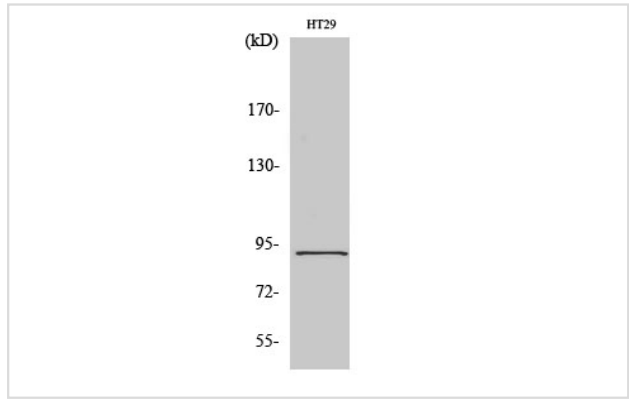
Western Blot: 1/500 - 1/2000.

Immunohistochemistry: 1/100 - 1/300.

ELISA: 1/10000.

Not yet tested in other applications.

Images



Western Blot analysis of HT29 cells using Stat5 Polyclonal Antibody

Note: This product is for in vitro research use only