

Glucose Transporter GLUT1 Rabbit mAb

Catalog No: #48596



Package Size: #48596-1 50ul #48596-2 100ul

Orders: order@signalwayantibody.com

Support: tech@signalwayantibody.com

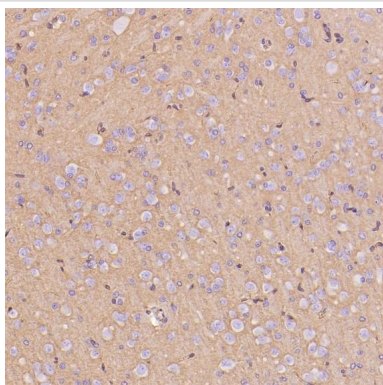
Description

Product Name	Glucose Transporter GLUT1 Rabbit mAb
Clone No.	SA0377
Purification	Affinity-chromatography
Applications	WB, ICC/IF, IHC, FC
Species Reactivity	Hu, Ms, Rt
Immunogen Description	A synthesized peptide derived from human Glucose Transporter GLUT1
Other Names	Choreoathetosis/spasticity episodic (paroxysmal choreoathetosis/spasticity) antibody CSE antibody DYT17 antibody DYT18 antibody DYT9 antibody EIG12 antibody erythrocyte/brain antibody Erythrocyte/hepatoma glucose transporter antibody facilitated glucose transporter member 1 antibody Glucose transporter 1 antibody Glucose transporter type 1 antibody Glucose transporter type 1, erythrocyte/brain antibody GLUT antibody GLUT-1 antibody GLUT1 antibody GLUT1DS antibody GLUTB antibody GT1 antibody GTG1 antibody Gtg3 antibody GTR1_HUMAN antibody HepG2 glucose transporter antibody HTLVVR antibody Human T cell leukemia virus (I and II) receptor antibody MGC141895 antibody MGC141896 antibody PED antibody RATGTG1 antibody Receptor for HTLV 1 and HTLV 2 antibody SLC2A1 antibody Solute carrier family 2 (facilitated glucose transporter), member 1 antibody Solute carrier family 2 antibody Solute carrier family 2, facilitated glucose transporter member 1 antibody
Accession No.	Swiss-Prot#:P11166
Uniprot	P11166
GeneID	6513;
Calculated MW	54 kDa
Concentration	0.3mg/ml
Formulation	Rabbit IgG in 10mM phosphate buffered saline , pH 7.4, 150mM sodium chloride, 0.05% BSA, 0.02% sodium azide and 50% glycerol.
Storage	Store at +4°C short term. Store at -20°C long term. Avoid freeze / thaw cycle.

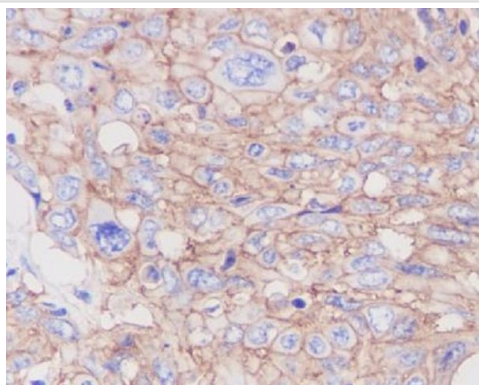
Application Details

WB 1:500~1:2000 IHC 1:50~1:200 ICC/IF 1:50~1:200 FC 1:50

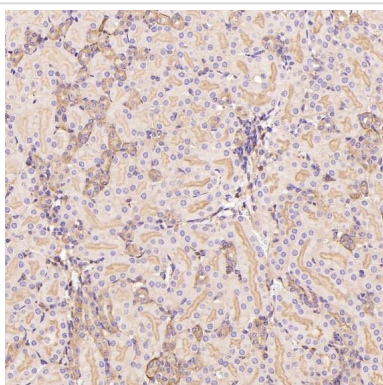
Images



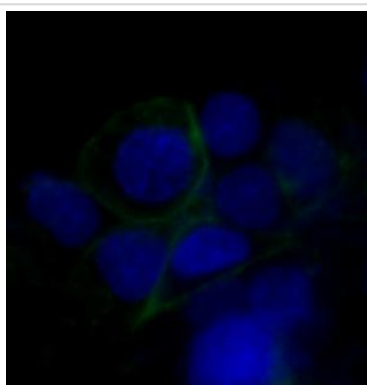
Immunohistochemical analysis of paraffin-embedded Rat hippocampus , using the Antibody at 1:300 dilution.



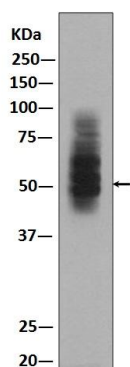
Immunohistochemical analysis of paraffin-embedded human cervix cancer, using GLUT1 Antibody.



Immunohistochemical analysis of paraffin-embedded Mouse kidney, using the Antibody at 1:300 dilution.



Immunofluorescent analysis of HepG2 cells, using GLUT1 Antibody .



Western blot analysis of GLUT1 expression in HepG2 lysate.

Background

GLUT1 an integral membrane protein that plays an important role in the glycolytic pathway by serving as a uniporter for glucose. One of 13 members of the human equilibrative glucose transport protein family. Transports a wide range of aldoses, including both pentoses and hexoses, and dehydroascorbic acid. Shown to transport water against an osmotic gradient.

Note: This product is for in vitro research use only