

Phospho-Rb(S807) Rabbit mAb

Catalog No: #13345



Package Size: #13345-1 50ul #13345-2 100ul

Orders: [order@signalwayantibody.com](mailto:order@signalwayantibody.com)  
Support: [tech@signalwayantibody.com](mailto:tech@signalwayantibody.com)

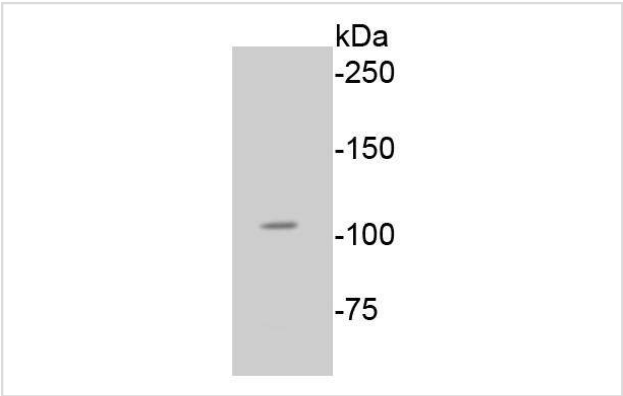
Description

|                       |  |
|-----------------------|--|
| Product Name          | Phospho-Rb(S807) Rabbit mAb  |
| Host Species          | Rabbit   |
| Clonality             | Monoclonal   |
| Clone No.             | SR3-82   |
| Purification          | ProA affinity purified   |
| Applications          | WB, ICC/IF, IHC  |
| Species Reactivity    | Hu, Ms, Rt   |
| Immunogen Description | Synthetic phospho-peptide corresponding to residues surrounding Ser807 of human Rb.  |
| Other Names           | OSRC antibody Osteosarcoma antibody p105-Rb antibody P105RB antibody PP105 antibody pp110 antibody PPP1R130 antibody pRb antibody Prepro retinoblastoma associated protein antibody Protein phosphatase 1 regulatory subunit 130 antibody Rb antibody RB_HUMAN antibody RB1 antibody RB1 gene antibody Retinoblastoma 1 antibody Retinoblastoma susceptibility protein antibody Retinoblastoma-associated protein antibody |
| Accession No.         | Swiss-Prot#:P06400   |
| Uniprot               | P06400   |
| GeneID                | 5925;  |
| Calculated MW         | 106 kDa  |
| Formulation           | 1*TBS (pH7.4), 1%BSA, 40%Glycerol. Preservative: 0.05% Sodium Azide.   |
| Storage               | Store at -20°C   |

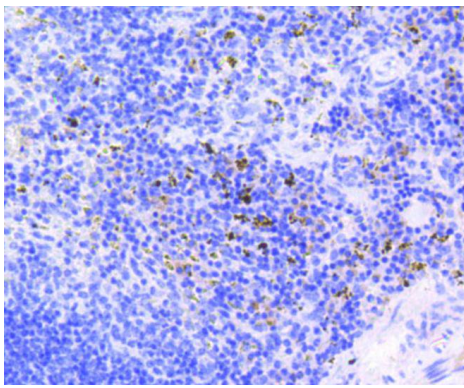
Application Details

WB: 1:1,000-1:2,000 IHC: 1:50-1:200ICC: 1:50-1:200

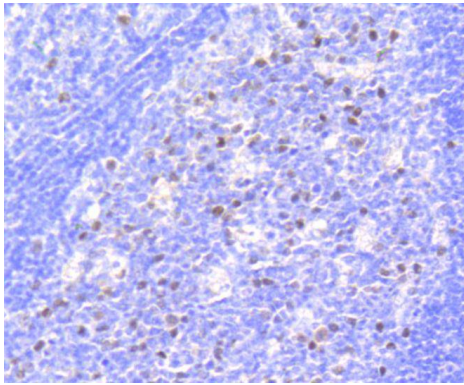
Images



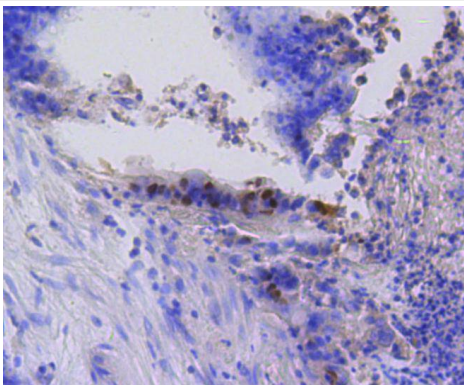
Western blot analysis of Phospho-Rb(S807) on A549 cell lysates using anti-Phospho-Rb(S807) antibody at 1/1,000 dilution.



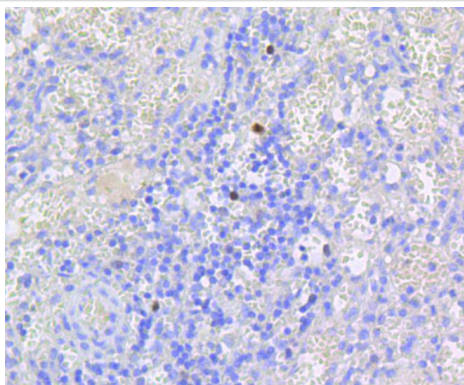
Immunohistochemical analysis of paraffin-embedded mouse spleen tissue using anti-Phospho-Rb(S807) antibody. Counter stained with hematoxylin.



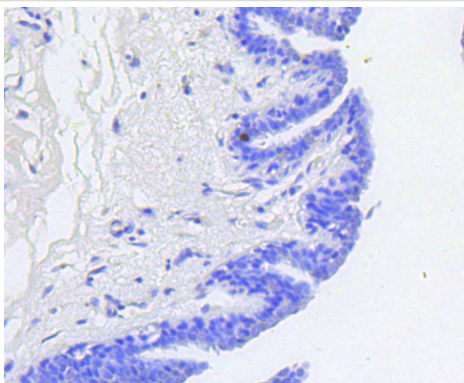
Immunohistochemical analysis of paraffin-embedded human tonsil tissue using anti-Phospho-Rb(S807) antibody. Counter stained with hematoxylin.



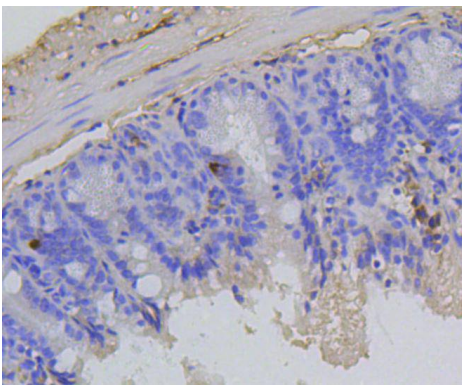
Immunohistochemical analysis of paraffin-embedded human colon cancer tissue using anti-Phospho-Rb(S807) antibody. Counter stained with hematoxylin.



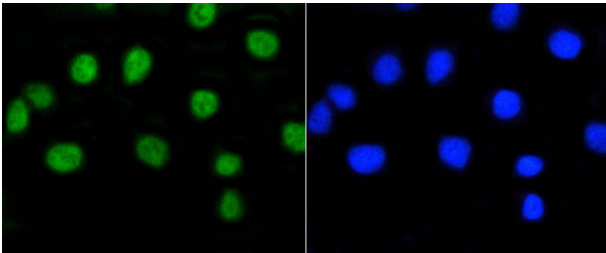
Immunohistochemical analysis of paraffin-embedded human spleen tissue using anti-Phospho-Rb(S807) antibody. Counter stained with hematoxylin.



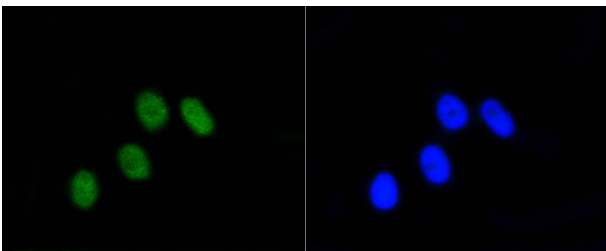
Immunohistochemical analysis of paraffin-embedded human breast carcinoma tissue using anti-Phospho-Rb(S807) antibody. Counter stained with hematoxylin.



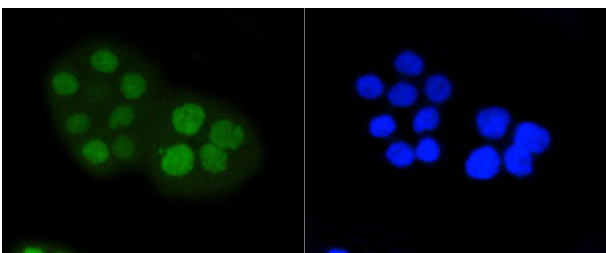
Immunohistochemical analysis of paraffin-embedded mouse colon tissue using anti-Phospho-Rb(S807) antibody. Counter stained with hematoxylin.



ICC staining Phospho-Rb(S807) in A549 cells (green). The nuclear counter stain is DAPI (blue). Cells were fixed in paraformaldehyde, permeabilised with 0.25% Triton X100/PBS.



ICC staining Phospho-Rb(S807) in MCF-7 cells (green). The nuclear counter stain is DAPI (blue). Cells were fixed in paraformaldehyde, permeabilised with 0.25% Triton X100/PBS.



ICC staining Phospho-Rb(S807) in CRC cells (green). Cells were fixed in paraformaldehyde, permeabilised with 0.25% Triton X100/PBS.

## Background

Pediatric cancer retinoblastoma and the formation of other human tumors can be attributed to mutations in the retinoblastoma tumor suppressor gene (Rb). The Rb protein regulates differentiation, apoptosis and cell cycle control by coordinating the cell cycle at G1-S with transcriptional machinery. During G1, cyclin D-dependent kinase-mediated phosphorylation of Rb at Ser 795 marks the conversion of Rb from a transcriptionally repressive, hypophosphorylated state to an inactive, phosphorylated state, which may be sustained through mitosis by differential phosphorylation of up to 16 putative serine or threonine residues, including Ser 249/Thr 252, Thr 373, Thr 356, Ser 780, Ser-807/ Ser 811 and Thr 821/Thr 826. Hypophosphorylated Rb represses the transcription of genes controlling the cell cycle through direct protein-protein interactions and through the recruitment of histone deacetylase.

## References

---

---

Note: This product is for in vitro research use only