

CD8 alpha Rabbit mAb

Catalog No: #48750



Package Size: #48750-1 50ul #48750-2 100ul

Orders: order@signalwayantibody.comSupport: tech@signalwayantibody.com

Description

Product Name	CD8 alpha Rabbit mAb
Clone No.	SR4519
Purification	ProA affinity purified
Applications	WB;IF/ICC;IHC;FC
Species Reactivity	Hu
Immunogen Description	recombinant protein
Other Names	alpha polypeptide (p32) antibody CD8 antibody CD8 antigen alpha polypeptide antibody CD8 antigen alpha polypeptide (p32) antibody CD8a antibody CD8A antigen antibody CD8A molecule antibody CD8A_HUMAN antibody Leu2 antibody Leu2 T lymphocyte antigen antibody Ly3 antibody LYT3 antibody MAL antibody OKT8 T cell antigen antibody OTTHUMP00000160760 antibody OTTHUMP00000160764 antibody OTTHUMP00000203528 antibody OTTHUMP00000203721 antibody p32 antibody T cell antigen Leu2 antibody T cell co receptor antibody T-cell surface glycoprotein CD8 alpha chain antibody T-lymphocyte differentiation antigen T8/Leu-2 antibody T8 T cell antigen antibody T8/Leu-2 T-lymphocyte differentiation antigen antibody
Accession No.	Swiss-Prot#:P01732
Uniprot	P01732
GeneID	925;
Calculated MW	26 kDa
Formulation	1*TBS (pH7.4), 1%BSA, 40%Glycerol. Preservative: 0.05% Sodium Azide.
Storage	Store at -20°C

Application Details

WB 1:2,000-1:5,000;

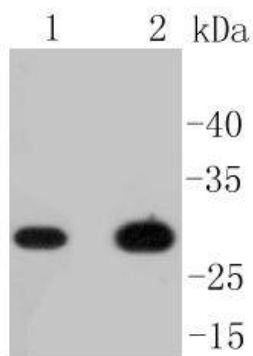
IF-Cell 1:100-1:200;

IF-Tissue 1:100-1:200;

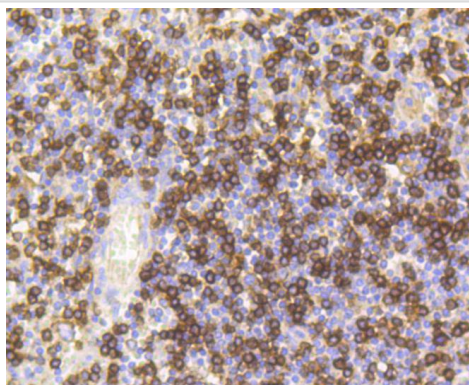
IHC-P 1:100-1:200;

FC 1:500-1:1,000

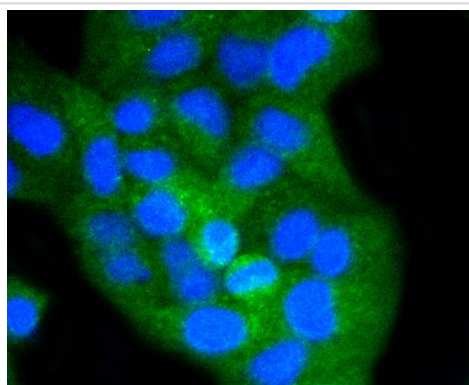
Images



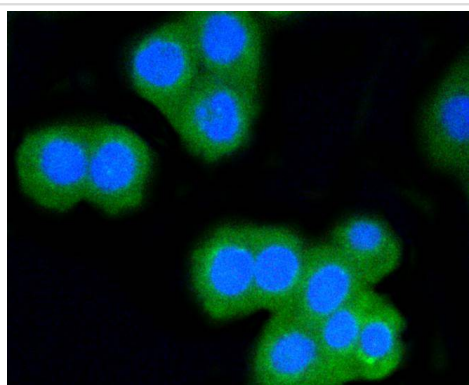
Western blot analysis of CD8 alpha on different lysates using anti-CD8 alpha antibody at 1/1,000 dilution. Positive control:
Lane 1: Hela Lane 2: Lovo



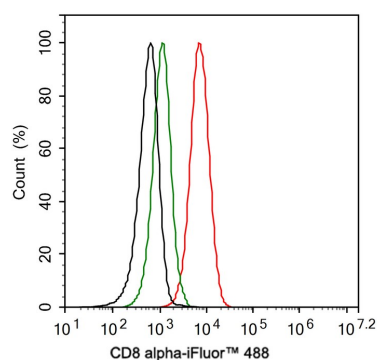
Immunohistochemical analysis of paraffin-embedded human spleen tissue using anti-CD8 alpha antibody. Counter stained with hematoxylin.



ICC staining CD8 alpha in Hela cells (green). The nuclear counter stain is DAPI (blue). Cells were fixed in paraformaldehyde, permeabilised with 0.25% Triton X100/PBS.



ICC staining CD8 alpha in CRC cells (green). The nuclear counter stain is DAPI (blue). Cells were fixed in paraformaldehyde, permeabilised with 0.25% Triton X100/PBS.



Flow cytometric analysis of Jurkat cells labeling CD8 alpha. Cells were fixed and permeabilized. Then stained with the primary antibody (1ug/ml) (red) compared with Rabbit IgG Isotype Control (green). After incubation of the primary antibody at +4°C for an hour, the cells were stained with a iFluor 488 conjugate-Goat anti-Rabbit IgG Secondary antibody at 1/1,000 dilution for 30 minutes at +4°C. Unlabelled sample was used as a control (cells without incubation with primary antibody; black).

Background

The T cell receptor (TCR) is a heterodimer composed of either α and β or γ and δ chains. CD3 chains and the CD4 or CD8 (CD8- α and CD8- β) co-receptors are also required for efficient signal transduction through the TCR. The TCR is expressed on T helper and T cytotoxic cells that can be distinguished by their expression of CD4 and CD8 proteins; T helper cells express CD4 proteins and T cytotoxic cells display CD8 proteins. CD8s are cell surface glycoproteins that exist as two chain complex ($\alpha\alpha$ or $\alpha\beta$) receptors that bind class I MHC molecules presented by the antigen-presenting cell (APC). A primary function of CD8 proteins is to facilitate antigen recognition by the TCR and to strengthen the avidity of the TCR-antigen interactions. An additional role for CD8-expressing T cells may be to maintain low levels of HIV expression.

Note: This product is for in vitro research use only