

Apaf-1 Rabbit mAb

Catalog No: #48769



Package Size: #48769-1 50ul #48769-2 100ul

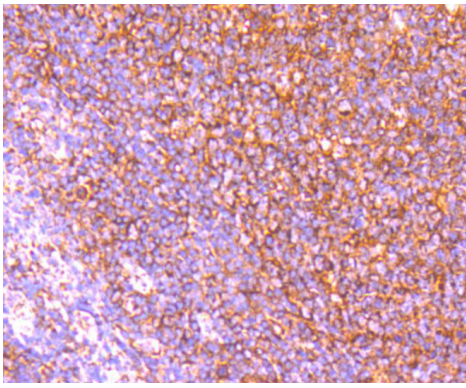
Orders: [order@signalwayantibody.com](mailto:order@signalwayantibody.com)  
Support: [tech@signalwayantibody.com](mailto:tech@signalwayantibody.com)

Description	
Product Name	Apaf-1 Rabbit mAb
Host Species	Recombinant Rabbit
Clonality	Monoclonal antibody
Clone No.	SY22-02
Purification	ProA affinity purified
Applications	WB, ICC/IF, IHC
Species Reactivity	Hu, Ms
Immunogen Description	recombinant protein
Other Names	APAF 1 antibody Apaf-1 antibody APAF_HUMAN antibody Apaf1 antibody Apoptotic peptidase activating factor 1 antibody Apoptotic protease activating factor 1 antibody Apoptotic protease activating factor antibody Apoptotic protease-activating factor 1 antibody CED 4 antibody CED4 antibody KIAA0413 antibody
Accession No.	Swiss-Prot#:O14727
Uniprot	O14727
GeneID	317;
Calculated MW	141 kDa
Formulation	1*TBS (pH7.4), 1%BSA, 40%Glycerol. Preservative: 0.05% Sodium Azide.
Storage	Store at -20°C

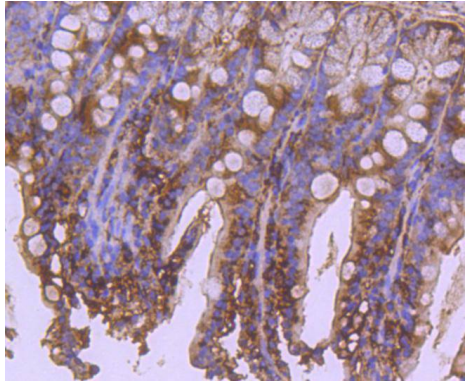
Application Details	
WB: 1:1,000IHC: 1:50-1:200ICC: 1:50-1:200	

Images

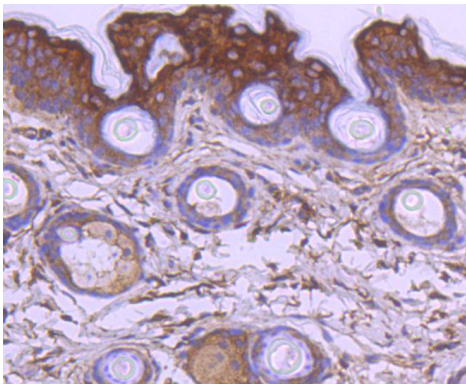
Western blot analysis of Apaf-1 on HUVEC cell lysates using anti-Apaf-1 antibody at 1/1,000 dilution.



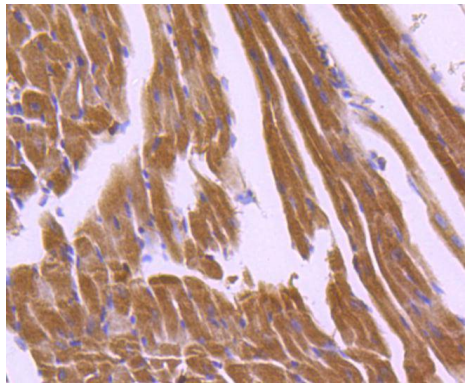
Immunohistochemical analysis of paraffin-embedded human tonsil tissue using anti-Apaf-1 antibody. Counter stained with hematoxylin.



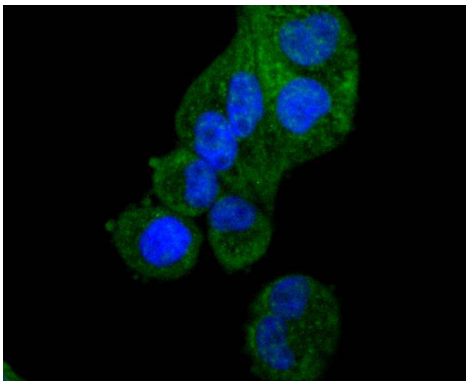
Immunohistochemical analysis of paraffin-embedded mouse colon tissue using anti-Apaf-1 antibody. Counter stained with hematoxylin.



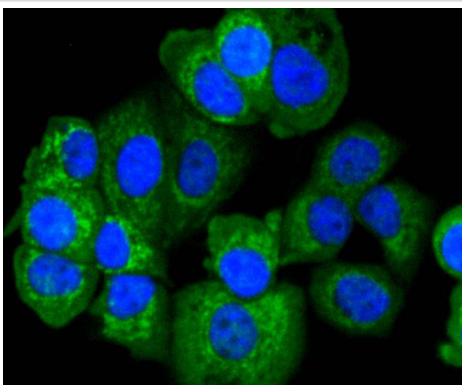
Immunohistochemical analysis of paraffin-embedded mouse skin tissue using anti-Apaf-1 antibody. Counter stained with hematoxylin.



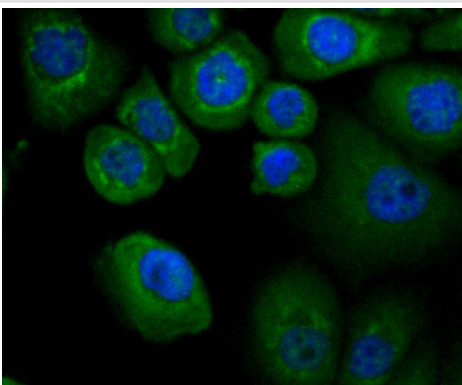
Immunohistochemical analysis of paraffin-embedded mouse heart tissue using anti-Apaf-1 antibody. Counter stained with hematoxylin.



ICC staining Apaf-1 in HeLa cells (green). The nuclear counter stain is DAPI (blue). Cells were fixed in paraformaldehyde, permeabilised with 0.25% Triton X100/PBS.



ICC staining Apaf-1 in MCF-7 cells (green). The nuclear counter stain is DAPI (blue). Cells were fixed in paraformaldehyde, permeabilised with 0.25% Triton X100/PBS.



ICC staining Apaf-1 in Ags cells (green). The nuclear counter stain is DAPI (blue). Cells were fixed in paraformaldehyde, permeabilised with 0.25% Triton X100/PBS.

## Background

The mammalian homologs of the Ced-4 proteins, Apaf-1 (Ced-4), Nod1 (CARD4), and Nod2 contain a caspase recruitment domain (CARD) and a putative nucleotide binding domain, signified by a consensus Walker's A box (P-loop) and B box (Mg<sup>2+</sup>-binding site). Nod1 contains a putative regulatory domain and multiple leucine-rich repeats. Nod1 is a member of a growing family of intracellular proteins which share structural homology to the apoptosis regulator Apaf-1. Nod1 associates with the CARD-containing kinase RICK and activates NFκB. The self-association of Nod1 mediates proximity of RICK and the interaction of RICK with IKKγ. In addition, Nod-1 binds to multiple caspases with long prodomains, but specifically activates caspase-9 and promotes caspase-9-induced apoptosis. Nod2 is composed of two N-terminal CARDS, a nucleotide-binding domain, and multiple C-terminal leucine-rich repeats. The expression of Nod2 is highly restricted to monocytes, and activates NFκB in response to bacterial lipopoly-saccharides.

## References

Note: This product is for in vitro research use only