

EpCAM Rabbit mAb

Catalog No: #48817



Package Size: #48817-1 50ul #48817-2 100ul

Orders: order@signalwayantibody.com

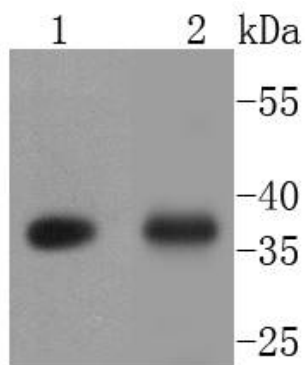
Support: tech@signalwayantibody.com

Description

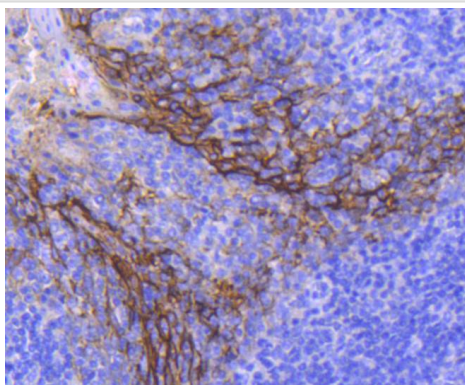
Product Name	EpCAM Rabbit mAb
Host Species	Recombinant Rabbit
Clonality	Monoclonal antibody
Clone No.	SU03-32
Purification	ProA affinity purified
Applications	WB, IHC
Species Reactivity	Hu, Ms, Rt
Immunogen Description	recombinant protein
Other Names	17 1A antibody 323/A3 antibody Adenocarcinoma associated antigen antibody Adenocarcinoma-associated antigen antibody Antigen identified by monoclonal antibody AUA1 antibody AUA1 antibody CD326 antibody CD326 antigen antibody Cell surface glycoprotein Trop 1 antibody Cell surface glycoprotein Trop 2 antibody Cell surface glycoprotein Trop-1 antibody CO 17A antibody CO17 1A antibody CO17A antibody DIAR5 antibody EGP 2 antibody EGP antibody EGP2 antibody EGP314 antibody EGP40 antibody Ep CAM antibody Ep-CAM antibody EPCAM antibody EPCAM_HUMAN antibody EpCAM1 antibody Epithelial cell adhesion molecule antibody Epithelial Cell Adhesion Molecule Intracellular Domain (EpCAM-ICD) antibody Epithelial cell surface antigen antibody Epithelial cellular adhesion molecule antibody Epithelial glycoprotein 1 antibody Epithelial glycoprotein 314 antibody Epithelial glycoprotein antibody ESA antibody GA733 1 antibody GA733 2 antibody GA733-2 antibody gastrointestinal tumor-associated antigen 2, 35-KD glycoprotein antibody gp4 antibody hEGP 2 antibody hEGP314 antibody HNPCC8 antibody Human epithelial glycoprotein 2 antibody KS 1/4 antigen antibody KS1/4 antibody KSA antibody Ly74 antibody Lymphocyte antigen 74 antibody M1S 1 antibody M1S2 antibody M4S1 antibody Major gastrointestinal tumor associated protein GA733 2 antibody Major gastrointestinal tumor-associated protein GA733-2 antibody mEGP314 antibody Membrane component chromosome 4 surface marker (35kD glycoprotein) antibody Membrane component, chromosome 4, surface marker 1 antibody Membrane component, chromosome 4, surface marker antibody MIC18 antibody MK 1 antibody Protein 289A antibody TACD1 antibody TACSTD1 antibody TROP1 antibody Tumor associated calcium signal transducer 1 antibody Tumor associated calcium signal transducer 2 precursor antibody Tumor-associated calcium signal transducer 1 antibody
Accession No.	Swiss-Prot#:P16422
Uniprot	P16422
GeneID	4072;
Calculated MW	35 kDa
Formulation	1*TBS (pH7.4), 1%BSA, 40%Glycerol. Preservative: 0.05% Sodium Azide.
Storage	Store at -20°C

Application Details

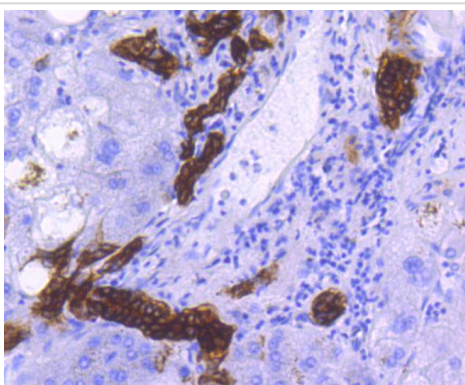
WB: 1:1,000-1:2,000 IHC: 1:100-1:500



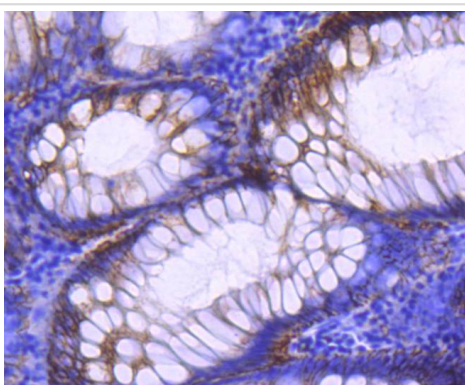
Western blot analysis of EpCAM on different lysates using anti-EpCAM antibody at 1/1,000 dilution. Positive control:
Lane 1: HCT116
Lane 2: SW480



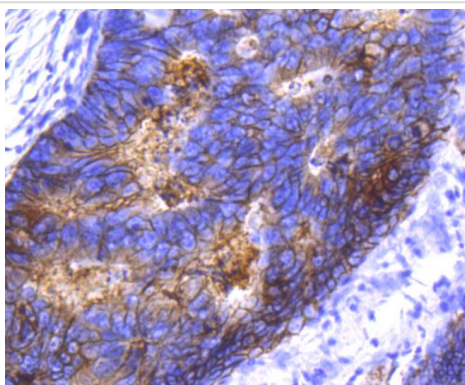
Immunohistochemical analysis of paraffin-embedded human tonsil tissue using anti-EpCAM antibody. Counter stained with hematoxylin.



Immunohistochemical analysis of paraffin-embedded human liver tissue using anti-EpCAM antibody. Counter stained with hematoxylin.



Immunohistochemical analysis of paraffin-embedded human colon tissue using anti-EpCAM antibody. Counter stained with hematoxylin.



Immunohistochemical analysis of paraffin-embedded human colon cancer tissue using anti-EpCAM antibody. Counter stained with hematoxylin.

Background

EPCAM is a carcinoma-associated antigen and belongs to a family which includes at least 2 type I membrane proteins. The EPCAM protein has a role in embryonic stem cells proliferation and differentiation. EPCAM is used as a target for immunotherapy treatment of human carcinomas. EPCAM is expressed on most normal epithelial cells and gastrointestinal carcinomas and acts as a homotypic calcium-independent cell adhesion molecule. Epithelial cell adhesion molecules (EPCAM) can act as a physical homophilic interaction molecule between intestinal epithelial cells (IECs) and intraepithelial lymphocytes (IELs) at the mucosal epithelium for supplying immunological barrier as a first line of defense against mucosal infection. EPCAM gene mutations result in congenital tufting enteropathy.

References

Note: This product is for in vitro research use only