

Phospho-Nrf2(S40) Rabbit mAb

Catalog No: #13360



Package Size: #13360-1 50ul #13360-2 100ul

Orders: [order@signalwayantibody.com](mailto:order@signalwayantibody.com)  
Support: [tech@signalwayantibody.com](mailto:tech@signalwayantibody.com)

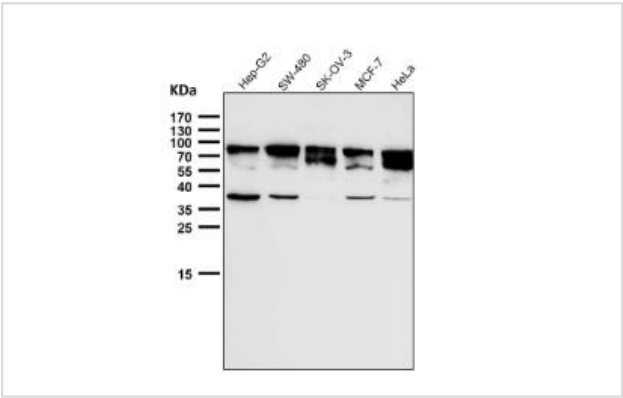
Description

Product Name	Phospho-Nrf2(S40) Rabbit mAb
Clone No.	SU0334
Purification	Affinity-chromatography
Applications	WB,IHC,ICC/IF,IP,FC
Species Reactivity	Hu
Immunogen Description	A synthesized peptide derived from human Phospho-Nrf2 (S40)
Other Names	erythroid derived 2 antibody HEBP1 antibody like 2 antibody NF E2 related factor 2 antibody NF-E2-related factor 2 antibody NF2L2_HUMAN antibody NFE2 related factor 2 antibody NFE2-related factor 2 antibody Nfe2l2 antibody Nrf 2 antibody NRF2 antibody Nuclear factor (erythroid derived 2) like 2 antibody Nuclear factor antibody nuclear factor erythroid 2 like 2 antibody Nuclear factor erythroid 2 related factor 2 antibody Nuclear factor erythroid 2-related factor 2 antibody Nuclear factor erythroid derived 2 like 2 antibody
Accession No.	Swiss-Prot#:Q16236
Uniprot	Q16236
GeneID	4780;
Calculated MW	90 kDa
Formulation	Rabbit IgG in phosphate buffered saline , pH 7.4, 150mM NaCl, 0.02% sodium azide and 50% glycerol.
Storage	Store at +4°C short term. Store at -20°C long term. Avoid freeze / thaw cycle.

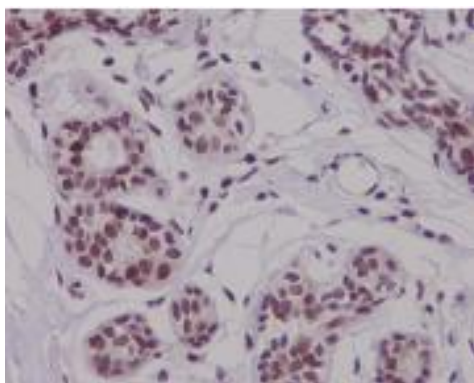
Application Details

WB 1:1000~1:2000 IHC 1:50~1:200 ICC/IF 1:50~1:200 IP 1:50 FC 1:50

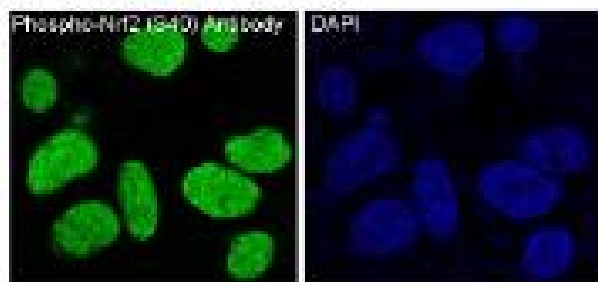
Images



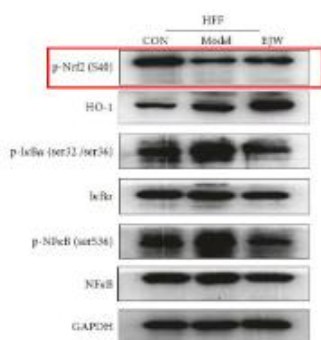
All lanes use the Antibody at 1:5K dilution for 1 hour at room temperature.



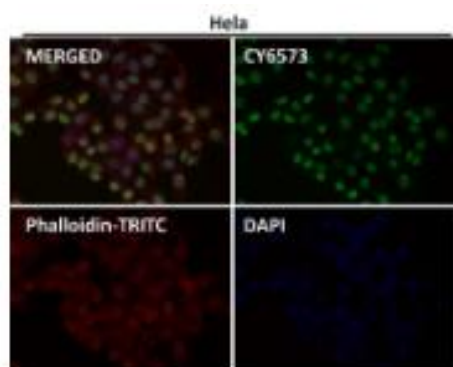
Immunohistochemical analysis of paraffin-embedded human breast carcinoma, using Phospho-Nrf2 (S40) Antibody.



Immunofluorescent analysis of HepG2 cells, using Phospho-Nrf2 (S40) Antibody.



Erjingwan Extracts Exert Antiaging Effects of Skin through Activating Nrf2 and Inhibiting NF- $\kappa$ B. -Evidence-based Complementary and Alternative Medicine



Immunofluorescent analysis using the Antibody at 1:50 dilution.

## Background

Transcription activator that binds to antioxidant response (ARE) elements in the promoter regions of target genes. Important for the coordinated up-regulation of genes in response to oxidative stress. May be involved in the transcriptional activation of genes of the beta-globin cluster by mediating enhancer activity of hypersensitive site 2 of the beta-globin locus control region.

---

Note: This product is for in vitro research use only