

PRMT5 Rabbit mAb

Catalog No: #48880



Package Size: #48880-1 50ul #48880-2 100ul

Orders: order@signalwayantibody.com

Support: tech@signalwayantibody.com

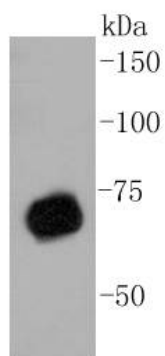
Description

Product Name	PRMT5 Rabbit mAb
Host Species	Recombinant Rabbit
Clonality	Monoclonal antibody
Clone No.	ST51-06
Purification	ProA affinity purified
Applications	WB, ICC/IF, IHC
Species Reactivity	Hu, Ms, Rt
Immunogen Description	recombinant protein
Other Names	72 kDa ICln binding protein antibody 72 kDa ICln-binding protein antibody ANM5_HUMAN antibody Histone synthetic lethal 7, S. cerevisiae, homolog of antibody Histone-arginine N-methyltransferase PRMT5 antibody HMT1 hnRNP methyltransferase like 5 antibody HOMOLOG OF; SKB1 antibody HRMT1L5 antibody IBP72 antibody Jak-binding protein 1 antibody JBP 1 antibody JBP1 antibody PRMT 5 antibody PRMT5 antibody Protein arginine methyltransferase 5 antibody Protein arginine N methyltransferase 5 antibody Protein arginine N methyltransferase 5 N terminally processed antibody Protein arginine N-methyltransferase 5 antibody S. POMBE antibody S. POMBE HOMOLOG OF; SKB1 antibody SHK1 KINASE BINDING PROTEIN 1 antibody Shk1 kinase binding protein 1 homolog antibody Shk1 kinase-binding protein 1 homolog antibody Shk1 kinase/binding protein 1, S. pombe, homolog of antibody SKB 1 antibody SKB1 antibody SKB1 homolog antibody SKB1: SKB1 homolog (S. pombe) antibody SKB1Hs antibody
Accession No.	Swiss-Prot#:O14744
Uniprot	O14744
GeneID	10419;
Calculated MW	73 kDa
Formulation	1*TBS (pH7.4), 1%BSA, 40%Glycerol. Preservative: 0.05% Sodium Azide.
Storage	Store at -20°C

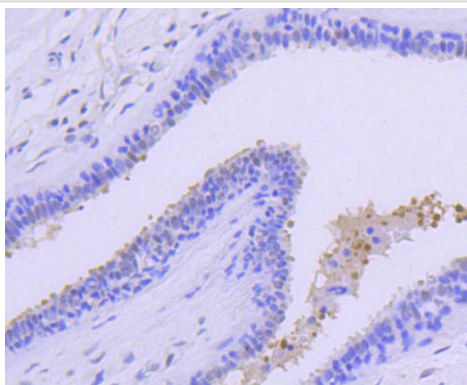
Application Details

WB: 1:1,000-1:2,000 IHC: 1:50-1:200 ICC: 1:50-1:200

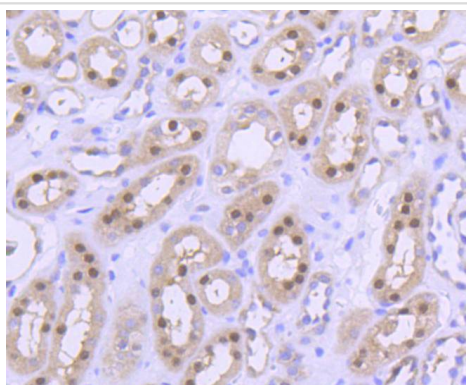
Images



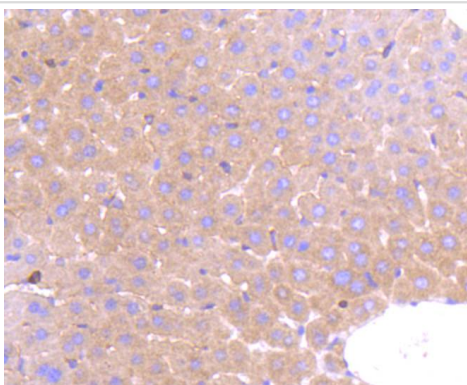
Western blot analysis of PRMT5 on A431 cell lysates using anti-PRMT5 antibody at 1/1,000 dilution.



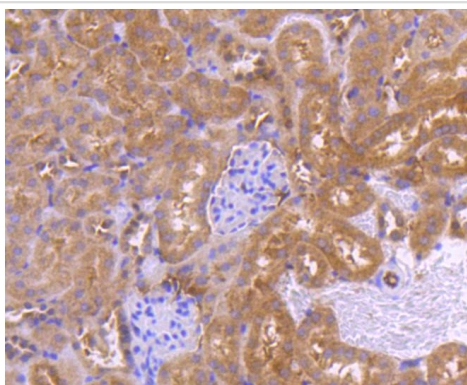
Immunohistochemical analysis of paraffin-embedded human breast carcinoma tissue using anti-PRMT5 antibody. Counter stained with hematoxylin.



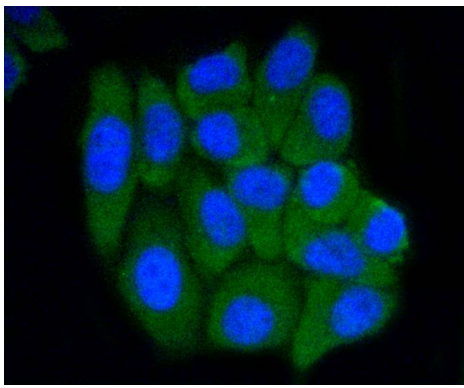
Immunohistochemical analysis of paraffin-embedded human kidney tissue using anti-PRMT5 antibody. Counter stained with hematoxylin.



Immunohistochemical analysis of paraffin-embedded mouse liver tissue using anti-PRMT5 antibody. Counter stained with hematoxylin.



Immunohistochemical analysis of paraffin-embedded mouse kidney tissue using anti-PRMT5 antibody. Counter stained with hematoxylin.



ICC staining PRMT5 in HepG2 cells (green). The nuclear counter stain is DAPI (blue). Cells were fixed in paraformaldehyde, permeabilised with 0.25% Triton X100/PBS.

Background

The formation of the spliceosome includes the assembly of Sm proteins in an ordered manner onto snRNAs. This process is mediated by the survival of a motor neuron (SMN) protein and is enhanced by modification of specific Arginine residues in the Sm proteins to symmetrical dimethylarginines (sDMAs). sDMA modification of Sm proteins is catalyzed by the methylosome, a complex comprised of the type II methyltransferase PRMT5, also designated JAK-binding protein 1), (JBP1), pICln, and two novel factors. PRMT5 binds the Sm proteins via their Arginine- and Glycine-rich (RG) domains, while pICln binds the Sm domains. PRMT5 is a distinct member of the protein-Arginine methyltransferase (PRMT) family, and predominantly localizes to the cytoplasm in a wide variety of tissues. PRMT5 also associates specifically with the transcription start site region of the cyclin E1 promoter, and, therefore, is involved in the control of transcription and proliferation. The gene encoding human PRMT5 maps to chromosome 14q11.

References

Note: This product is for in vitro research use only