

PIM1 Rabbit mAb

Catalog No: #48894



Package Size: #48894-1 50ul #48894-2 100ul

Orders: [order@signalwayantibody.com](mailto:order@signalwayantibody.com)  
Support: [tech@signalwayantibody.com](mailto:tech@signalwayantibody.com)

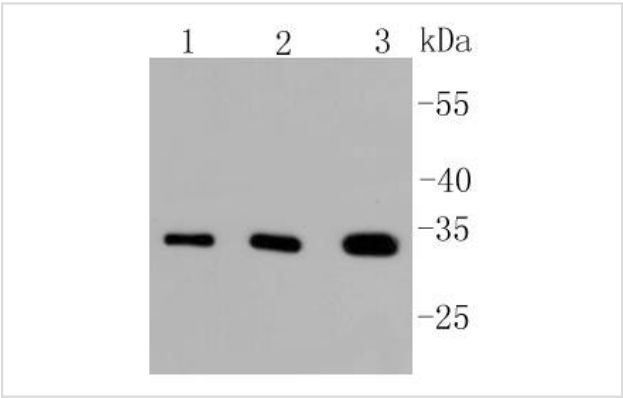
Description

|                       |   |
|-----------------------|---|
| Product Name          | PIM1 Rabbit mAb   |
| Host Species          | Recombinant Rabbit  |
| Clonality             | Monoclonal antibody   |
| Clone No.             | ST0513  |
| Purification          | ProA affinity purified  |
| Applications          | WB, ICC/IF, IHC   |
| Species Reactivity    | Hu, Ms  |
| Immunogen Description | recombinant protein   |
| Other Names           | Oncogene PIM 1 antibody Oncogene PIM1 antibody PIM 1 antibody pim 1 kinase 44 kDa isoform antibody Pim 1 kinase antibody pim 1 oncogene (proviral integration site 1) antibody Pim 1 oncogene antibody PIM antibody PIM1 antibody pim1 kinase 44 kDa isoform antibody PIM1_HUMAN antibody Pim2 antibody PIM3 antibody Proto oncogene serine/threonine protein kinase Pim 1 antibody Proto-oncogene serine/threonine-protein kinase Pim-1 antibody Proviral integration site 1 antibody Proviral integration site 2 antibody |
| Accession No.         | Swiss-Prot#:P11309  |
| Uniprot               | P11309  |
| GenelD                | 5292;   |
| Calculated MW         | 32 kDa  |
| Formulation           | 1*TBS (pH7.4), 1%BSA, 40%Glycerol. Preservative: 0.05% Sodium Azide.  |
| Storage               | Store at -20°C  |

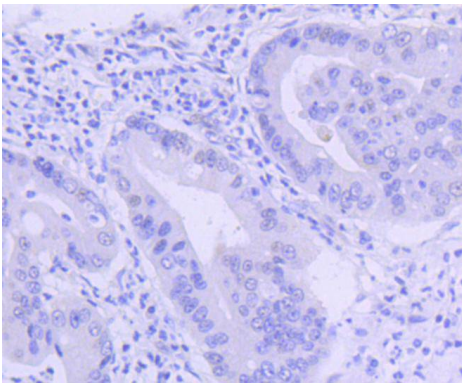
Application Details

WB: 1:1,000-1:2,000 IHC: 1:50-1:200ICC: 1:50-1:200

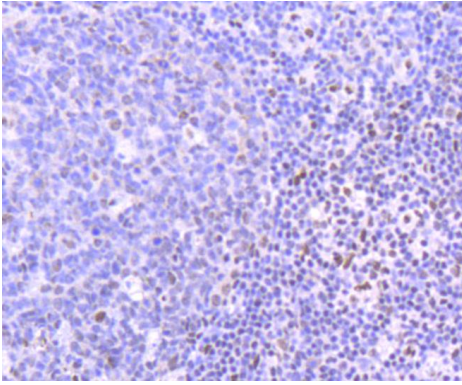
Images



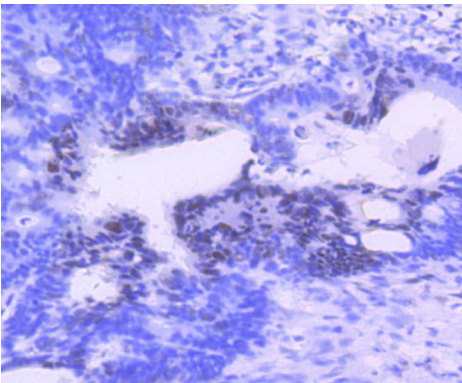
Western blot analysis of PIM1 on different lysates using anti-PIM1 antibody at 1/1,000 dilution. Positive control: Lane 1: BT-20 Lane 2: HepG2 Lane 3: SW480



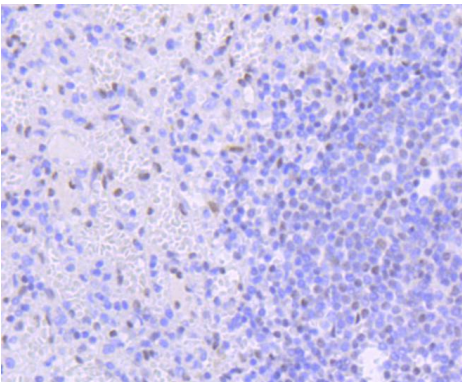
Immunohistochemical analysis of paraffin-embedded human gastric carcinoma tissue using anti-PIM1 antibody. Counter stained with hematoxylin.



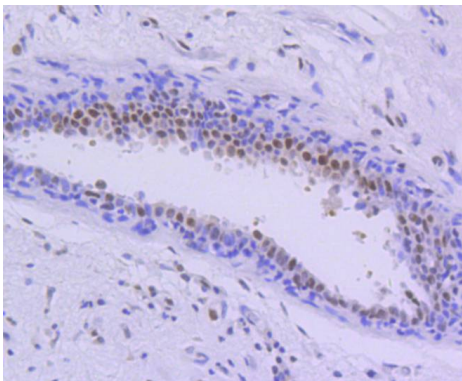
Immunohistochemical analysis of paraffin-embedded human tonsil tissue using anti-PIM1 antibody. Counter stained with hematoxylin.



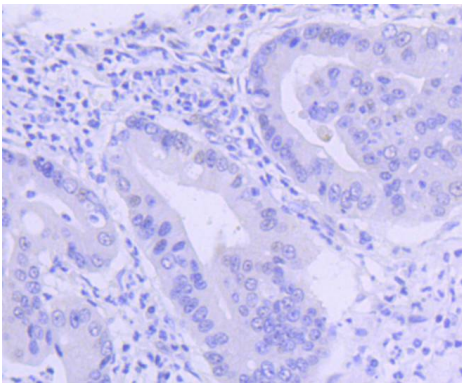
Immunohistochemical analysis of paraffin-embedded human colon cancer tissue using anti-PIM1 antibody. Counter stained with hematoxylin.



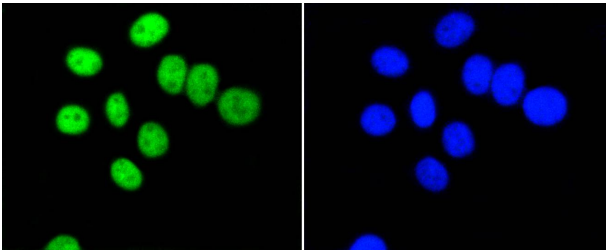
Immunohistochemical analysis of paraffin-embedded human spleen tissue using anti-PIM1 antibody. Counter stained with hematoxylin.



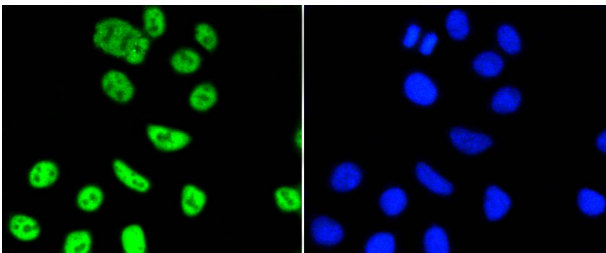
Immunohistochemical analysis of paraffin-embedded human breast carcinoma tissue using anti-PIM1 antibody. Counter stained with hematoxylin.



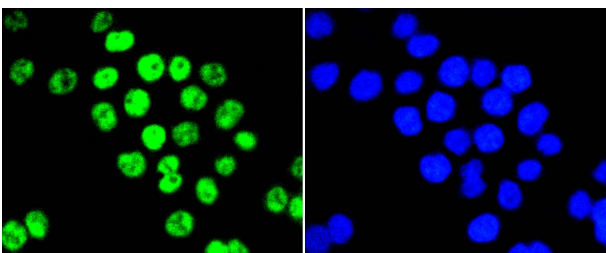
Immunohistochemical analysis of paraffin-embedded human gastric carcinoma tissue using anti-PIM1 antibody. Counter stained with hematoxylin.



ICC staining PIM1 in BT-20 cells (green). The nuclear counter stain is DAPI (blue). Cells were fixed in paraformaldehyde, permeabilised with 0.25% Triton X100/PBS.



ICC staining PIM1 in HepG2 cells (green). The nuclear counter stain is DAPI (blue). Cells were fixed in paraformaldehyde, permeabilised with 0.25% Triton X100/PBS.



ICC staining PIM1 in SW480 cells (green). The nuclear counter stain is DAPI (blue). Cells were fixed in paraformaldehyde, permeabilised with 0.25% Triton X100/PBS.

## Background

Pim-1 is a serine/threonine kinase that cooperates with c-Myc in lymphoid cell transformation. The expression of pim-1 increases during the progression from early to late G1, remaining high at the G1/S boundary and G2 phases of the cell cycle. Pim-1 is regulated at both the transcriptional and translational level, and it has been shown to be induced by IL-2 stimulation. Pim-1 also plays a role in T cell differentiation, and it has been shown to stimulate c-Myc-mediated apoptosis upstream of caspase-3-like proteases.

## References

---

Note: This product is for in vitro research use only