

## Src Rabbit mAb

Catalog No: #48902



Package Size: #48902-1 50ul #48902-2 100ul

Orders: order@signalwayantibody.com

Support: tech@signalwayantibody.com

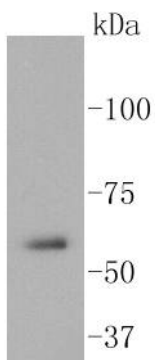
## Description

Product Name	Src Rabbit mAb
Host Species	Recombinant Rabbit
Clonality	Monoclonal antibody
Clone No.	ST05-03
Purification	ProA affinity purified
Applications	WB, ICC/IF, IHC
Species Reactivity	Hu, Rt
Immunogen Description	recombinant protein
Other Names	ASV antibody Avian sarcoma virus antibody c SRC antibody CDNA FLJ14219 fis clone NT2RP3003800 highly similar to Rattus norvegicus tyrosine protein kinase pp60 c src mRNA antibody cSrc antibody EC 2.7.10.2 antibody Neuronal CSRC tyrosine specific protein kinase antibody Neuronal SRC antibody Oncogene SRC antibody OTTHUMP00000174476 antibody OTTHUMP00000174477 antibody p60 Src antibody p60-Src antibody p60Src antibody pp60c src antibody pp60c-src antibody pp60csrc antibody Proto oncogene tyrosine protein kinase Src antibody Proto-oncogene c-Src antibody Proto-oncogene tyrosine-protein kinase Src antibody Protooncogene SRC antibody Protooncogene SRC Rous sarcoma antibody Src antibody SRC Oncogene antibody SRC proto oncogene non receptor tyrosine kinase antibody SRC_HUMAN antibody SRC1 antibody Tyrosine kinase pp60c src antibody Tyrosine protein kinase SRC 1 antibody Tyrosine protein kinase SRC1 antibody v src avian sarcoma (Schmidt Rupp A2) viral oncogene homolog antibody V src sarcoma (Schmidt Rupp A 2) viral oncogene homolog (avian) antibody v src sarcoma (Schmidt Rupp A 2) viral oncogene homolog avian antibody
Accession No.	Swiss-Prot#:P12931
Uniprot	P12931
GeneID	6714;
Calculated MW	60 kDa
Formulation	1*TBS (pH7.4), 1%BSA, 40%Glycerol. Preservative: 0.05% Sodium Azide.
Storage	Store at -20°C

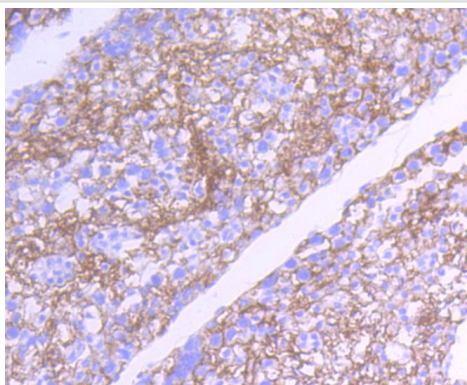
## Application Details

WB: 1:1,000 IHC: 1:50-1:200 ICC: 1:50-1:200

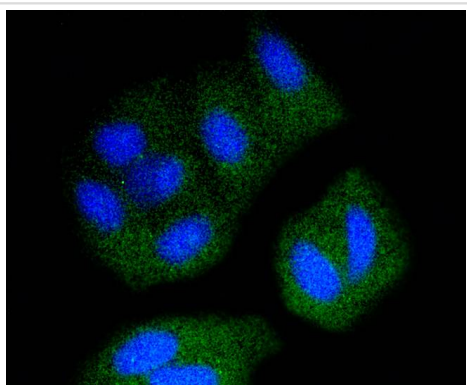
## Images



Western blot analysis of Src on A431 cell lysates using anti-Src antibody at 1/1,000 dilution.



Immunohistochemical analysis of paraffin-embedded rat testis tissue using anti-Src antibody. Counter stained with hematoxylin.



ICC staining Src in HeLa cells (green). The nuclear counter stain is DAPI (blue). Cells were fixed in paraformaldehyde, permeabilised with 0.25% Triton X100/PBS.

## Background

The major translational products of the Src gene family are membrane-associated tyrosine protein kinases that lack transmembrane and external amino acid sequences. By virtue of their common structural motifs, the Src family is composed of nine members in vertebrates, including c-Src, c-Yes, Fgr, Yrk, Fyn, Lyn, Hck, Lck and Blk. Src family kinases, which contain an amino-terminal cell membrane anchor followed by SH3 and SH2 domains, transduce signals that are involved in the control of a variety of cellular processes, including proliferation, differentiation, motility and adhesion. Src family members are normally maintained in an inactive state and can be activated transiently during cellular events such as mitosis. Different subcellular locations of Src family kinases may be important for the regulation of specific cellular processes, such as mitogenesis, cytoskeletal organization and membrane trafficking. c-Src (also designated pp60Src, Src p60 and proto-oncogene tyrosine protein kinase Src) is expressed in a broad range of tissue and cell types, although the highest levels of c-Src are detected in neuronal tissues and platelets. c-Src may play a role in events associated with both neuronal differentiation and maintenance of mature neuronal cell functions.

## References

Note: This product is for in vitro research use only