

alpha 1 Catenin Rabbit mAb

Catalog No: #48960



Package Size: #48960-1 50ul #48960-2 100ul

Orders: [order@signalwayantibody.com](mailto:order@signalwayantibody.com)  
Support: [tech@signalwayantibody.com](mailto:tech@signalwayantibody.com)

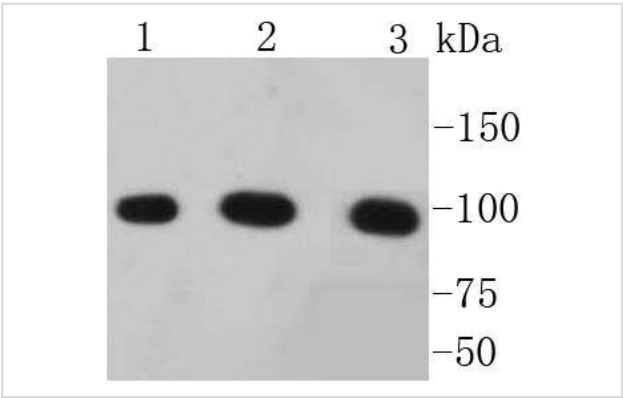
Description

Product Name	alpha 1 Catenin Rabbit mAb
Host Species	Recombinant Rabbit
Clonality	Monoclonal antibody
Clone No.	SC0619
Purification	ProA affinity purified
Applications	WB, ICC/IF, IHC, IP, FC
Species Reactivity	Hu, Ms, Rt
Immunogen Description	recombinant protein
Other Names	Alpha E-catenin antibody Cadherin associated protein 102kDa antibody Cadherin associated protein antibody Cadherin-associated protein antibody CAP 102 antibody CAP102 antibody Catenin (cadherin associated protein) alpha 1 102kDa antibody Catenin (cadherin associated protein), alpha 1, 102kDa antibody Catenin alpha 1 antibody Catenin alpha-1 antibody CTNA1_HUMAN antibody CTNNA 1 antibody Ctnna1 antibody FLJ36832 antibody FLJ52416 antibody NY REN 13 antigen antibody OTTHUMP00000224141 antibody OTTHUMP00000224147 antibody Renal carcinoma antigen NY REN 13 antibody Renal carcinoma antigen NY-REN-13 antibody
Accession No.	Swiss-Prot#:P35221
Uniprot	P35221
GeneID	1495;
Calculated MW	100 kDa
Formulation	1*TBS (pH7.4), 1%BSA, 40%Glycerol. Preservative: 0.05% Sodium Azide.
Storage	Store at -20°C

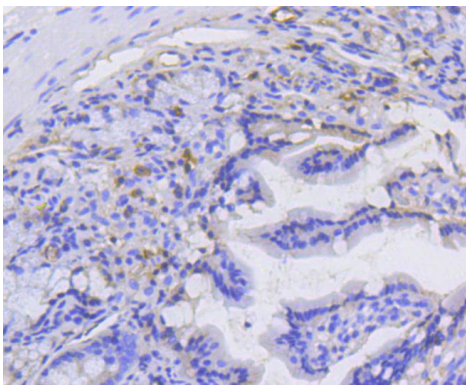
Application Details

WB: 1:1,000-1:2,000 IHC: 1:50-1:200 ICC: 1:50-1:200FC: 1:50-1:100

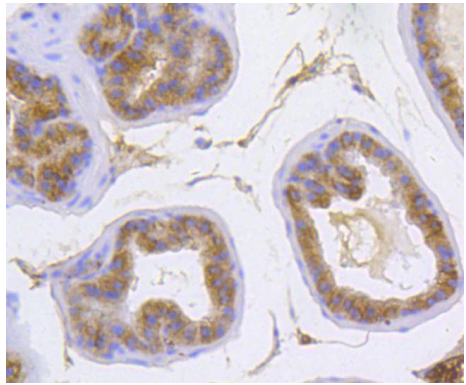
Images



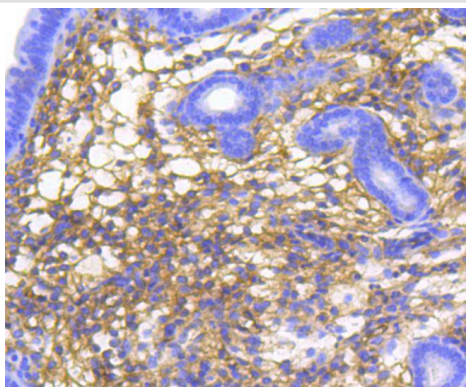
Western blot analysis of alpha 1 Catenin on different lysates using anti-alpha 1 Catenin antibody at 1/1,000 dilution.  
Positive control: Lane 1: Hela Lane 2: HepG2 Lane 3: A431



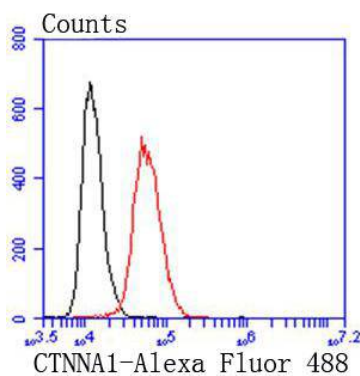
Immunohistochemical analysis of paraffin-embedded mouse colon tissue using anti-alpha 1 Catenin antibody. Counter stained with hematoxylin.



Immunohistochemical analysis of paraffin-embedded mouse prostate tissue using anti-alpha 1 Catenin antibody. Counter stained with hematoxylin.



Immunohistochemical analysis of paraffin-embedded mouse uterus tissue using anti-alpha 1 Catenin antibody. Counter stained with hematoxylin.



Flow cytometric analysis of Hela cells with alpha 1 Catenin antibody at 1/50 dilution (red) compared with an unlabelled control (cells without incubation with primary antibody; black). Alexa Fluor 488-conjugated goat anti rabbit IgG was used as the secondary antibody.

## Background

$\alpha$  E-catenin (also designated  $\alpha$ -catenin; cadherin-associated protein,  $\alpha 1$ , 102 kDa; and CAP102) plays a role in E-cadherin mediated cell-cell adhesion by linking E-cadherin to the cytoskeleton via  $\beta$ - or  $\gamma$ -catenin and Actin.  $\alpha$  E-catenin connects cell-density-dependent adherens junctions with the developmental hedgehog pathway and may provide a negative feedback loop controlling the size of developing cerebral cortex. It is abundant in neuroepithelial precursor cells in the developing cortical ventricular zone of the brain, with reduced expression in the cortical plate.  $\alpha$  E-catenin-vinculin interactions play a role in the assembly of the apical junction complex in epithelia. Catenins generally are thought to work as connectors that anchor E-cadherin to the cytoskeletal Actin bundle through the cadherin cytoplasmic domain. Dysfunction of this adhesion complex causes dissociation of cancer cells from primary tumor nodules, thus possibly contributing to cancer invasion and metastasis.

## References

---

---

Note: This product is for in vitro research use only