

PP2A alpha + beta Rabbit mAb

Catalog No: #49068



Package Size: #49068-1 50ul #49068-2 100ul

Orders: [order@signalwayantibody.com](mailto:order@signalwayantibody.com)  
Support: [tech@signalwayantibody.com](mailto:tech@signalwayantibody.com)

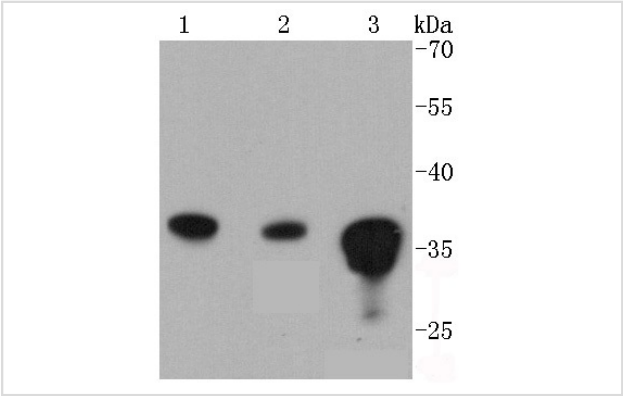
Description

Product Name	PP2A alpha + beta Rabbit mAb
Host Species	Recombinant Rabbit
Clonality	Monoclonal antibody
Clone No.	SN70-08
Purification	ProA affinity purified
Applications	WB, ICC, IHC, IP
Species Reactivity	Hu, Ms, Rt, zebrafish
Immunogen Description	recombinant protein
Other Names	PP2A A antibody PP2A alpha antibody PP2A B antibody PP2A beta antibody PP2A-alpha antibody PP2AA_HUMAN antibody PP2Ac antibody PP2CB antibody PPP2CA antibody PPP2CB antibody Protein phosphatase 2 catalytic subunit alpha isoform antibody Protein phosphatase 2 catalytic subunit beta isoform antibody Replication protein C antibody RP C antibody RP-C antibody Serine/threonine protein phosphatase 2A catalytic subunit alpha isoform antibody Serine/threonine protein phosphatase 2A catalytic subunit beta isoform antibody Serine/threonine-protein phosphatase 2A catalytic subunit alpha isoform antibody
Accession No.	Swiss-Prot#:P62714
Uniprot	P62714
GeneID	5516;
Calculated MW	36 kDa
Formulation	1*TBS (pH7.4), 1%BSA, 40%Glycerol. Preservative: 0.05% Sodium Azide.
Storage	Store at -20°C

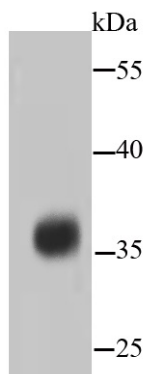
Application Details

WB: 1:1,000-1:2,000 IHC: 1:100-1:200ICC: 1:50-1:200

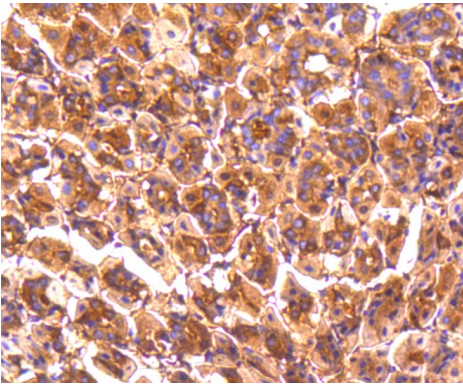
Images



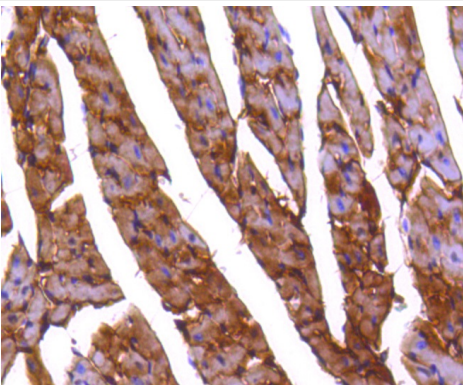
Western blot analysis of PP2A alpha + beta on different lysates using anti-PP2A alpha + beta antibody at 1/1,000 dilution. Positive control:  
Lane 1: A431  
Lane 2: NIH/3T3  
Lane 3: 293T



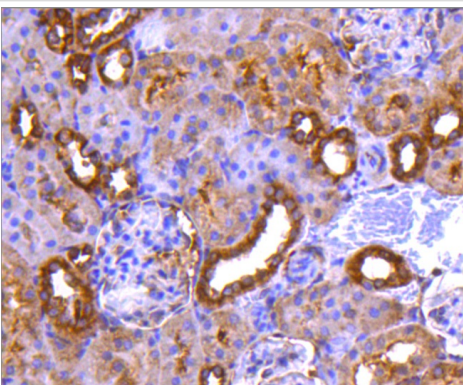
Western blot analysis of PP2A alpha + beta on hybrid fish (crucian-carp) brain tissue lysate using anti-PP2A alpha + beta antibody at 1/500 dilution.



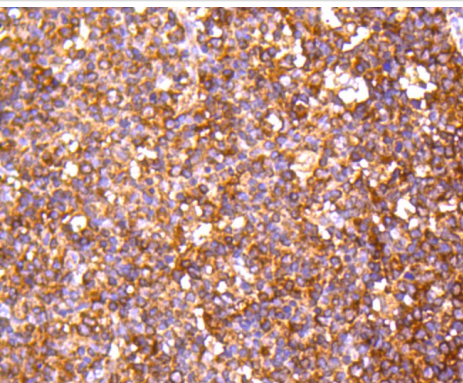
Immunohistochemical analysis of paraffin-embedded mouse stomach tissue using anti-PP2A alpha + beta antibody. Counter stained with hematoxylin.



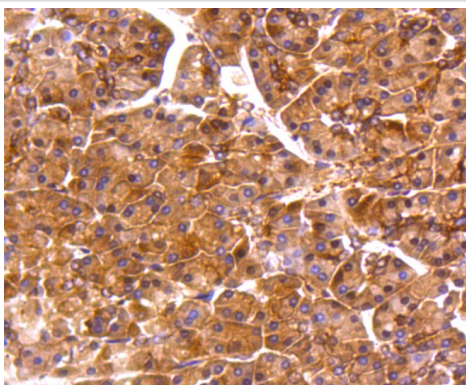
Immunohistochemical analysis of paraffin-embedded mouse heart tissue using anti-PP2A alpha + beta antibody. Counter stained with hematoxylin.



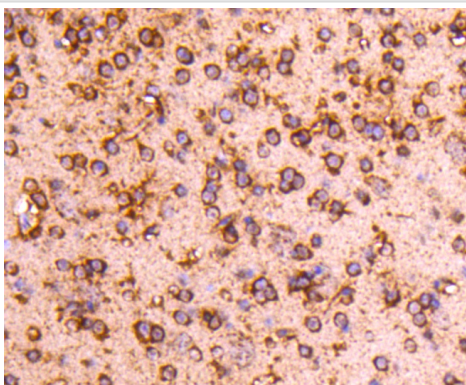
Immunohistochemical analysis of paraffin-embedded rat kidney tissue using anti-PP2A alpha + beta antibody. Counter stained with hematoxylin.



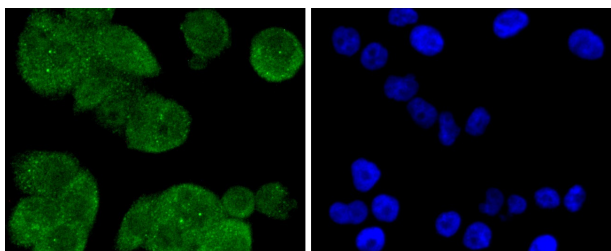
Immunohistochemical analysis of paraffin-embedded human tonsil tissue using anti-PP2A alpha + beta antibody. Counter stained with hematoxylin.



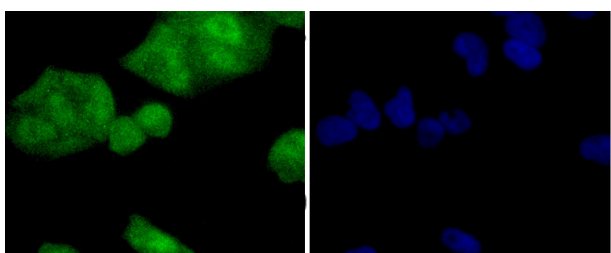
Immunohistochemical analysis of paraffin-embedded human pancreas tissue using anti-PP2A alpha + beta antibody. Counter stained with hematoxylin.



Immunohistochemical analysis of paraffin-embedded mouse brain tissue using anti-PP2A alpha + beta antibody. Counter stained with hematoxylin.



ICC staining PP2A alpha + beta in PANC-1 cells (green). The nuclear counter stain is DAPI (blue). Cells were fixed in paraformaldehyde, permeabilised with 0.25% Triton X100/PBS.



ICC staining PP2A alpha + beta in HeLa cells (green). The nuclear counter stain is DAPI (blue). Cells were fixed in paraformaldehyde, permeabilised with 0.25% Triton X100/PBS.

## Background

The catalytic subunit of protein phosphatase 2A (PP2A) is inactivated by in vitro phosphorylation of Tyr-307 by receptor and nonreceptor protein tyrosine kinases. The catalytic subunit of PP2A is phosphorylated by tyrosine-specific protein kinases and associates with a variety of regulatory subunits. Phosphorylation is enhanced in the presence of the phosphatase inhibitor okadaic acid, consistent with an autodephosphorylation reaction. Phosphorylation is catalyzed by p60v-src, p56lck, epidermal growth factor receptors, and insulin receptors. Transient deactivation of PP2A might enhance transmission of cellular signals through kinase cascades within cells. In eukaryotes, the phosphorylation and dephosphorylation of proteins on serine and threonine residues is an essential means of regulating a broad range of cellular functions, including cell division, homeostasis and apoptosis. A group of proteins that are intimately involved in this process are the protein phosphatases.

## References

---

Note: This product is for in vitro research use only