

Phospho-Tau(S396) Rabbit mAb

Catalog No: #13400



Package Size: #13400-1 50ul #13400-2 100ul

Orders: order@signalwayantibody.comSupport: tech@signalwayantibody.com

Description

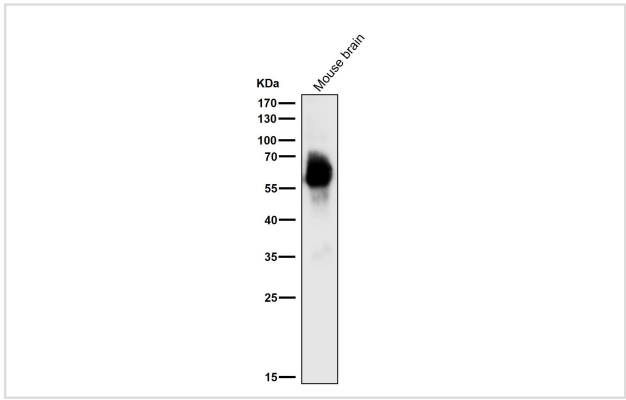
Product Name	Phospho-Tau(S396) Rabbit mAb
Clone No.	SN62-09
Purification	Affinity-chromatography
Applications	WB;IHC
Species Reactivity	Hu, Ms, Rt
Immunogen Description	A synthesized peptide derived from human Tau around the phosphorylation site of S396
Other Names	Al413597 antibody AW045860 antibody DDPAC antibody FLJ31424 antibody FTDP 17 antibody G protein beta1/gamma2 subunit interacting factor 1 antibody MAPT antibody MAPTL antibody MGC134287 antibody MGC138549 antibody MGC156663 antibody Microtubule associated protein tau antibody Microtubule associated protein tau isoform 4 antibody Microtubule-associated protein tau antibody MSTD antibody Mtap antibody MTBT1 antibody MTBT2 antibody Neurofibrillary tangle protein antibody Paired helical filament tau antibody Paired helical filament-tau antibody PHF tau antibody PHF-tau antibody PPND antibody PPP1R103 antibody Protein phosphatase 1, regulatory subunit 103 antibody pTau antibody RNPTAU antibody TAU antibody TAU_HUMAN antibody Tauopathy and respiratory failure, included antibody
Accession No.	Swiss-Prot#:P10636
Uniprot	P10636
GeneID	4137;
Calculated MW	79 kDa
SDS-PAGE MW	50-70 kDa
Formulation	Rabbit IgG in 10mM phosphate buffered saline , pH 7.4, 150mM sodium chloride, 0.05% BSA, 0.02% sodium azide and 50% glycerol.
Storage	Store at +4°C for short term. Store at -20°C for long term. Avoid freeze/thaw cycle.

Application Details

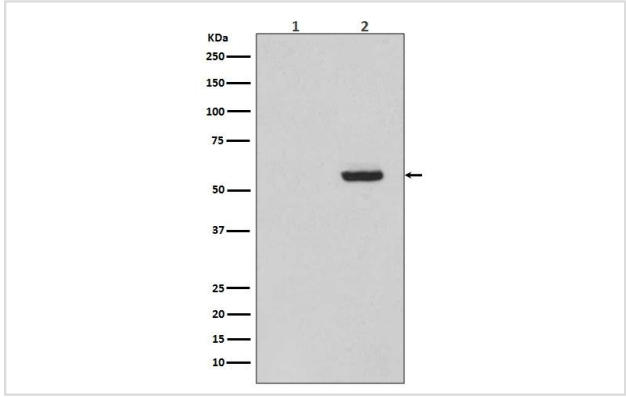
WB 1:1000-1:5000;

IHC 1:100-1:200;

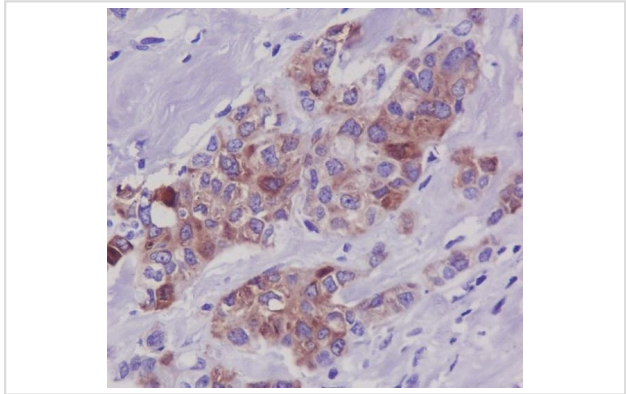
Images



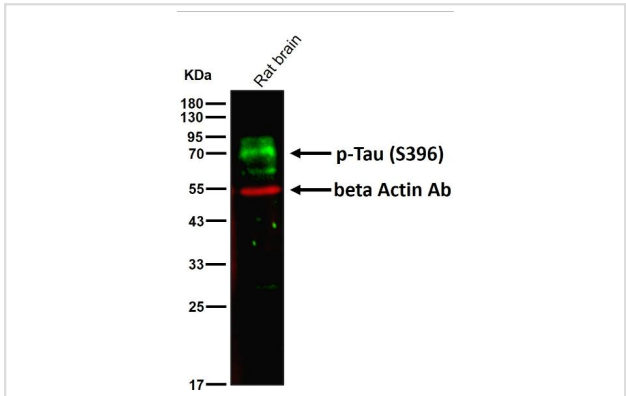
All lanes use the Antibody at 1:4K dilution for 1 hour at room temperature.



Western blot analysis of Phospho-Tau (S396) expression in (1) SH-SY5Y cell lysate treated with AP; (2) SH-SY5Y cell lysate.



Immunohistochemical analysis of paraffin-embedded human breast carcinoma, using Phospho-Tau (S396) Antibody.



All lanes use the Antibody at 1:400 dilution for 1 hour at room temperature.

Background

Promotes microtubule assembly and stability, and might be involved in the establishment and maintenance of neuronal polarity. The C-terminus binds axonal microtubules while the N-terminus binds neural plasma membrane components, suggesting that tau functions as a linker protein between both.

Note: This product is for in vitro research use only