

MEK3 Rabbit mAb

Catalog No: #49128

Package Size: #49128-1 50ul #49128-2 100ul

Orders: order@signalwayantibody.comSupport: tech@signalwayantibody.com

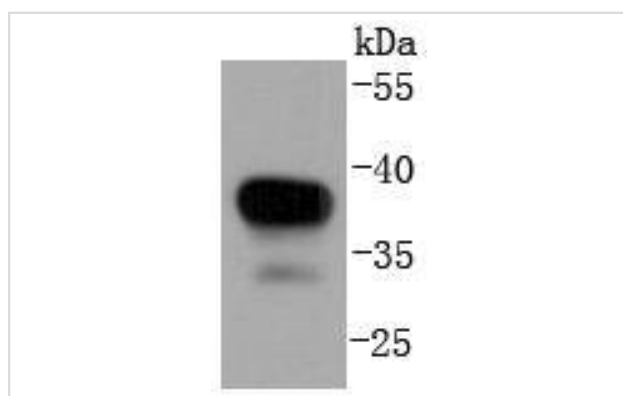
Description

Product Name	MEK3 Rabbit mAb
Host Species	Recombinant Rabbit
Clonality	Monoclonal antibody
Clone No.	SD20-93
Purification	ProA affinity purified
Applications	WB, ICC/IF, IHC, IP, FC
Species Reactivity	Hu, Ms, Rt
Immunogen Description	recombinant protein
Other Names	AW212142 antibody dual specificity mitogen activated protein kinase kinase 3 antibody Dual specificity mitogen-activated protein kinase kinase 3 antibody MAP kinase kinase 3 antibody map2k3 antibody MAPK ERK kinase 3 antibody MAPK/ERK kinase 3 antibody MAPKK 3 antibody MAPKK3 antibody MEK 3 antibody MEK3 antibody Mitogen activated protein kinase kinase 3 antibody MKK 3 antibody MKK3 antibody mMKK3b antibody MP2K3_HUMAN antibody PRKMK 3 antibody PRKMK3 antibody protein kinase, mitogen-activated, kinase 3 antibody SAPK kinase 2 antibody SAPKK 2 antibody SAPKK2 antibody Stress activated protein kinase kinase 2 antibody
Accession No.	Swiss-Prot#:P46734
Uniprot	P46734
GeneID	5606;
Calculated MW	39 kDa
Formulation	1*TBS (pH7.4), 1%BSA, 40%Glycerol. Preservative: 0.05% Sodium Azide.
Storage	Store at -20°C

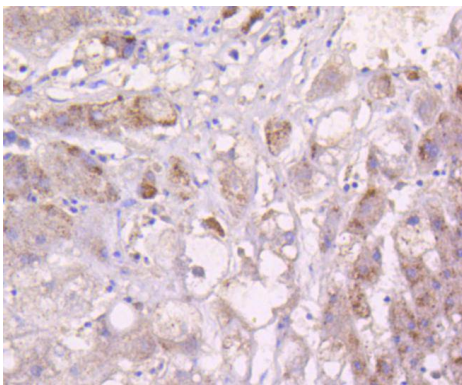
Application Details

WB: 1:1,000-5,000IHC: 1:50-1:200 ICC: 1:50-1:200FC: 1:50-1:100

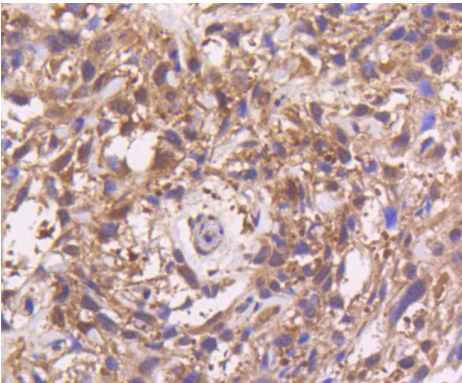
Images



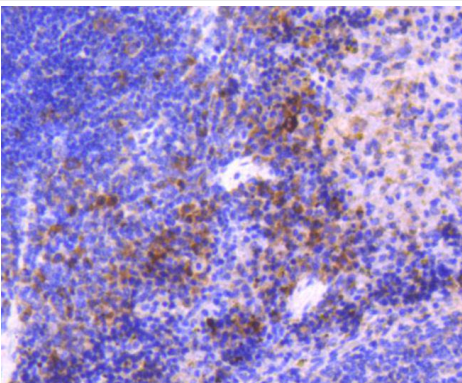
Western blot analysis of MEK3 on Hela lysates using anti-MEK3 antibody at 1/1,000 dilution.



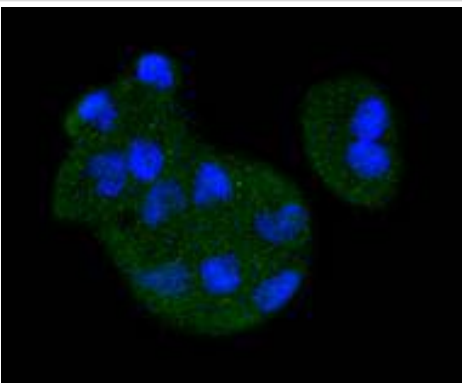
Immunohistochemical analysis of paraffin-embedded human liver tissue using anti-MEK3 antibody. Counter stained with hematoxylin.



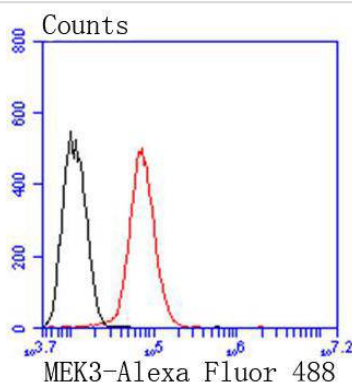
Immunohistochemical analysis of paraffin-embedded human breast carcinoma tissue using anti-MEK3 antibody. Counter stained with hematoxylin.



Immunohistochemical analysis of paraffin-embedded mouse spleen tissue using anti-MEK3 antibody. Counter stained with hematoxylin.



ICC staining MEK3 in HeLa cells (green). The nuclear counter stain is DAPI (blue). Cells were fixed in paraformaldehyde, permeabilised with 0.25% Triton X100/PBS.



Flow cytometric analysis of HeLa cells with MEK3 antibody at 1/50 dilution (red) compared with an unlabelled control (cells without incubation with primary antibody; black). Alexa Fluor 488-conjugated goat anti rabbit IgG was used as the secondary antibody

Background

A family of protein kinases located upstream of the MAP kinases and responsible for their activation has been identified. The prototype member of this family, designated MAP kinase kinase, or MEK-1, specifically phosphorylates the MAP kinase regulatory threonine and tyrosine residues present in the Thr-Glu-Tyr motif of ERK. A second MEK family member, MEK-2, resembles MEK-1 in its substrate specificity. MEK-3 (or MKK-3) functions to activate p38 MAP kinase, and MEK-4 (also called SEK1 or MKK-4) activates both p38 and JNK MAP kinases. MEK-5 appears to specifically phosphorylate ERK5, whereas MEK-6 phosphorylates p38 and p38b. MEK-7 (or MKK-7) phosphorylates and activates the JNK signal transduction pathway.

References

Note: This product is for in vitro research use only