

## Phospho-Cyclin E1(T77) Rabbit mAb

Catalog No: #13405

Package Size: #13405-1 50ul #13405-2 100ul

Orders: [order@signalwayantibody.com](mailto:order@signalwayantibody.com)Support: [tech@signalwayantibody.com](mailto:tech@signalwayantibody.com)

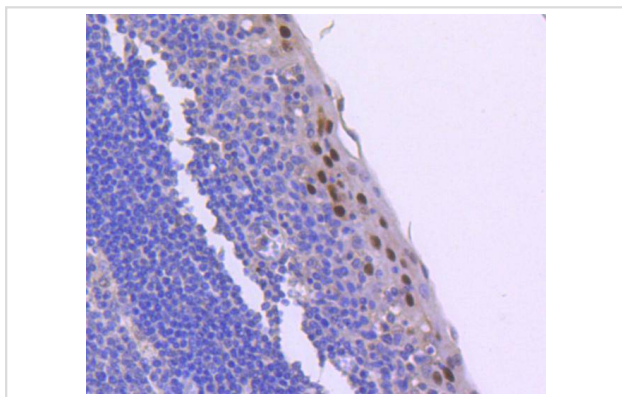
## Description

|                       |  |
|-----------------------|--|
| Product Name          | Phospho-Cyclin E1(T77) Rabbit mAb  |
| Host Species          | Rabbit   |
| Clonality             | Monoclonal   |
| Clone No.             | SD2025   |
| Purification          | ProA affinity purified   |
| Applications          | WB, ICC/IF, IHC  |
| Species Reactivity    | Hu   |
| Immunogen Description | Synthetic phospho-peptide corresponding to residues surrounding Thr77 of human Cyclin E1.  |
| Other Names           | CCNE antibody Ccne1 antibody CCNE1_HUMAN antibody cyclin E variant ex5del antibody cyclin E variant ex7del antibody Cyclin E1 antibody Cyclin Es antibody Cyclin Et antibody CyclinE antibody G1/S specific cyclin E antibody G1/S-specific cyclin-E1 antibody |
| Accession No.         | Swiss-Prot#:P24864   |
| Uniprot               | P24864   |
| GeneID                | 898;   |
| Calculated MW         | 48 kDa   |
| Formulation           | 1*TBS (pH7.4), 1%BSA, 40%Glycerol. Preservative: 0.05% Sodium Azide.   |
| Storage               | Store at -20°C   |

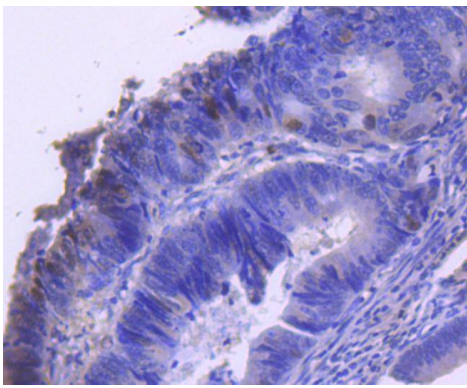
## Application Details

WB: 1:1,000 IHC: 1:50-1:200ICC: 1:50-1:200

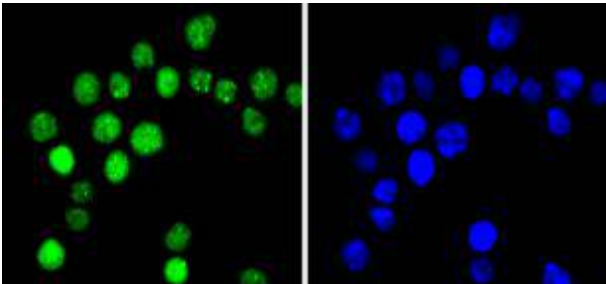
## Images



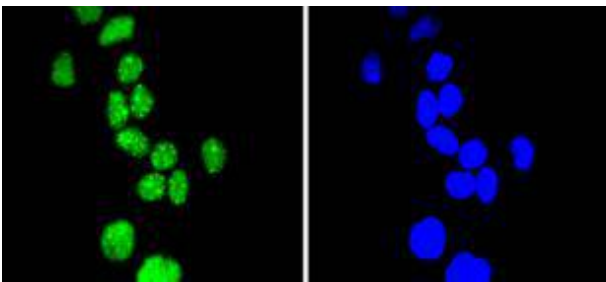
Immunohistochemical analysis of paraffin-embedded human tonsil tissue using anti-Phospho-Cyclin E1(T77) antibody. Counter stained with hematoxylin.



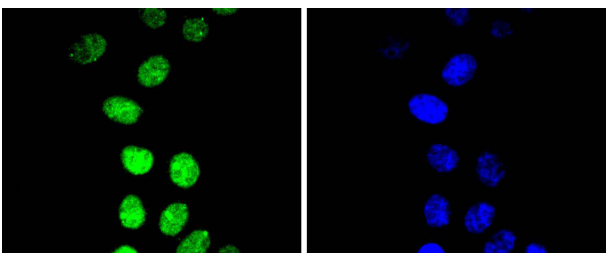
Immunohistochemical analysis of paraffin-embedded human colon cancer tissue using anti-Phospho-Cyclin E1(T77) antibody. Counter stained with hematoxylin.



ICC staining Phospho-Cyclin E1(T77) in SW480 cells (green). The nuclear counter stain is DAPI (blue). Cells were fixed in paraformaldehyde, permeabilised with 0.25% Triton X100/PBS.



ICC staining Phospho-Cyclin E1(T77) in HeLa cells (green). The nuclear counter stain is DAPI (blue). Cells were fixed in paraformaldehyde, permeabilised with 0.25% Triton X100/PBS.



ICC staining Phospho-Cyclin E1(T77) in HepG2 cells (green). The nuclear counter stain is DAPI (blue). Cells were fixed in paraformaldehyde, permeabilised with 0.25% Triton X100/PBS.

## Background

Cyclins were first identified in invertebrates as proteins that oscillate dramatically through the cell cycle. These proteins have been well conserved through evolution and play a critical role in regulation of cell division. cyclin E, along with the three cyclin D proteins and cyclin C, has been shown to represent a putative G1 cyclin on the basis of its cyclic pattern of mRNA expression, with maximal levels being detected near the G1/S boundary. cyclin E has been found to be associated with the transcription factor E2F in a temporally regulated manner. The cyclin E/E2F complex is detected primarily during the G1 phase of the cell cycle and decreases as cells enter S phase. E2F is known to be a critical transcription factor for expression of several S phase specific proteins.

## References

---

Note: This product is for in vitro research use only