

## Tau Rabbit mAb

Catalog No: #49155



Package Size: #49155-1 50ul #49155-2 100ul

Orders: [order@signalwayantibody.com](mailto:order@signalwayantibody.com)Support: [tech@signalwayantibody.com](mailto:tech@signalwayantibody.com)

## Description

Product Name	Tau Rabbit mAb
Host Species	Recombinant Rabbit
Clonality	Monoclonal antibody
Clone No.	SD205-09
Purification	ProA affinity purified
Applications	WB, ICC/IF, FC
Species Reactivity	Hu, Ms, Rt
Immunogen Description	recombinant protein
Other Names	AI413597 antibody AW045860 antibody DDPAC antibody FLJ31424 antibody FTDP 17 antibody G protein beta1/gamma2 subunit interacting factor 1 antibody MAPT antibody MAPTL antibody MGC134287 antibody MGC138549 antibody MGC156663 antibody Microtubule associated protein tau antibody Microtubule associated protein tau isoform 4 antibody Microtubule-associated protein tau antibody MSTD antibody Mtapt antibody MTBT1 antibody MTBT2 antibody Neurofibrillary tangle protein antibody Paired helical filament tau antibody Paired helical filament-tau antibody PHF tau antibody PHF-tau antibody PPND antibody PPP1R103 antibody Protein phosphatase 1, regulatory subunit 103 antibody pTau antibody RNPTAU antibody TAU antibody TAU_HUMAN antibody Tauopathy and respiratory failure, included antibody
Accession No.	Swiss-Prot#:P10636
Uniprot	P10636
GeneID	4137;
Calculated MW	79 kDa
Formulation	1*TBS (pH7.4), 1%BSA, 40%Glycerol. Preservative: 0.05% Sodium Azide.
Storage	Store at -20°C

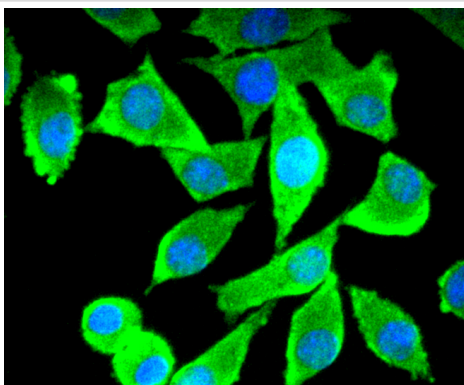
## Application Details

WB: 1:1,000

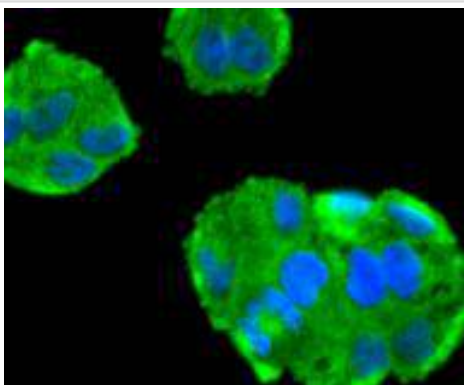
ICC: 1:100-1:500

FC: 1:50-1:100

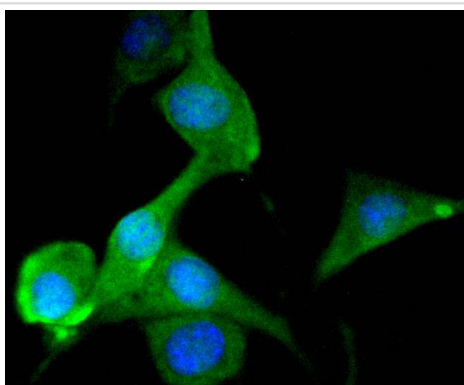
## Images



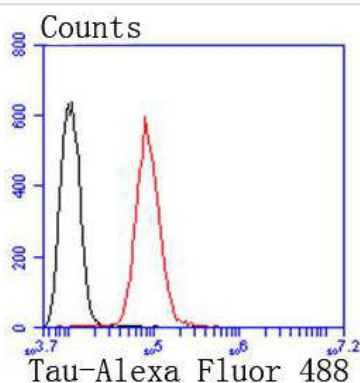
ICC staining Tau in SH-SY-5Y cells (green). The nuclear counter stain is DAPI (blue). Cells were fixed in paraformaldehyde, permeabilised with 0.25% Triton X100/PBS.



ICC staining Tau in HeLa cells (green). The nuclear counter stain is DAPI (blue). Cells were fixed in paraformaldehyde, permeabilised with 0.25% Triton X100/PBS.



ICC staining Tau in SHG-44 cells (green). The nuclear counter stain is DAPI (blue). Cells were fixed in paraformaldehyde, permeabilised with 0.25% Triton X100/PBS.



Flow cytometric analysis of SH-SY-5Y cells with Tau antibody at 1/50 dilution (red) compared with an unlabelled control (cells without incubation with primary antibody; black). Alexa Fluor 488-conjugated goat anti rabbit IgG was used as the secondary antibody

## Background

Tau, also known as MAPT (microtubule-associated protein tau), MAPTL, MTBT1 or TAU, is a 758 amino acid protein that localizes to the cytoplasm, as well as to the cytoskeleton and the cell membrane, and contains four Tau/MAP repeats. Expressed in neuronal tissue and existing as multiple alternatively spliced isoforms, Tau functions to promote microtubule assembly and stability and is thought to be involved in the maintenance of neuronal polarity. Tau may also link microtubules with neural plasma membrane components and, addition to its role in microtubule stability, is also necessary for cytoskeletal plasticity. Tau is highly subject to a variety of post-translational modifications, including phosphorylation on serine and threonine residues, polyubiquitination (and subsequent proteasomal degradation) and glycation of specific Tau isoforms. Defects in the gene encoding Tau are associated with Alzheimers disease, pallido-ponto-nigral degeneration (PPND), corticobasal degeneration (CBD) and progressive

supranuclear palsy (PSP).

## References

---

---

Note: This product is for in vitro research use only