

NSMCE1 antibody

Catalog No: #22675

Orders: order@signalwayantibody.comSupport: tech@signalwayantibody.com

Description

Product Name	NSMCE1 antibody
Host Species	Rabbit
Clonality	Polyclonal
Purification	Purified by antigen-affinity chromatography.
Applications	WB IHC
Species Reactivity	Hu
Immunogen Type	Recombinant protein
Immunogen Description	Recombinant protein fragment contain a sequence corresponding to a region within amino acids 1 and 257 of NSMCE1
Target Name	NSMCE1
Accession No.	Swiss-Prot:Q8WV22Gene ID:197370
Uniprot	Q8WV22
GeneID	197370;
Concentration	1mg/ml
Formulation	Supplied in 0.1M Tris-buffered saline with 10% Glycerol (pH7.0). 0.01% Thimerosal was added as a preservative.
Storage	Store at -20°C for long term preservation (recommended). Store at 4°C for short term use.

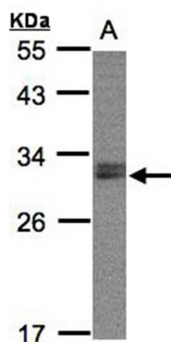
Application Details

Predicted MW: 31kd

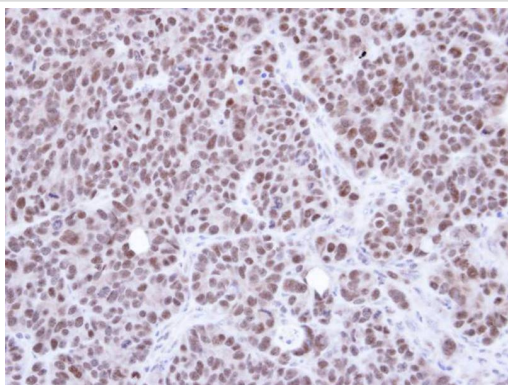
Western blotting: 1:500-1:3000

Immunohistochemistry: 1:100-1:500

Images



Sample(30 ug whole cell lysate)
A: Raji
12% SDS PAGE
Primary antibody diluted at 1: 2000



Immunohistochemical analysis of paraffin-embedded SW480 xenograft, using NSMCE1 antibody at 1: 500 dilution.

Note: This product is for in vitro research use only