

Cytokeratin 2e Rabbit mAb

Catalog No: #49220



Package Size: #49220-1 50ul #49220-2 100ul

Orders: order@signalwayantibody.com
Support: tech@signalwayantibody.com

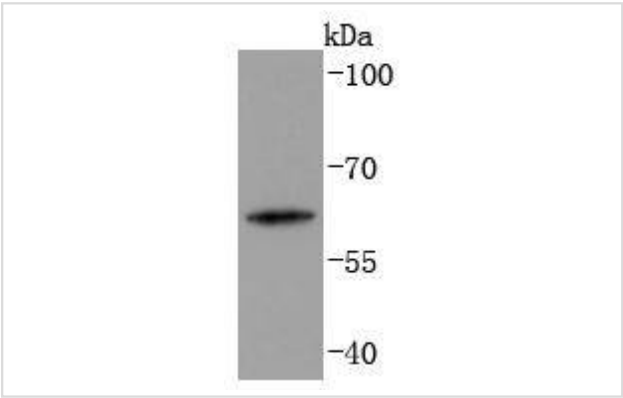
Description

Product Name	Cytokeratin 2e Rabbit mAb
Host Species	Recombinant Rabbit
Clonality	Monoclonal antibody
Clone No.	JJ201-8
Purification	ProA affinity purified
Applications	WB, IHC
Species Reactivity	Hu
Immunogen Description	recombinant protein
Other Names	CK 2e antibody Cytokeratin-2e antibody Epithelial keratin-2e antibody K2e antibody Keratin type II cytoskeletal 2 epidermal antibody Keratin-2 epidermis antibody KRT2 antibody KRT2A antibody KRT2E antibody Type-II keratin Kb2 antibody
Accession No.	Swiss-Prot#:P35908
Uniprot	P35908
GeneID	3849;
Calculated MW	65 kDa
Formulation	1*TBS (pH7.4), 1%BSA, 40%Glycerol. Preservative: 0.05% Sodium Azide.
Storage	Store at -20°C

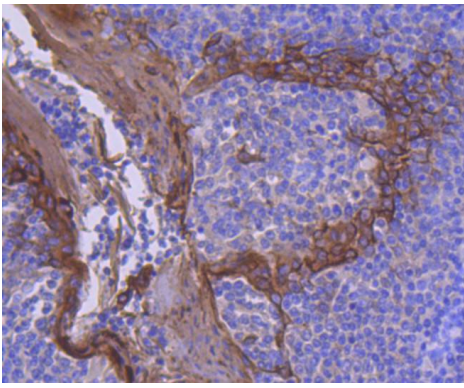
Application Details

WB: 1:1,000IHC: 1:50-1:200

Images



Western blot analysis of Cytokeratin 2e on human skin lysates using anti-Cytokeratin 2e antibody at 1/1,000 dilution.



Immunohistochemical analysis of paraffin-embedded human tonsil tissue using anti-Cytokeratin 2e antibody. Counter stained with hematoxylin.

Background

The keratin multigene family is made of "soft" epithelial cytokeratins and "hard" hair keratins. While the epithelial cytokeratins are involved in the layering and formation of epithelia, the hair keratins are responsible for creating nails and hair. There are two types of keratins: the acidic class I keratin proteins and the basic/neutral class II keratin proteins. Keratin 2 (KRT2), also known as Keratin type II cytoskeletal 2 epidermal, Keratin-2e (K2e), KRTE, Cytokeratin-2e (CK-2e), KRT2A or KRT2E, is a 639 amino acid class II epithelial Keratin protein belonging to the intermediate filament family. Encoded by a gene that maps to human chromosome 12q13.13, Keratin 2 functions in epidermal keratinocyte activation and proliferation, and plays a part in terminal cornification. Highly expressed in upper epithelial tissues, Keratin 2 forms heterotetramers with two class I Keratins and another class II Keratin. Defects in Keratin 2 have been linked to ichthyosis bullosa of Siemens (IBS), a rare autosomal dominant skin disorder.

References

Note: This product is for in vitro research use only