

Phospho-c-Jun(T91) Rabbit mAb

Catalog No: #13420



Package Size: #13420-1 50ul #13420-2 100ul

Orders: order@signalwayantibody.com
Support: tech@signalwayantibody.com

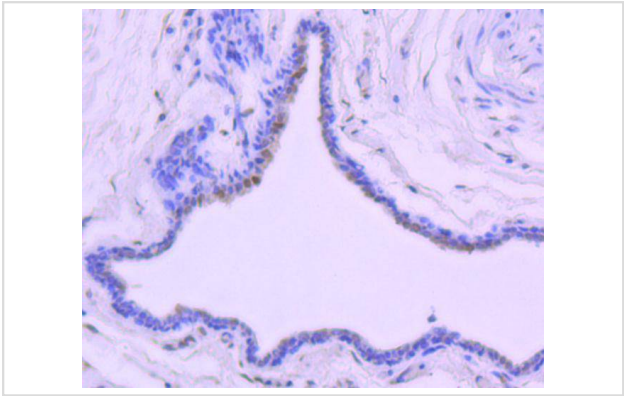
Description

Product Name	Phospho-c-Jun(T91) Rabbit mAb
Host Species	Rabbit
Clonality	Monoclonal
Clone No.	JJ080-9
Purification	ProA affinity purified
Applications	WB, ICC/IF, IHC, IP
Species Reactivity	Hu, Ms, Rt
Immunogen Description	Synthetic phospho-peptide corresponding to residues surrounding Thr91 of human c-Jun.
Other Names	Activator protein 1 antibody AP 1 antibody AP1 antibody cJun antibody Enhancer Binding Protein AP1 antibody Jun Activation Domain Binding Protein antibody JUN antibody Jun oncogene antibody JUN protein antibody Jun proto oncogene antibody JUN_HUMAN antibody JUNC antibody Oncogene JUN antibody p39 antibody Proto oncogene c jun antibody Proto oncogene cJun antibody Proto-oncogene c-jun antibody Transcription Factor AP 1 antibody Transcription factor AP-1 antibody Transcription Factor AP1 antibody V jun avian sarcoma virus 17 oncogene homolog antibody V jun sarcoma virus 17 oncogene homolog (avian) antibody V jun sarcoma virus 17 oncogene homolog antibody V-jun avian sarcoma virus 17 oncogene homolog antibody vJun Avian Sarcoma Virus 17 Oncogene Homolog antibody
Accession No.	Swiss-Prot#:P05412
Uniprot	P05412
GeneID	3725;
Calculated MW	36 kDa
Formulation	1*TBS (pH7.4), 1%BSA, 40%Glycerol. Preservative: 0.05% Sodium Azide.
Storage	Store at -20°C

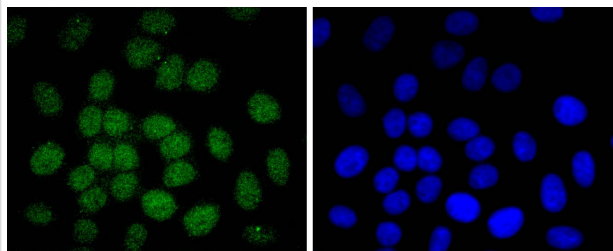
Application Details

WB: 1:500-1:1,000 IHC: 1:50-1:200 ICC: 1:50-1:200FC: 1:50-1:100

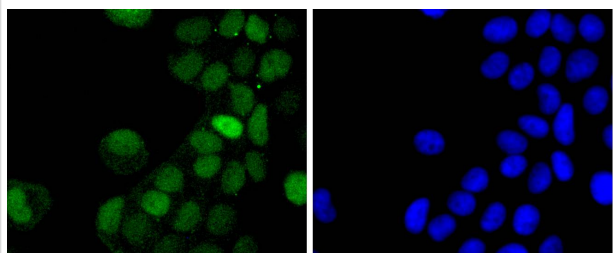
Images



Immunohistochemical analysis of paraffin-embedded human breast carcinoma tissue using anti-Phospho-c-Jun(T91) antibody. Counter stained with hematoxylin.



ICC staining Phospho-c-Jun(T91) in HepG2 cells (green). The nuclear counter stain is DAPI (blue). Cells were fixed in paraformaldehyde, permeabilised with 0.25% Triton X100/PBS.



ICC staining Phospho-c-Jun(T91) in MCF-7 cells (green). The nuclear counter stain is DAPI (blue). Cells were fixed in paraformaldehyde, permeabilised with 0.25% Triton X100/PBS.

Background

Genes belonging to the Jun and Fos oncogene families encode nuclear proteins that are associated with a number of transcriptional complexes. The c-Jun protein is a major component of the transcription factor AP-1, originally shown to mediate phorbol ester tumor promoter (TPA)-induced expression of responsive genes through the TPA-response element (TRE). The Jun proteins form homo- and heterodimers which bind the TRE, while Fos proteins are active only as heterodimers with any of the Jun proteins. Fos/Jun heterodimers have a much higher affinity for the TRE than Jun homodimers. Ha-Ras augments c-Jun activity and stimulates phosphorylation of its activation domain. An inhibitor of Fos/Jun function, termed IP-1, associates with Fos and Jun and is inactivated upon phosphorylation induced by the cAMP-dependent protein kinase A (PKA).

References

Note: This product is for in vitro research use only