

Phospho-AKT1(S124) Rabbit mAb

Catalog No: #13423

Package Size: #13423-1 50ul #13423-2 100ul

Orders: order@signalwayantibody.com

Support: tech@signalwayantibody.com

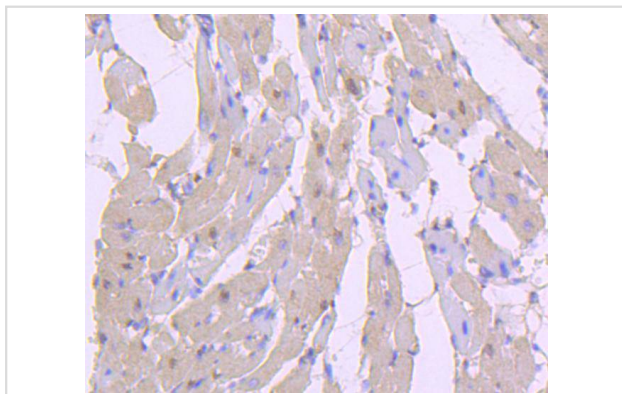
Description

Product Name	Phospho-AKT1(S124) Rabbit mAb
Host Species	Rabbit
Clonality	Monoclonal
Clone No.	JJ08-46
Purification	ProA affinity purified
Applications	WB, ICC/IF, IHC, IP
Species Reactivity	Hu, Ms, Rt
Immunogen Description	Synthetic phospho-peptide corresponding to residues surrounding Ser124 of human AKT1.
Other Names	AKT 1 antibody AKT antibody AKT1 antibody AKT1_HUMAN antibody MGC99656 antibody PKB antibody PKB-ALPHA antibody PRKBA antibody Protein Kinase B Alpha antibody Protein kinase B antibody Proto-oncogene c-Akt antibody RAC Alpha antibody RAC antibody RAC-alpha serine/threonine-protein kinase antibody RAC-PK-alpha antibody
Accession No.	Swiss-Prot#:P31749
Uniprot	P31749
GeneID	207;
Calculated MW	56 kDa
Formulation	1*TBS (pH7.4), 1%BSA, 40%Glycerol. Preservative: 0.05% Sodium Azide.
Storage	Store at -20°C

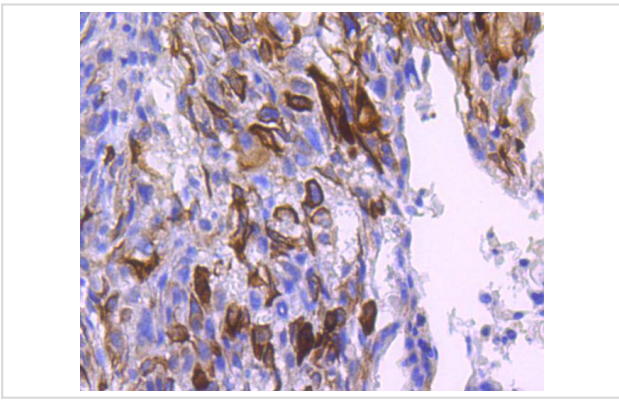
Application Details

WB: 1:1,000 IHC: 1:50-1:200 ICC: 1:50-1:200

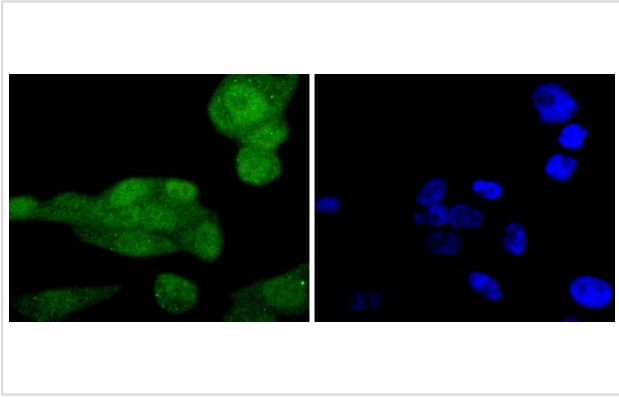
Images



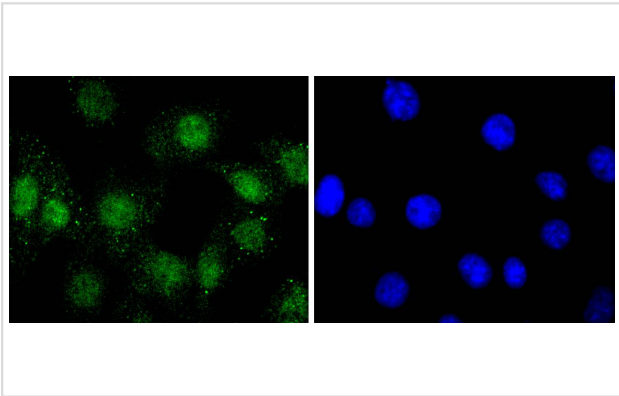
Immunohistochemical analysis of paraffin-embedded rat heart tissue using anti-Phospho-AKT1(S124) antibody. Counter stained with hematoxylin.



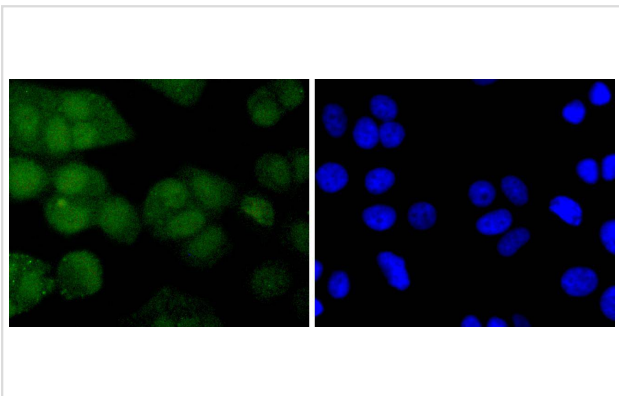
Immunohistochemical analysis of paraffin-embedded human breast carcinoma tissue using anti-Phospho-AKT1(S124) antibody. Counter stained with hematoxylin.



ICC staining Phospho-AKT1(S124) in PC-3M cells (green). The nuclear counter stain is DAPI (blue). Cells were fixed in paraformaldehyde, permeabilised with 0.25% Triton X100/PBS.



ICC staining Phospho-AKT1(S124) in NIH/3T3 cells (green). The nuclear counter stain is DAPI (blue). Cells were fixed in paraformaldehyde, permeabilised with 0.25% Triton X100/PBS.



ICC staining Phospho-AKT1(S124) in MCF-7 cells (green). The nuclear counter stain is DAPI (blue). Cells were fixed in paraformaldehyde, permeabilised with 0.25% Triton X100/PBS.

Background

The serine/threonine kinase Akt family contains several members, including Akt1 (also designated PKB or RacPK), Akt2 (also designated PKB β or RacPK- β) and Akt 3 (also designated PKB γ or thyoma viral proto-oncogene 3), which exhibit sequence homology with the protein kinase A and C families and are encoded by the c-Akt proto-oncogene. All members of the Akt family have a pleckstrin homology domain. Akt1 and Akt2 are activated by PDGF stimulation. Activation is dependent on PDGFR- β Tyr residues 740 and 751, which bind the subunit of the phosphatidylinositol 3-kinase (PI 3-kinase) complex. Activation of Akt1 by Insulin or Insulin-growth factor-1(IGF-1) results in phosphorylation of both Thr 308 and Ser 473. Phosphorylation of both residues is important to generate a high level of Akt1 activity. The phosphorylation of Thr 308 is not dependent on phosphorylation of Ser 473 *in vivo*. Thus, Akt proteins become phosphorylated and activated in Insulin/IGF-1-stimulated cells by an upstream

kinase(s). The activation of Akt1 and Akt2 is inhibited by the PI kinase inhibitor wortmannin, suggesting that the protein signals downstream of the PI kinases.

References

Note: This product is for in vitro research use only