

## ARID1A Rabbit mAb

Catalog No: #49272

Package Size: #49272-1 50ul #49272-2 100ul

Orders: order@signalwayantibody.com

Support: tech@signalwayantibody.com

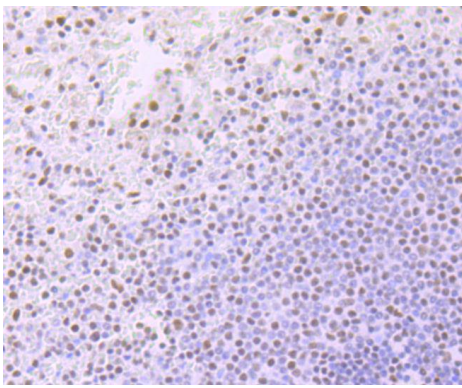
## Description

|                       |  |
|-----------------------|--|
| Product Name          | ARID1A Rabbit mAb  |
| Host Species          | Recombinant Rabbit   |
| Clonality             | Monoclonal antibody  |
| Clone No.             | JJ09-01  |
| Purification          | ProA affinity purified   |
| Applications          | ICC/IF, IHC  |
| Species Reactivity    | Hu, Ms, Rt   |
| Immunogen Description | recombinant protein  |
| Other Names           | actin-dependent regulator of chromatin subfamily F member 1 antibody ARI1A_HUMAN antibody ARID domain containing protein 1A antibody ARID domain-containing protein 1A antibody ARID1A antibody AT rich interactive domain 1A (SWI like) antibody AT rich interactive domain 1A antibody AT rich interactive domain containing protein 1A antibody AT-rich interactive domain-containing protein 1A antibody B120 antibody BAF250 antibody BAF250A antibody BM029 antibody brain protein 120 antibody BRG1 associated factor 250 antibody BRG1 associated factor 250a antibody BRG1-associated factor 250 antibody BRG1-associated factor 250a antibody C1ORF4 antibody chromatin remodeling factor p250 antibody chromosome 1 open reading frame 4 antibody ELD antibody hELD antibody hOSA1 antibody matrix-associated antibody MRD14 antibody Osa homolog 1 antibody OSA1 antibody OSA1 nuclear protein antibody P270 antibody SMARCF1 antibody SWI like protein antibody SWI SNF complex protein p270 antibody SWI-like protein antibody SWI/SNF complex protein p270 antibody SWI/SNF related, matrix associated, actin dependent regulator of chromatin, subfamily f, member 1 antibody SWI/SNF-related antibody |
| Accession No.         | Swiss-Prot#:O14497   |
| Uniprot               | O14497   |
| GeneID                | 8289;  |
| Formulation           | 1*TBS (pH7.4), 1%BSA, 40%Glycerol. Preservative: 0.05% Sodium Azide.   |
| Storage               | Store at -20°C   |

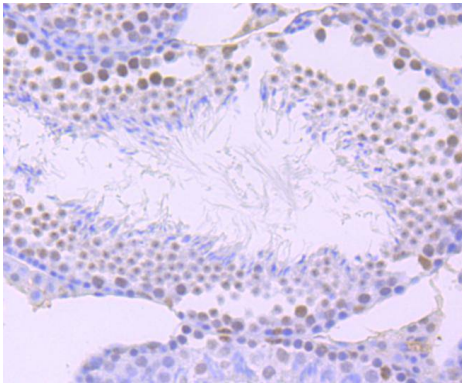
## Application Details

IHC: 1:50-1:200 ICC: 1:50-1:200

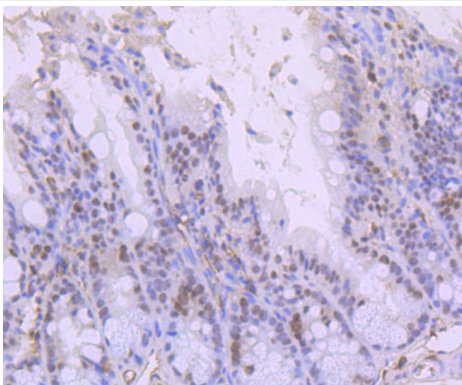
## Images



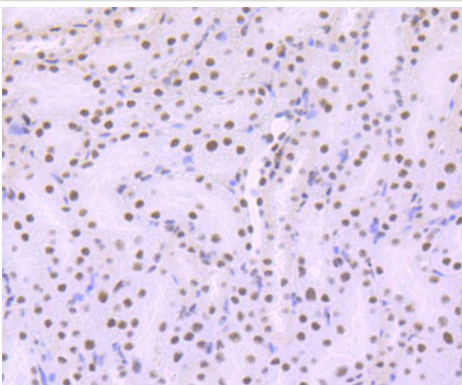
Immunohistochemical analysis of paraffin-embedded human spleen tissue using anti-ARID1A antibody. Counter stained with hematoxylin.



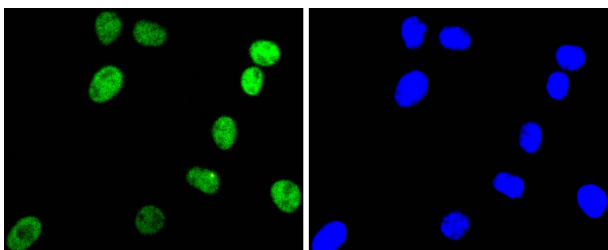
Immunohistochemical analysis of paraffin-embedded mouse testis tissue using anti-ARID1A antibody. Counter stained with hematoxylin.



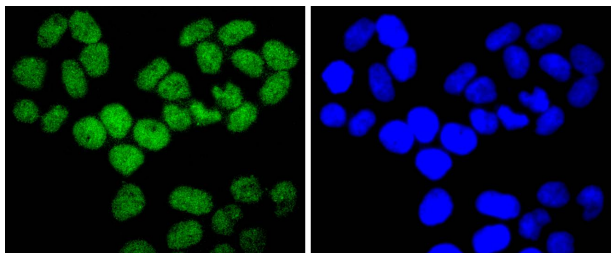
Immunohistochemical analysis of paraffin-embedded mouse colon tissue using anti-ARID1A antibody. Counter stained with hematoxylin.



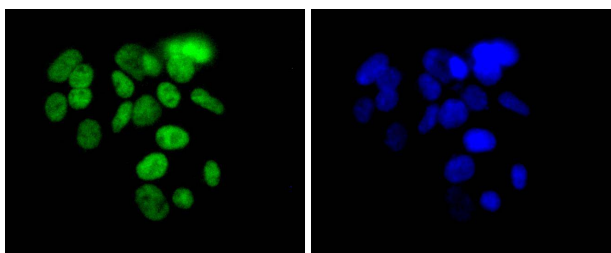
Immunohistochemical analysis of paraffin-embedded mouse brain tissue using anti-ARID1A antibody. Counter stained with hematoxylin.



ICC staining ARID1A in SH-SY-5Y cells (green). The nuclear counter stain is DAPI (blue). Cells were fixed in paraformaldehyde, permeabilised with 0.25% Triton X100/PBS.



ICC staining ARID1A in HeLa cells (green). The nuclear counter stain is DAPI (blue). Cells were fixed in paraformaldehyde, permeabilised with 0.25% Triton X100/PBS.



ICC staining ARID1A in 293 cells (green). The nuclear counter stain is DAPI (blue). Cells were fixed in paraformaldehyde, permeabilised with 0.25% Triton X100/PBS.

## Background

The SWI-SNF complex is involved in the activation of transcription via the remodeling of nucleosome structure in an ATP-dependent manner. Brm (also designated SNF2 $\alpha$ ) and Brg-1 (also designated SNF2 $\beta$ ) are the ATPase subunits of the mammalian SWI-SNF complex. Brm, Brg-1, Ini1 (integrase interactor 1, also designated SNF5), BAF155 (also designated SRG3) and BAF170 are thought to comprise the functional core of the SWI-SNF complex. Addition of Ini1, BAF155 and BAF170 to Brg-1 appears to increase remodeling activity. Other complex subunits, such as BAF250a (p270 or ARID 1A) and BAF250b(ARID1B), are thought to play regulatory roles.

## References

Note: This product is for in vitro research use only