

CDC42 Rabbit mAb

Catalog No: #49282



Package Size: #49282-1 50ul #49282-2 100ul

Orders: order@signalwayantibody.com
Support: tech@signalwayantibody.com

Description

Product Name	CDC42 Rabbit mAb
Host Species	Recombinant Rabbit
Clonality	Monoclonal antibody
Clone No.	JJ086-04
Purification	ProA affinity purified
Applications	WB, IHC, IP, FC
Species Reactivity	Hu, Ms, Rt
Immunogen Description	recombinant protein
Other Names	CDC42 antibody CDC42_HUMAN antibody CDC42Hs antibody Cell division control protein 42 homolog antibody Cell division cycle 42 (GTP binding protein 25kDa) antibody Cell division cycle 42 antibody dJ224A6.1.1 (cell division cycle 42 (GTP-binding protein, 25kD)) antibody dJ224A6.1.2 (cell division cycle 42 (GTP-binding protein, 25kD)) antibody G25K antibody G25K GTP-binding protein antibody Growth regulating protein antibody GTP binding protein 25kDa antibody Small GTP binding protein CDC42 antibody TKS antibody
Accession No.	Swiss-Prot#:P60953
Uniprot	P60953
GeneID	998;
Calculated MW	21 kDa
Formulation	1*TBS (pH7.4), 1%BSA, 40%Glycerol. Preservative: 0.05% Sodium Azide.
Storage	Store at -20°C

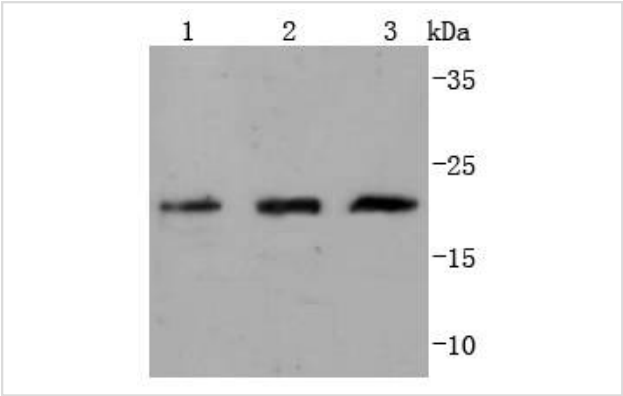
Application Details

WB: 1:1,000

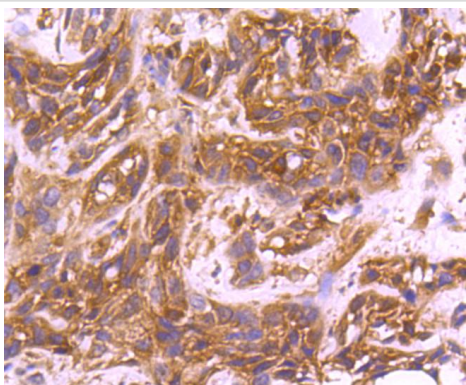
IHC: 1:50-1:200

FC: 1:50-1:100

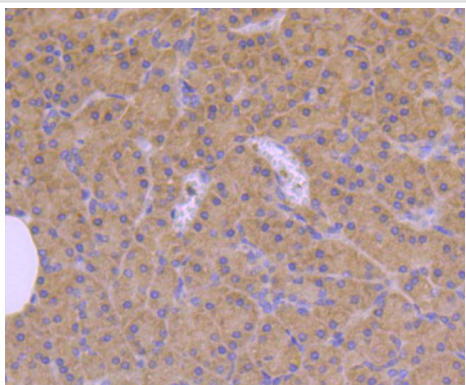
Images



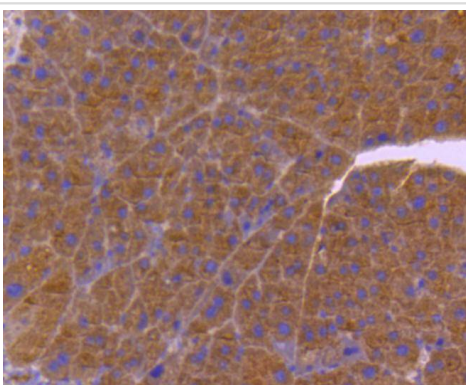
Western blot analysis of CDC42 on different lysates using anti-CDC42 antibody at 1/1,000 dilution. Positive control:
Lane 1: HeLa Lane 2: Jurkat Lane 3: HepG2



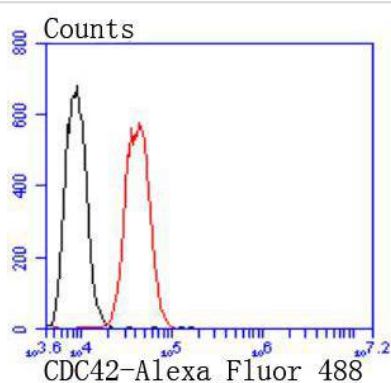
Immunohistochemical analysis of paraffin-embedded human breast carcinoma tissue using anti-CDC42 antibody. Counter stained with hematoxylin.



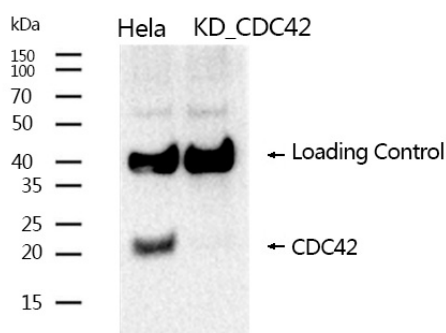
Immunohistochemical analysis of paraffin-embedded human pancreas tissue using anti-CDC42 antibody. Counter stained with hematoxylin.



Immunohistochemical analysis of paraffin-embedded mouse pancreas tissue using anti-CDC42 antibody. Counter stained with hematoxylin.



Flow cytometric analysis of HeLa cells with CDC42 antibody at 1/50 dilution (red) compared with an unlabelled control (cells without incubation with primary antibody; black). Alexa Fluor 488-conjugated goat anti rabbit IgG was used as the secondary antibody.



Western blotting analysis using CDC42 Antibody #49282.

Background

The superfamily of GTP-binding proteins, for which the Ras proteins are prototypes, has been implicated in regulation of diverse biological activities involving various aspects of cell growth and division. One mammalian member of the family, Cdc42, has an amino acid sequence that is similar to those of various members of the Ras superfamily proteins, including N-, K- and H-Ras, Rho proteins and the Rac proteins. On the basis of in vitro phosphorylation studies, it has been suggested that human Cdc42 may function in the signaling pathway of the EGF receptor or related growth factor receptor protein kinases. The Dbl oncogene has been shown to specifically catalyze dissociation of GDP from human Cdc42.

Note: This product is for in vitro research use only