

PTP1B Rabbit mAb

Catalog No: #49305



Package Size: #49305-1 50ul #49305-2 100ul

Orders: [order@signalwayantibody.com](mailto:order@signalwayantibody.com)  
Support: [tech@signalwayantibody.com](mailto:tech@signalwayantibody.com)

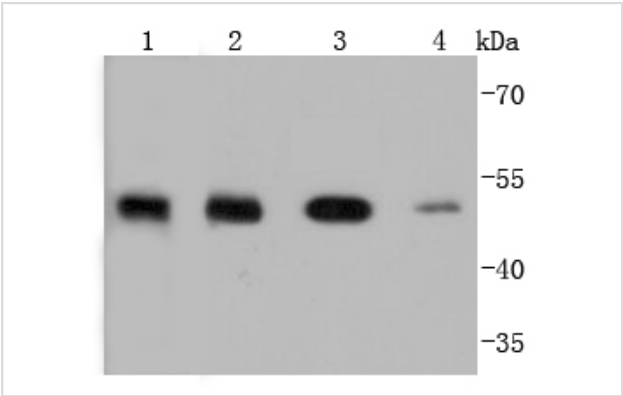
Description

Product Name	PTP1B Rabbit mAb
Host Species	Recombinant Rabbit
Clonality	Monoclonal antibody
Clone No.	JJ0935
Purification	ProA affinity purified
Applications	WB, ICC/IF, IHC, FC
Species Reactivity	Hu, zebrafish
Immunogen Description	recombinant protein
Other Names	PTP1B antibody Non receptor tyrosine phosphatase 1 antibody Protein phosphotyrosylphosphatase 1B antibody Protein tyrosine phosphatase 1B antibody Protein tyrosine phosphatase non receptor type 1 antibody Protein tyrosine phosphatase placental antibody Protein-tyrosine phosphatase 1B antibody PTN1_HUMAN antibody PTP 1B antibody PTP-1B antibody PTPN 1 antibody PTPN1 antibody Tyrosine protein phosphatase non receptor type 1 antibody Tyrosine-protein phosphatase non-receptor type 1 antibody
Accession No.	Swiss-Prot#:P18031
Uniprot	P18031
GeneID	5770;
Calculated MW	50 kDa
Formulation	1*TBS (pH7.4), 1%BSA, 40%Glycerol. Preservative: 0.05% Sodium Azide.
Storage	Store at -20°C

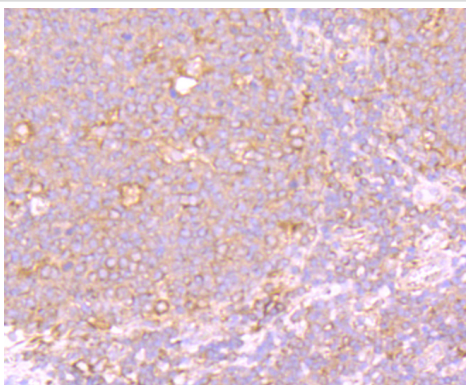
Application Details

WB: 1:1,000-1:2,000 IHC: 1:50-1:200 ICC: 1:100-1:500FC: 1:50-1:100

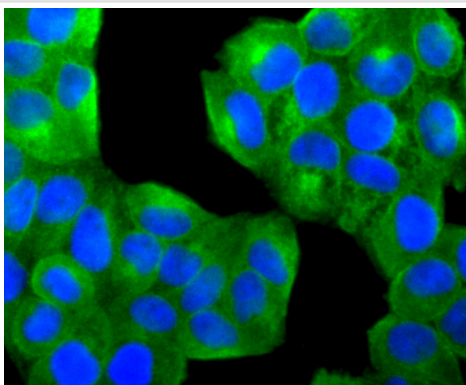
Images



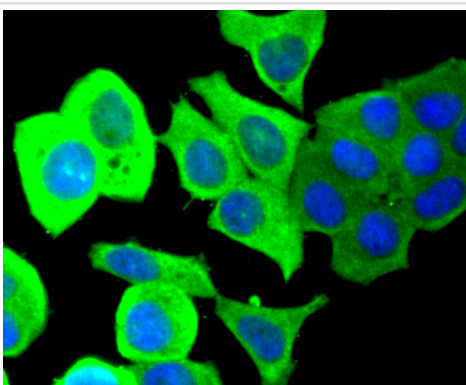
Western blot analysis of PTP1B on different lysates using anti-PTP1B antibody at 1/1,000 dilution. Positive control:  
Lane 1: zebrafish      Lane 2: MCF-7    Lane 3: HepG2  
Lane 4: A431



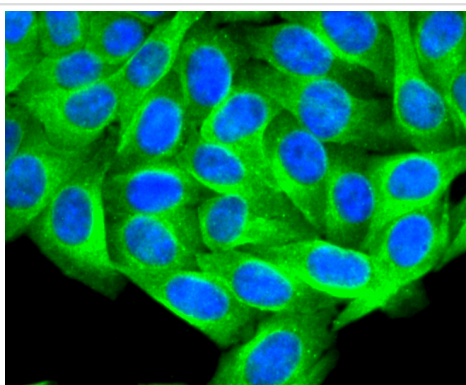
Immunohistochemical analysis of paraffin-embedded human tonsil tissue using anti-PTP1B antibody. Counter stained with hematoxylin.



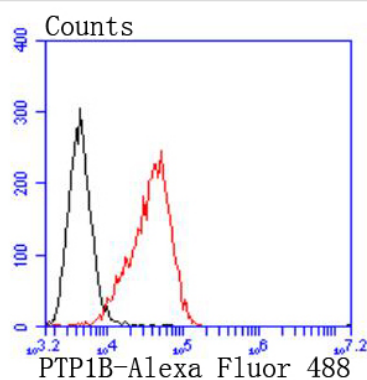
ICC staining PTP1B in HeLa cells (green). The nuclear counter stain is DAPI (blue). Cells were fixed in paraformaldehyde, permeabilised with 0.25% Triton X100/PBS.



ICC staining PTP1B in MCF-7 cells (green). The nuclear counter stain is DAPI (blue). Cells were fixed in paraformaldehyde, permeabilised with 0.25% Triton X100/PBS.



ICC staining PTP1B in HepG2 cells (green). The nuclear counter stain is DAPI (blue). Cells were fixed in paraformaldehyde, permeabilised with 0.25% Triton X100/PBS.



Flow cytometric analysis of Raji cells with PTP1B antibody at 1/50 dilution (red) compared with an unlabelled control (cells without incubation with primary antibody; black). Alexa Fluor 488-conjugated goat anti rabbit IgG was used as the secondary antibody

## Background

The phosphorylation of proteins at tyrosine residues has long been recognized as an important regulatory component of signal transduction. This is a reversible process, involving both enzymes that phosphorylate proteins on tyrosine residues as well as a rapidly expanding family of protein tyrosine phosphatases. These latter enzymes bear little resemblance to either the protein serine and protein threonine phosphatases or to the acid and alkaline phosphatases. In most tissues, the major PTPase is a vanadate- and molybdate-sensitive protein. On the basis of sequence analysis, PTP1B (PTPase 1B) expressed in human placenta exhibits similarities both with the common leukocyte antigen (CD45) and with LAR, a homolog of the neural adhesion molecule (NCAM). PTP1B is synthesized as a 435 amino acid precursor protein which is cleaved to generate the active 321 amino acid enzyme.

## References

Note: This product is for in vitro research use only