

CNPase Rabbit mAb

Catalog No: #49360



Package Size: #49360-1 50ul #49360-2 100ul

Orders: order@signalwayantibody.com
Support: tech@signalwayantibody.com

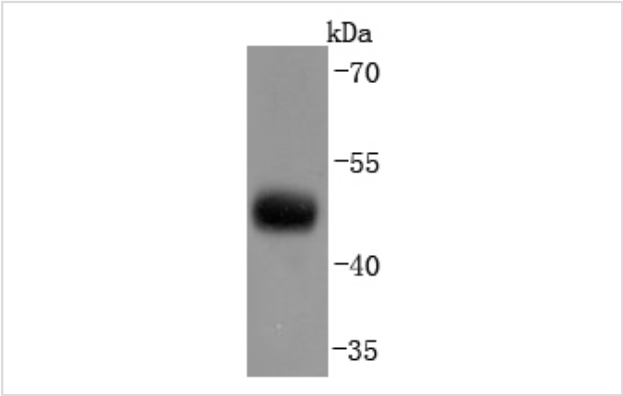
Description

Product Name	CNPase Rabbit mAb
Host Species	Recombinant Rabbit
Clonality	Monoclonal antibody
Clone No.	JF10-25
Purification	ProA affinity purified
Applications	WB, ICC, IHC, FC
Species Reactivity	Hu, Ms, Rt
Immunogen Description	recombinant protein
Other Names	2" antibody 2'3' cyclic nucleotide 3' phosphodiesterase antibody 3"-cyclic-nucleotide 3"-phosphodiesterase antibody CN37_HUMAN antibody CNP 1 antibody CNP antibody CNP1 antibody CNPase antibody
Accession No.	Swiss-Prot#:P09543
Uniprot	P09543
GeneID	1267;
Calculated MW	48 kDa
Formulation	1*TBS (pH7.4), 1%BSA, 40%Glycerol. Preservative: 0.05% Sodium Azide.
Storage	Store at -20°C

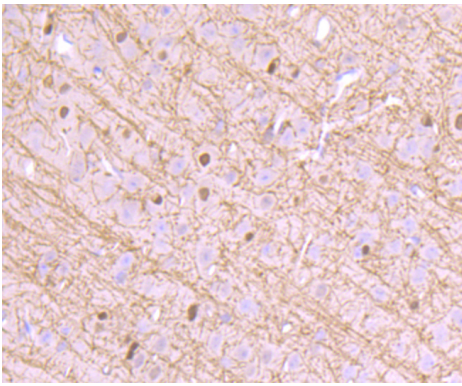
Application Details

WB: 1:1,000-1:2,000 IHC: 1:50-1:200 ICC: 1:50-1:200FC: 1:50-1:100

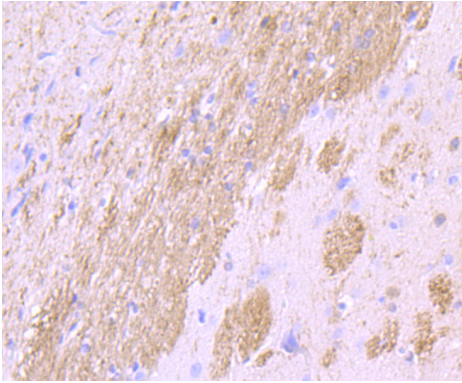
Images



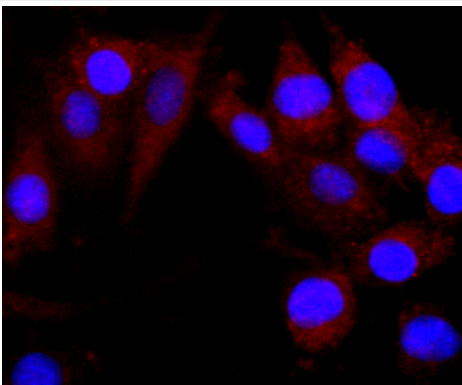
Western blot analysis of CNPase on mouse brain lysates using anti-CNPase antibody at 1/1,000 dilution.



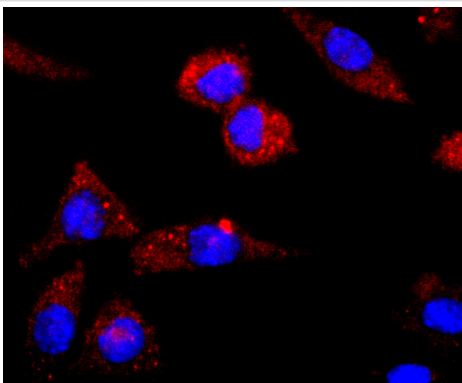
Immunohistochemical analysis of paraffin-embedded mouse brain tissue using anti-CNPase antibody. Counter stained with hematoxylin.



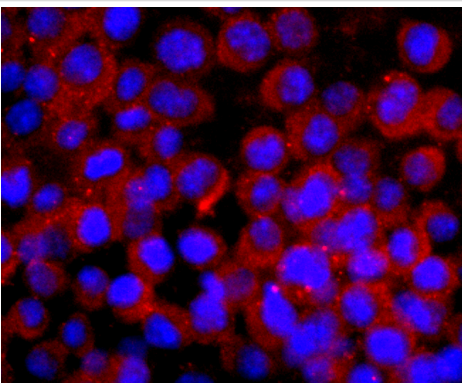
Immunohistochemical analysis of paraffin-embedded rat brain tissue using anti-CNPase antibody. Counter stained with hematoxylin.



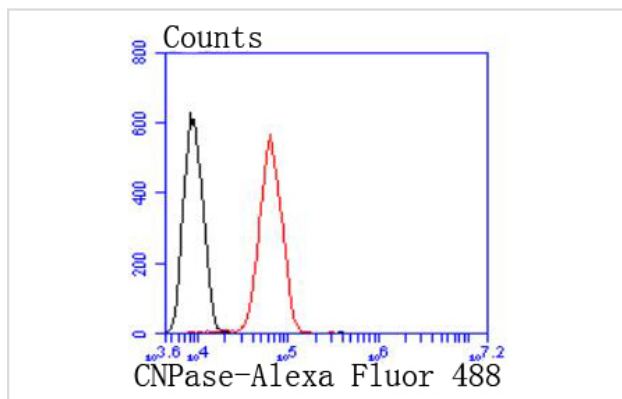
ICC staining CNPase in SHG-44 cells (green). The nuclear counter stain is DAPI (blue). Cells were fixed in paraformaldehyde, permeabilised with 0.25% Triton X100/PBS.



ICC staining CNPase in SH-SY-5Y cells (green). The nuclear counter stain is DAPI (blue). Cells were fixed in paraformaldehyde, permeabilised with 0.25% Triton X100/PBS.



ICC staining CNPase in N2A cells (green). Cells were fixed in paraformaldehyde, permeabilised with 0.25% Triton X100/PBS.



Flow cytometric analysis of SH-SY-5Y cells with CNPase antibody at 1/50 dilution (blue) compared with an unlabelled control (cells without incubation with primary antibody; red). Alexa Fluor 488-conjugated goat anti-rabbit IgG was used as the secondary antibody.

Background

2',3'-cyclic nucleotide-3'-phosphodiesterase (CNPase) is a membrane-bound enzyme that can link tubulin to membranes and may regulate cytoplasmic microtubule distribution. CNPase acts as a microtubule-associated protein by promoting microtubule assembly; this activity resides in the C-terminus of the enzyme. CNPase is firmly associated with tubulin from brain tissue and thyroid cells and can be found at high concentrations in central nervous system myelin and in the outer segments of photoreceptors in the retina. Acute lead intoxication leads to disturbances in CNPase activity and the morphology of myelin.

References

Note: This product is for in vitro research use only