

## Jagged1 Rabbit mAb

Catalog No: #49377

Package Size: #49377-1 50ul #49377-2 100ul

Orders: [order@signalwayantibody.com](mailto:order@signalwayantibody.com)Support: [tech@signalwayantibody.com](mailto:tech@signalwayantibody.com)

## Description

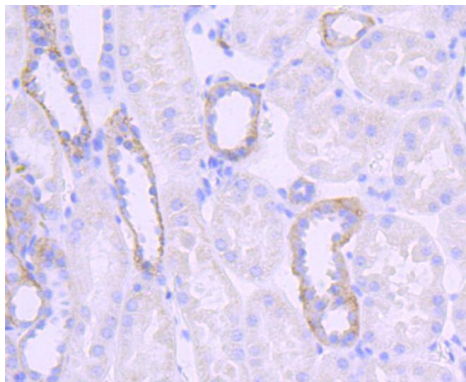
|                       |                                                                                                                                                                                                                                                                                                                                                                                                                             |
|-----------------------|-----------------------------------------------------------------------------------------------------------------------------------------------------------------------------------------------------------------------------------------------------------------------------------------------------------------------------------------------------------------------------------------------------------------------------|
| Product Name          | Jagged1 Rabbit mAb                                                                                                                                                                                                                                                                                                                                                                                                          |
| Clone No.             | JF96-06                                                                                                                                                                                                                                                                                                                                                                                                                     |
| Purification          | ProA affinity purified                                                                                                                                                                                                                                                                                                                                                                                                      |
| Applications          | WB, IHC                                                                                                                                                                                                                                                                                                                                                                                                                     |
| Species Reactivity    | Hu, Ms, Rt                                                                                                                                                                                                                                                                                                                                                                                                                  |
| Immunogen Description | recombinant protein                                                                                                                                                                                                                                                                                                                                                                                                         |
| Other Names           | AGS antibody AHD antibody AWS antibody CD 339 antibody CD339 antibody CD339 antigen antibody Headturner antibody hJ1 antibody Htu antibody Jag 1 antibody Jag1 antibody JAG1_HUMAN antibody Jagged 1 antibody Jagged1 (Alagille syndrome) antibody Jagged1 antibody JAGL1 antibody MGC104644 antibody OTTHUMP00000030278 antibody Protein jagged-1 antibody Ser 1 antibody Ser1 antibody Serrate 1 antibody Slalom antibody |
| Accession No.         | Swiss-Prot#:P78504                                                                                                                                                                                                                                                                                                                                                                                                          |
| Uniprot               | P78504                                                                                                                                                                                                                                                                                                                                                                                                                      |
| GeneID                | 182;                                                                                                                                                                                                                                                                                                                                                                                                                        |
| Calculated MW         | 134 kDa                                                                                                                                                                                                                                                                                                                                                                                                                     |
| Formulation           | 1*TBS (pH7.4), 1%BSA, 40%Glycerol. Preservative: 0.05% Sodium Azide.                                                                                                                                                                                                                                                                                                                                                        |
| Storage               | Store at -20°C                                                                                                                                                                                                                                                                                                                                                                                                              |

## Application Details

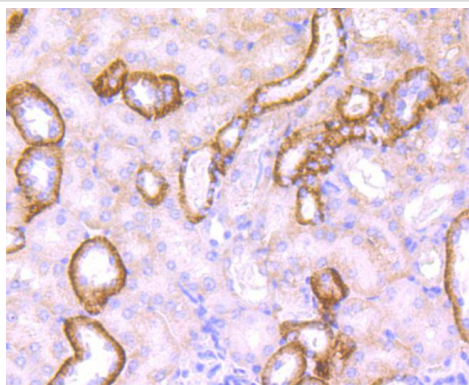
WB: 1:1,000

IHC: 1:50-1:200

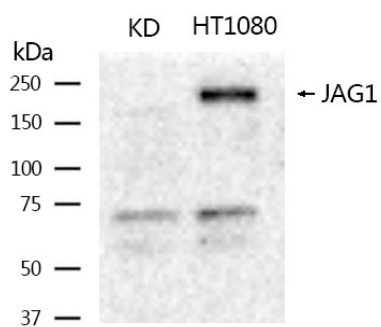
## Images



Immunohistochemical analysis of paraffin-embedded human kidney tissue using anti-Jagged1 antibody. Counter stained with hematoxylin.



Immunohistochemical analysis of paraffin-embedded mouse kidney tissue using anti-Jagged1 antibody. Counter stained with hematoxylin.



Western blotting analysis using Jagged1 Antibody #49377.

## Background

The LIN-12/Notch family of transmembrane receptors is believed to play a central role in development by regulating cell fate decisions. Ligands for Notch include Jagged1, Jagged2 and Delta. Jagged is a membrane protein and can activate Notch and prevent myoblast differentiation by inhibiting the expression of muscle regulatory and structural genes. It is involved in mammalian cardiovascular development and in cell-fate decisions during hematopoiesis. Jagged is expressed in adult and fetal tissues, and expression is upregulated in cervical squamous cell carcinoma. Familial Tetralogy of Fallot, the most common form of complex congenital heart disease, is caused by a mutation in the Jagged1 gene.

Note: This product is for in vitro research use only