

KLF4 Rabbit mAb

Catalog No: #49385



Package Size: #49385-1 50ul #49385-2 100ul

Orders: [order@signalwayantibody.com](mailto:order@signalwayantibody.com)  
Support: [tech@signalwayantibody.com](mailto:tech@signalwayantibody.com)

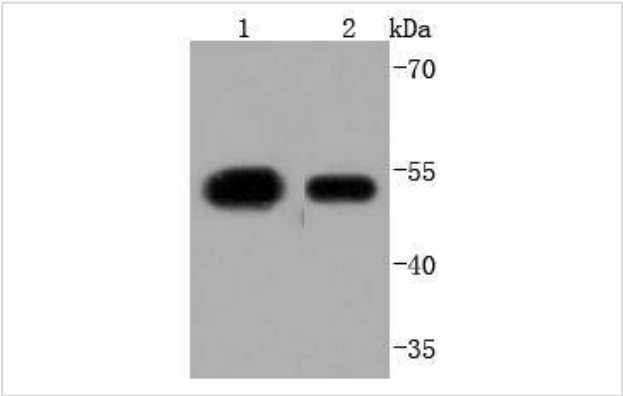
Description

Product Name	KLF4 Rabbit mAb
Host Species	Recombinant Rabbit
Clonality	Monoclonal antibody
Clone No.	JF98-08
Purification	ProA affinity purified
Applications	WB, ICC/IF, IHC
Species Reactivity	Hu, Ms, Rt
Immunogen Description	recombinant protein
Other Names	Endothelial Kruppel like zinc finger protein antibody Epithelial zinc finger protein EZF antibody EZF antibody GKLF antibody gut Kruppel-like factor antibody Gut-enriched krueppel-like factor antibody KLF antibody KLF4 antibody KLF4_HUMAN antibody Krueppel-like factor 4 antibody Kruppel like factor 4 (Epithelial zinc finger protein EZF) (Gut enriched Krueppel like factor) antibody Kruppel like factor 4 (gut) antibody
Accession No.	Swiss-Prot#:O43474
Uniprot	O43474
GeneID	9314;
Calculated MW	55 kDa
Formulation	1*TBS (pH7.4), 1%BSA, 40%Glycerol. Preservative: 0.05% Sodium Azide.
Storage	Store at -20°C

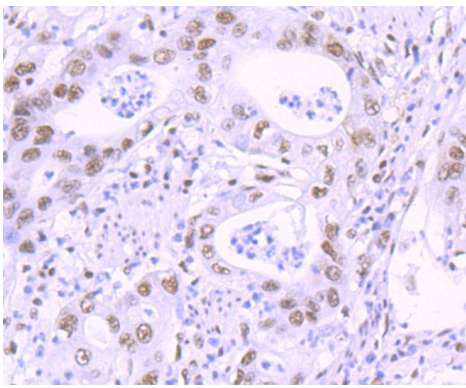
Application Details

WB: 1:1,000-5,000IHC: 1:50-1:200ICC: 1:50-1:200

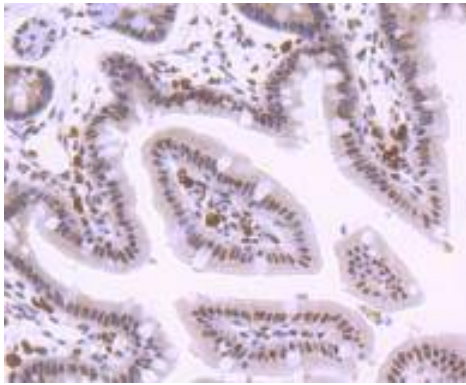
Images



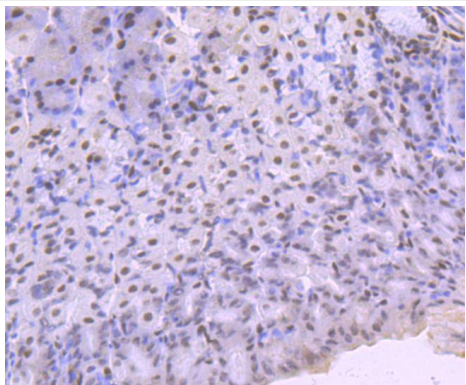
Western blot analysis of KLF4 on different lysates using anti-KLF4 antibody at 1/1,000 dilution. Positive control: Lane 1: 293 Lane 2: NCCIT



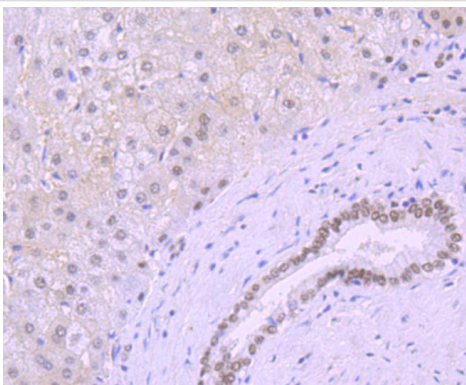
Immunohistochemical analysis of paraffin-embedded human gastric carcinoma tissue using anti-KLF4 antibody. Counter stained with hematoxylin.



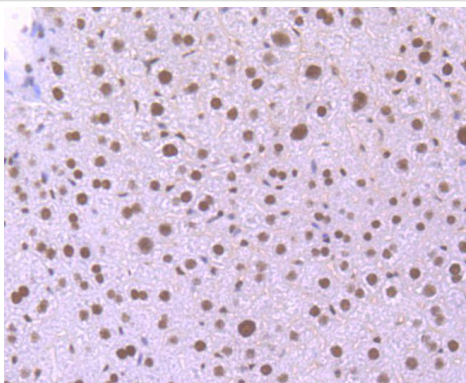
Immunohistochemical analysis of paraffin-embedded mouse colon tissue using anti-KLF4 antibody. Counter stained with hematoxylin.



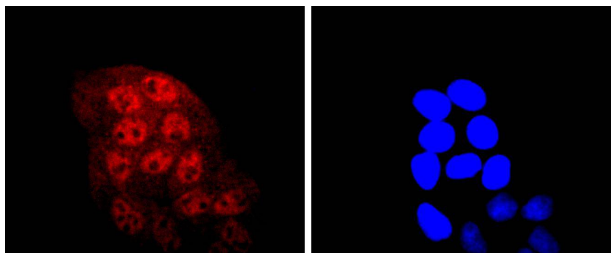
Immunohistochemical analysis of paraffin-embedded mouse stomach tissue using anti-KLF4 antibody. Counter stained with hematoxylin.



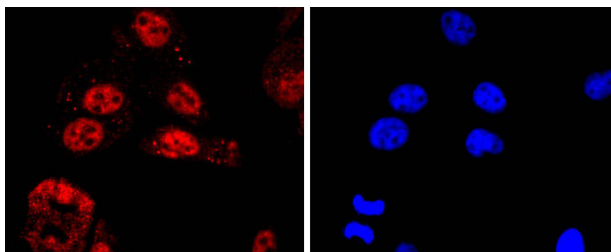
Immunohistochemical analysis of paraffin-embedded human liver tissue using anti-KLF4 antibody. Counter stained with hematoxylin.



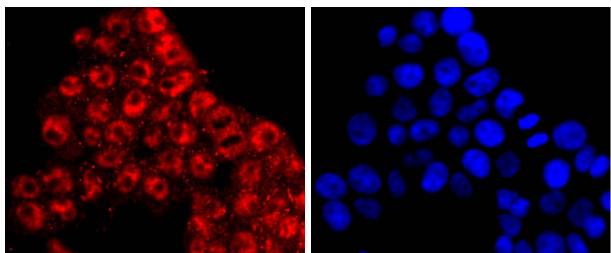
Immunohistochemical analysis of paraffin-embedded mouse liver tissue using anti-KLF4 antibody. Counter stained with hematoxylin.



ICC staining KLF4 in HeLa cells (red). The nuclear counter stain is DAPI (blue). Cells were fixed in paraformaldehyde, permeabilised with 0.25% Triton X100/PBS.



ICC staining KLF4 in PC-3M cells (red). The nuclear counter stain is DAPI (blue). Cells were fixed in paraformaldehyde, permeabilised with 0.25% Triton X100/PBS.



ICC staining KLF4 in 293T cells (red). The nuclear counter stain is DAPI (blue). Cells were fixed in paraformaldehyde, permeabilised with 0.25% Triton X100/PBS.

## Background

The Kruppel-type zinc finger transcription factors comprise a conserved family of DNA binding proteins that are important in developmental regulation. The Kruppel zinc finger transcription factor was initially identified in *Drosophila* as a segmentation gene. Kruppel-like factors that have been characterized in mammals include EKLF, LKLF and GKLF (6-8). EKLF is expressed principally in erythroid tissues, and LKLF expression is limited to the lung. GKLF is found predominantly in gut and has been shown to be expressed during growth arrest.

## References

Note: This product is for in vitro research use only