

Cyclophilin A Rabbit mAb

Catalog No: #49446



Package Size: #49446-1 50ul #49446-2 100ul

Orders: [order@signalwayantibody.com](mailto:order@signalwayantibody.com)  
Support: [tech@signalwayantibody.com](mailto:tech@signalwayantibody.com)

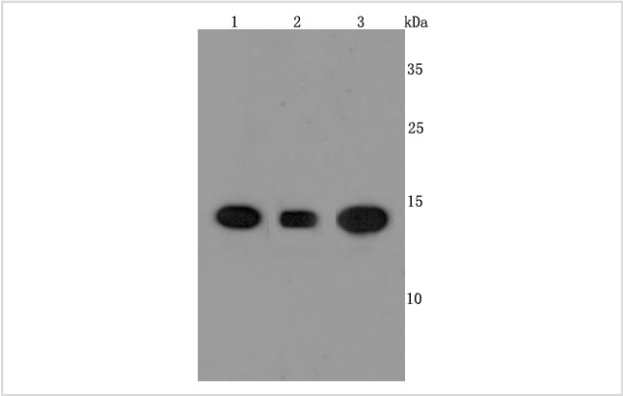
Description

Product Name	Cyclophilin A Rabbit mAb
Host Species	Recombinant Rabbit
Clonality	Monoclonal antibody
Clone No.	JM107-03
Purification	ProA affinity purified
Applications	WB, IHC
Species Reactivity	Hu, Ms, Rt
Immunogen Description	recombinant protein
Other Names	Cyclophilin A antibody Cyclophilin antibody CyclophilinA antibody Cyclosporin A binding protein antibody Cyclosporin A-binding protein antibody CYPA antibody CYPH antibody Epididymis secretory sperm binding protein Li 69p antibody HEL S 69p antibody MGC117158 antibody MGC12404 antibody MGC23397 antibody Peptidyl prolyl cis trans isomerase A antibody Peptidyl-prolyl cis-trans isomerase A antibody Peptidylprolyl isomerase A (cyclophilin A) antibody Peptidylprolyl isomerase A antibody PPIA antibody PPIA protein antibody PPIA_HUMAN antibody PPlase A antibody Rotamase A antibody RotamaseA antibody T cell cyclophilin antibody
Accession No.	Swiss-Prot#:P62937
Uniprot	P62937
GeneID	5478;
Calculated MW	18 kDa
Formulation	1*TBS (pH7.4), 1%BSA, 40%Glycerol. Preservative: 0.05% Sodium Azide.
Storage	Store at -20°C

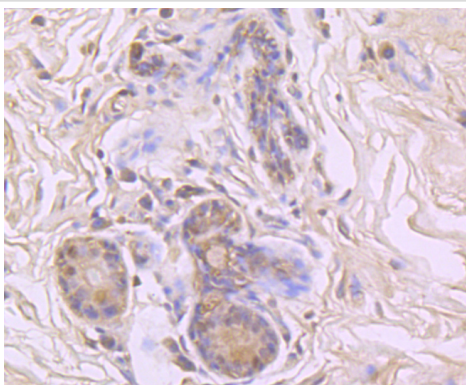
Application Details

WB: 1:1,000-5,000IHC: 1:50-1:200

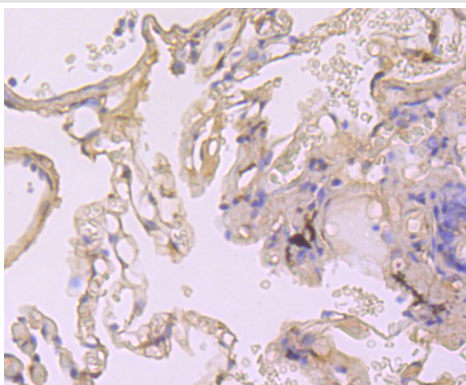
Images



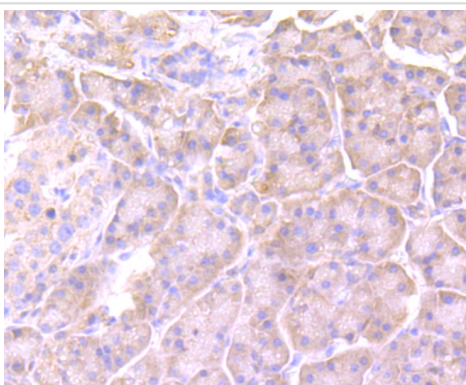
Western blot analysis of Cyclophilin A on different cells lysates using anti-Cyclophilin A antibody at 1/1,000 dilution. Positive control: Lane 1: Hela Lane 2: A431 Lane 3: HepG2



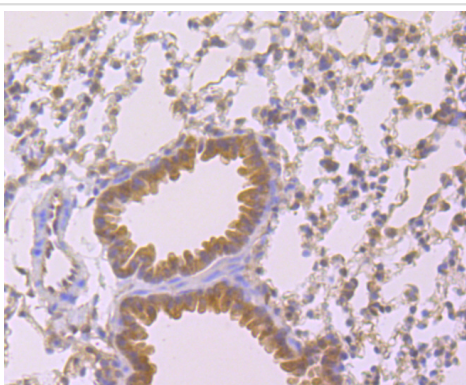
Immunohistochemical analysis of paraffin-embedded human breast carcinoma tissue using anti-Cyclophilin A antibody. Counter stained with hematoxylin.



Immunohistochemical analysis of paraffin-embedded human lung tissue using anti-Cyclophilin A antibody. Counter stained with hematoxylin.



Immunohistochemical analysis of paraffin-embedded human pancreas tissue using anti-Cyclophilin A antibody. Counter stained with hematoxylin.



Immunohistochemical analysis of paraffin-embedded mouse lung tissue using anti-Cyclophilin A antibody. Counter stained with hematoxylin.

## Background

The immunosuppressant cyclosporin A (CsA) forms a trimolecular complex with cyclophilin and calcineurins to inhibit calcineurin phosphatase activity. Cyclophilins are conserved, ubiquitous and abundant cytosolic peptidyl-prolyl cis-trans isomerases that accelerate the isomerization of XaaPro peptide bonds and the refolding of proteins. Human cyclophilin A (CyPA), an intracellular protein of 165 amino acids, is the target of the CsA and is encoded by a single unique gene conserved from yeast to humans. CyPA is known for its involvement in T cell differentiation and proliferation and is highly expressed in brain. CyPA is incorporated into the virion of the type 1 human immunodeficiency virus (HIV-1) via a direct interaction with the capsid domain of the viral Gag polyprotein and is crucial for efficient viral replication. Cyclophilin B (CyPB) is a member of the cyclophilin family with specific N- and C-terminal extensions. Unlike CyPA, CyPB has a signal sequence leading to its translocation in the endoplasmic reticulum. CyPB is secreted in

biological fluids such as blood or milk and binds to a specific receptor present on the human lymphoblastic cell line Jurkat and on human peripheral blood lymphocytes (9,10).

## References

---

---

Note: This product is for in vitro research use only