

Syndecan 1 Rabbit mAb

Catalog No: #49455



Package Size: #49455-1 50ul #49455-2 100ul

Orders: order@signalwayantibody.com
Support: tech@signalwayantibody.com

Description

Product Name	Syndecan 1 Rabbit mAb
Clone No.	SR4541
Purification	ProA affinity purified
Applications	WB;ICC/IF;IHC;FC
Species Reactivity	Hu, Ms, Rt
Immunogen Description	recombinant protein
Other Names	CD_antigen antibody CD138 antibody CD138 antigen antibody heparan sulfate proteoglycan fibroblast growth factor receptor antibody SDC antibody Sdc1 antibody SDC1_HUMAN antibody SYND1 antibody Syndecan 1 antibody Syndecan antibody syndecan proteoglycan 1 antibody Syndecan-1 antibody
Accession No.	Swiss-Prot#:P18827
Uniprot	P18827
GeneID	6382;
Calculated MW	35 kDa
Formulation	1*TBS (pH7.4), 1%BSA, 40%Glycerol. Preservative: 0.05% Sodium Azide.
Storage	Store at -20°C

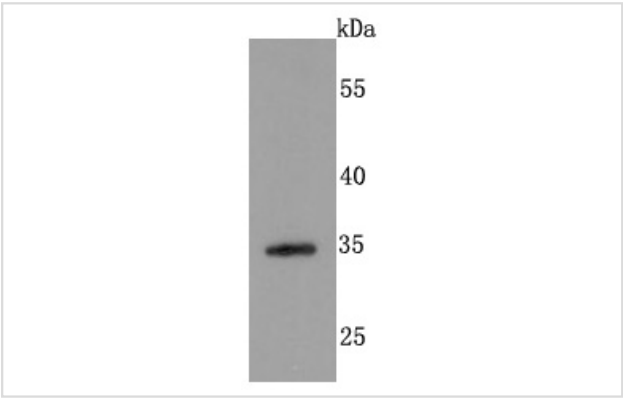
Application Details

WB: 1:500-1:1000

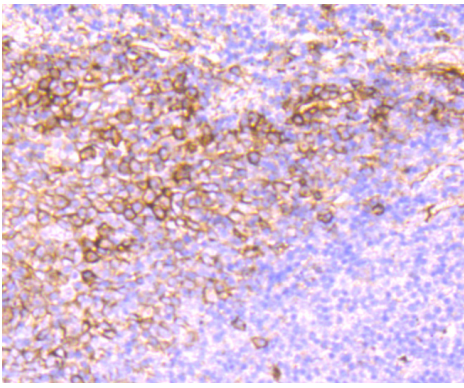
IHC: 1:50-1:200

ICC: 1:100-1:500

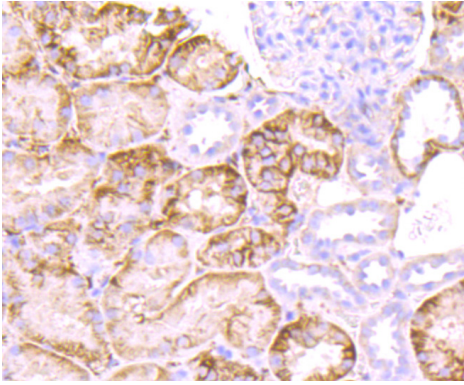
Images



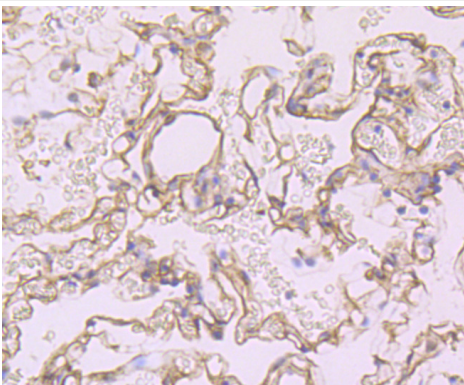
Western blot analysis of Syndecan 1 on NIH-3T3 cells lysates using anti-Syndecan 1 antibody at 1/500 dilution.



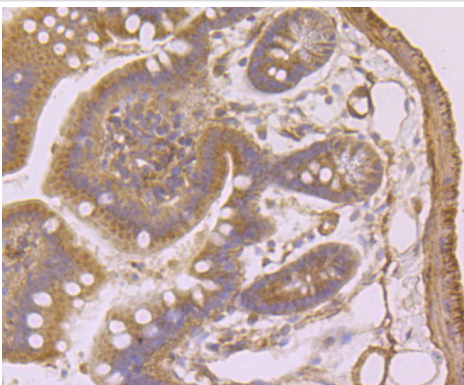
Immunohistochemical analysis of paraffin-embedded human tonsil tissue using anti-Syndecan 1 antibody. Counter stained with hematoxylin.



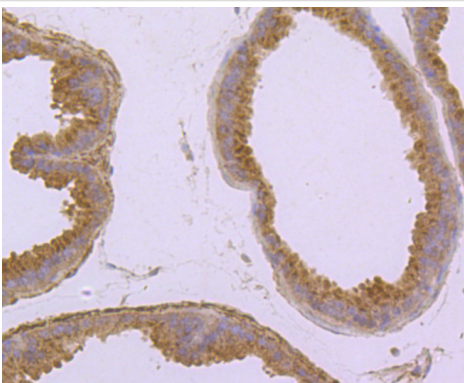
Immunohistochemical analysis of paraffin-embedded human kidney tissue using anti-Syndecan 1 antibody. Counter stained with hematoxylin.



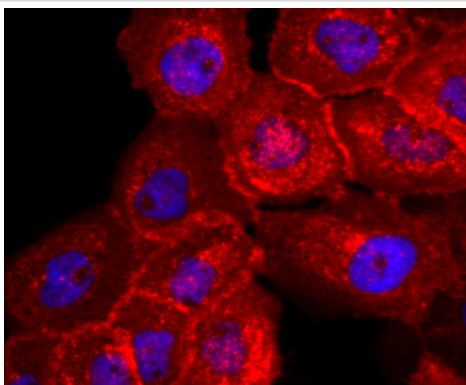
Immunohistochemical analysis of paraffin-embedded human lung tissue using anti-Syndecan 1 antibody. Counter stained with hematoxylin.



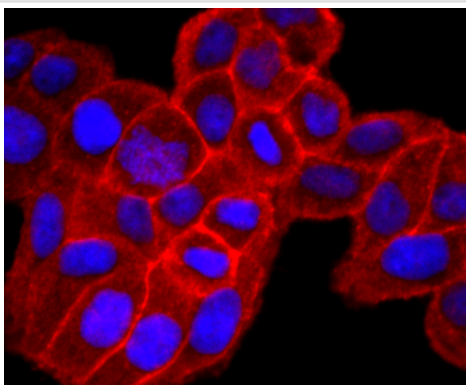
Immunohistochemical analysis of paraffin-embedded mouse colon tissue using anti-Syndecan 1 antibody. Counter stained with hematoxylin.



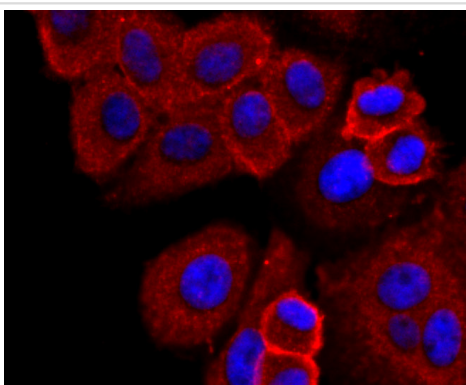
Immunohistochemical analysis of paraffin-embedded mouse prostate tissue using anti-Syndecan 1 antibody. Counter stained with hematoxylin.



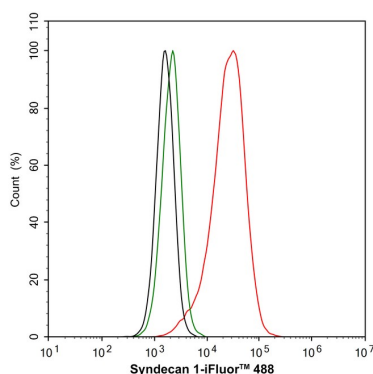
ICC staining Syndecan 1 in A431 cells (red). The nuclear counter stain is DAPI (blue). Cells were fixed in paraformaldehyde, permeabilised with 0.25% Triton X100/PBS.



ICC staining Syndecan 1 in HeLa cells (red). The nuclear counter stain is DAPI (blue). Cells were fixed in paraformaldehyde, permeabilised with 0.25% Triton X100/PBS.



ICC staining Syndecan 1 in HepG2 cells (red). The nuclear counter stain is DAPI (blue). Cells were fixed in paraformaldehyde, permeabilised with 0.25% Triton X100/PBS.



Flow cytometric analysis of HeLa cells labeling Syndecan 1. Cells were washed twice with cold PBS and resuspend. Then stained with the primary antibody (1ug/mL) (red) compared with Rabbit IgG Isotype Control (green). After incubation of the primary antibody at +4°C for an hour, the cells were stained with a iFluor 488 conjugate-Goat anti-Rabbit IgG Secondary antibody at 1/1,000 dilution for 30 minutes at +4°C. Unlabelled sample was used as a control (cells without incubation with primary antibody; black).

Background

Syndecan-1 (SYND1), also designated CD138, is a type I integral membrane proteoglycan that contains both chondroitin sulfate and heparan sulfate groups. It is expressed in mouse on pre-B cells, immature B cells and plasma cells. Syndecan-1 is also found on the basolateral surfaces of epithelial cells, endothelial cells of sprouting capillaries and embryonic condensing mesenchymal cells. Syndecan-1 functions as an extracellular matrix receptor which binds to collagens, Fibronectin and Thrombospondin. It has been shown to co-localize with Actin-rich filaments and may act to link the cytoskeleton to the extracellular matrix.

Note: This product is for in vitro research use only