

# HSPBAP1 Polyclonal Antibody

Catalog No: #41554



Package Size: #41554-1 50ul #41554-2 100ul

Orders: [order@signalwayantibody.com](mailto:order@signalwayantibody.com)  
Support: [tech@signalwayantibody.com](mailto:tech@signalwayantibody.com)

## Description

Product Name	HSPBAP1 Polyclonal Antibody
Host Species	Rabbit
Clonality	Polyclonal
Purification	The antibody was affinity-purified from rabbit antiserum by affinity-chromatography using epitope-specific immunogen.
Applications	WB ELISA
Species Reactivity	Hu
Specificity	HSPBAP1 Polyclonal Antibody detects endogenous levels of HSPBAP1 protein.
Immunogen Type	peptide
Immunogen Description	Synthesized peptide derived from the Internal region of human HSPBAP1.
Target Name	HSPBAP1
Other Names	HSPBAP1; PASS1; HSPB1-associated protein 1; 27 kDa heat shock protein-associated protein 1; Protein associated with small stress protein 1
Accession No.	Swiss-Prot: Q96EW2NCBI Gene ID: 79663
Uniprot	Q96EW2
GeneID	79663;
SDS-PAGE MW	55kd
Concentration	1mg/ml
Formulation	Liquid in PBS containing 50% glycerol, 0.5% BSA and 0.02% sodium azide.
Storage	Store at -20°C/1 year

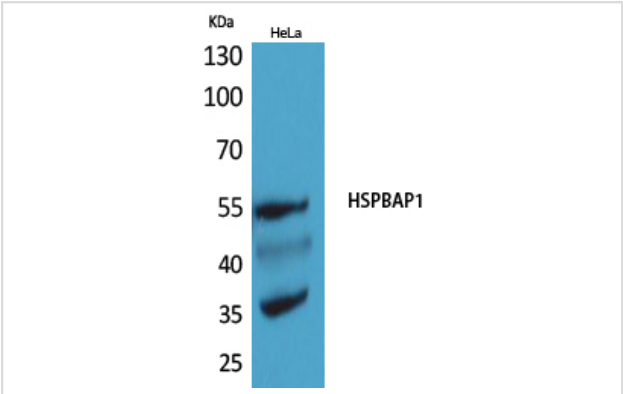
## Application Details

Western Blot: 1/500 - 1/2000.

ELISA: 1/20000.

Not yet tested in other applications.

## Images



Western Blot analysis of HeLa cells using HSPBAP1 Polyclonal Antibody

---

Note: This product is for in vitro research use only