

## IP10 Rabbit mAb

Catalog No: #49539



Package Size: #49539-1 50ul #49539-2 100ul

Orders: order@signalwayantibody.com

Support: tech@signalwayantibody.com

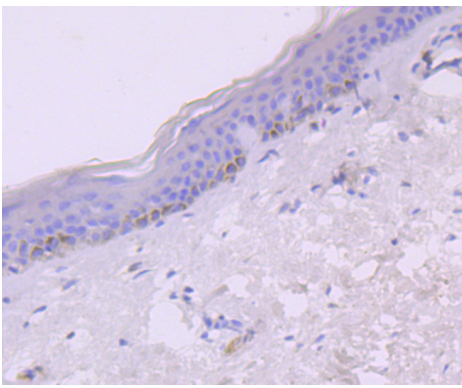
## Description

Product Name	IP10 Rabbit mAb
Host Species	Recombinant Rabbit
Clonality	Monoclonal antibody
Clone No.	JA10-82
Purification	ProA affinity purified
Applications	WB, ICC/IF, IHC
Species Reactivity	Hu
Immunogen Description	recombinant protein
Other Names	Interferon gamma induced factor MOB1, mouse, homolog of antibody Interferon gamma induced protein 10 antibody 10 kDa interferon gamma induced protein antibody 10 kDa interferon gamma-induced protein antibody C X C motif chemokine 10 antibody C7 antibody Chemokine (C X C motif) ligand 10 antibody Chemokine CXC motif ligand 10 antibody Crg 2 antibody CRG2 antibody CXCL10 antibody CXCL10(1-73) antibody CXL10_HUMAN antibody Gamma IP10 antibody Gamma-IP10 antibody gIP 10 antibody GIP10 antibody IFI10 antibody INP 10 antibody INP10 antibody Interferon activated gene 10 antibody Interferon activated gene 10 antibody Interferon gamma induced cell line antibody Interferon inducible cytokine IP 10 antibody Interferon inducible cytokine IP10 antibody IP 10 antibody IP-10 antibody Mob 1 antibody MOB1 antibody Protein 10 from interferon (gamma) induced cell line antibody SCYB10 antibody Small inducible cytokine B10 antibody Small inducible cytokine B10 precursor antibody Small inducible cytokine subfamily B (Cys X Cys) member 10 antibody Small inducible cytokine subfamily B CXC member 10 antibody Small inducible cytokine subfamily B, member 10 antibody Small-inducible cytokine B10 antibody
Accession No.	Swiss-Prot#:P02778
Uniprot	P02778
GeneID	3627;
Calculated MW	10 kDa
Formulation	1*TBS (pH7.4), 1%BSA, 40%Glycerol. Preservative: 0.05% Sodium Azide.
Storage	Store at -20°C

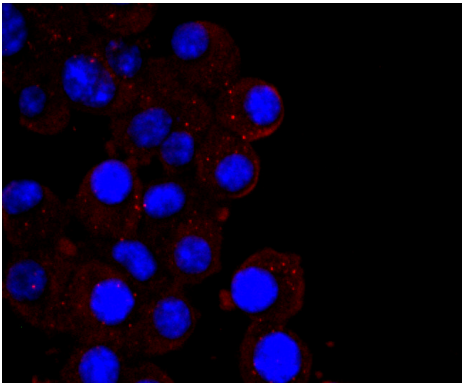
## Application Details

WB: 1:500-1:1,000 IHC: 1:50-1:200 ICC: 1:50-1:100

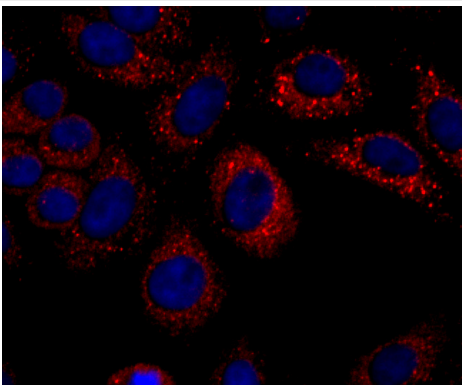
## Images



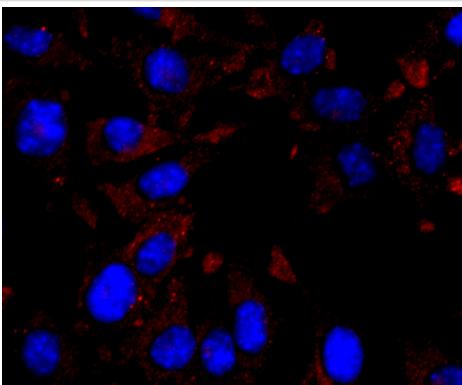
Immunohistochemical analysis of paraffin-embedded human skin tissue using anti-IP10 antibody. Counter stained with hematoxylin.



ICC staining IP10 in N2A cells (red). The nuclear counter stain is DAPI (blue). Cells were fixed in paraformaldehyde, permeabilised with 0.25% Triton X100/PBS.



ICC staining IP10 in HepG2 cells (red). The nuclear counter stain is DAPI (blue). Cells were fixed in paraformaldehyde, permeabilised with 0.25% Triton X100/PBS.



ICC staining IP10 in SH-SY5Y cells (red). The nuclear counter stain is DAPI (blue). Cells were fixed in paraformaldehyde, permeabilised with 0.25% Triton X100/PBS.

## Background

Chemokines are members of a superfamily of inducible, secreted, pro-inflammatory cytokines. Members of the chemokine family exhibit 20% to 50% homology in their predicted amino acid sequences and are divided into four subfamilies: C-C, C-X-C, C and C-X3-C. In the C-X-C or  $\alpha$  subfamily, the first two of four cysteine motifs are separated by another amino acid residue. In the second subfamily, designated C-C or  $\beta$ , the first cysteines are adjacent. C subfamily members, also designated  $\gamma$  chemokines, lack the first and third cysteine residues of the conserved motif. In the C-X3-C, or  $\delta$  subfamily, members have three amino acids between the two cysteines. The C-X-C chemokine subfamily includes IL-8, GRO $\alpha$ / $\beta$ / $\gamma$  (and the murine homologs KC, MIP-2 $\alpha$  and MIP-2 $\beta$ ), platelet basic protein, ENA-78, GCP-2, PF4, IP-10 (and its murine homolog, CRG) and MIG.

## References

---

Note: This product is for in vitro research use only