

Profilin 1 Rabbit mAb

Catalog No: #49552



Package Size: #49552-1 50ul #49552-2 100ul

Orders: [order@signalwayantibody.com](mailto:order@signalwayantibody.com)  
Support: [tech@signalwayantibody.com](mailto:tech@signalwayantibody.com)

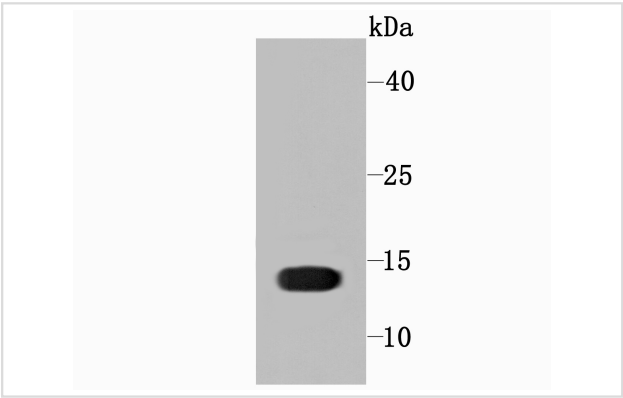
Description

Product Name	Profilin 1 Rabbit mAb
Host Species	Recombinant Rabbit
Clonality	Monoclonal antibody
Clone No.	JA30-13
Purification	ProA affinity purified
Applications	WB, ICC, IHC, FC
Species Reactivity	Hu, Ms,Rt
Immunogen Description	recombinant protein
Other Names	Actin binding protein antibody ALS18 antibody Epididymis tissue protein Li 184a antibody OTTHUMP00000125244 antibody PFN 1 antibody Pfn antibody PFN1 antibody PROF1_HUMAN antibody Profilin I antibody Profilin-1 antibody Profilin1 antibody ProfilinI antibody
Accession No.	Swiss-Prot#:P07737
Uniprot	P07737
GeneID	5216;
Calculated MW	15 kDa
Formulation	1*TBS (pH7.4), 1%BSA, 40%Glycerol. Preservative: 0.05% Sodium Azide.
Storage	Store at -20°C

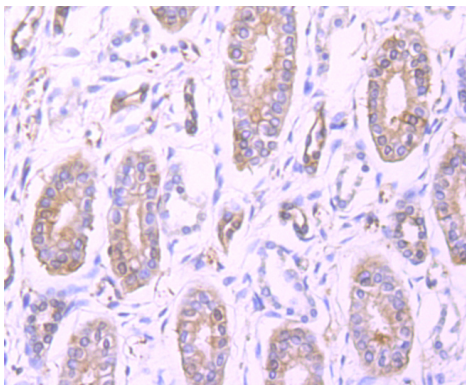
Application Details

WB: 1:500-1:2,000 IHC: 1:50-1:200 ICC: 1:50-1:200FC: 1:50-1:100

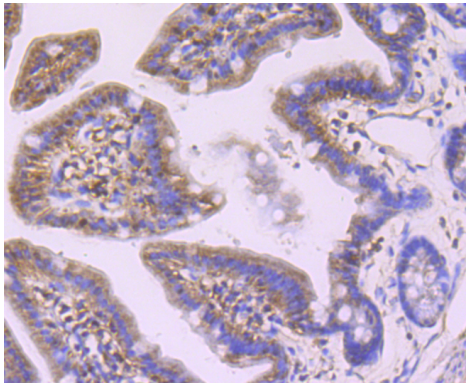
Images



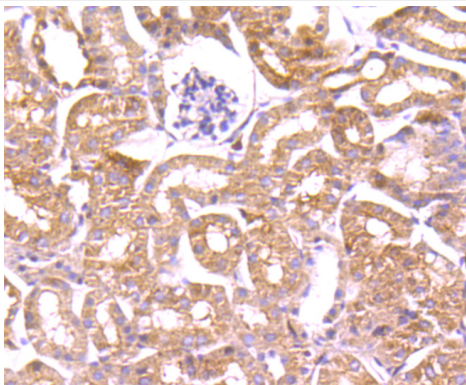
Western blot analysis of Profilin 1 on Hela cell using anti-Profilin 1 antibody at 1/1,000 dilution.



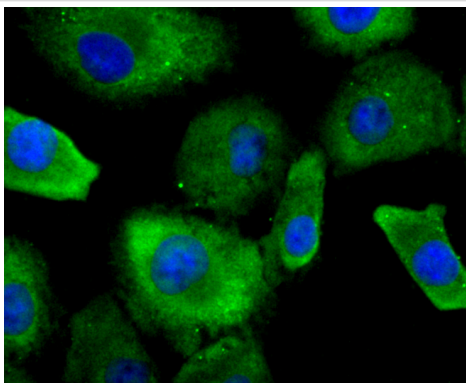
Immunohistochemical analysis of paraffin-embedded human kidney tissue using anti-Profilin 1 antibody. Counter stained with hematoxylin.



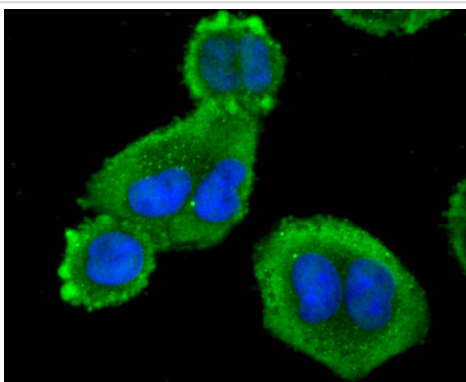
Immunohistochemical analysis of paraffin-embedded mouse colon tissue using anti-Profilin 1 antibody. Counter stained with hematoxylin.



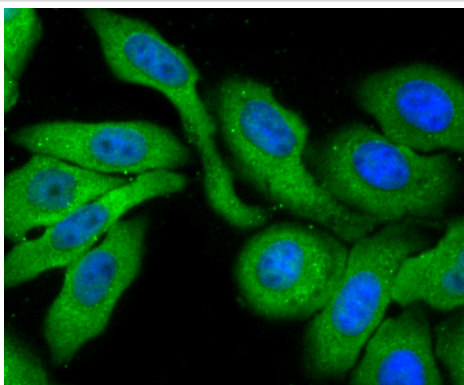
Immunohistochemical analysis of paraffin-embedded mouse kidney tissue using anti-Profilin 1 antibody. Counter stained with hematoxylin.



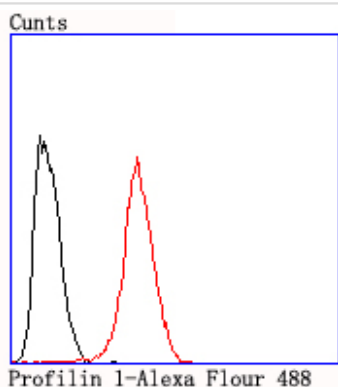
ICC staining Profilin 1 in A549 cells (green). The nuclear counter stain is DAPI (blue). Cells were fixed in paraformaldehyde, permeabilised with 0.25% Triton X100/PBS.



ICC staining Profilin 1 in Hela cells (green). The nuclear counter stain is DAPI (blue). Cells were fixed in paraformaldehyde, permeabilised with 0.25% Triton X100/PBS.



ICC staining Profilin 1 in HepG2 cells (green). The nuclear counter stain is DAPI (blue). Cells were fixed in paraformaldehyde, permeabilised with 0.25% Triton X100/PBS.



Flow cytometric analysis of HeLa cells with Profilin 1 antibody at 1/100 dilution (red) compared with an unlabelled control (cells without incubation with primary antibody; black).

## Background

Profilins regulate Actin polymerization by binding to and sequestering the Actin monomer. Profilins act as a nucleotide exchange factor that charges Actin with ATP after binding the Actin monomer through a 1:1 stoichiometric relationship. Human Profilin-1 and Profilin-2 are encoded by two separate genes mapping to chromosomes 17p13.2 and 3q25.1, respectively. Both Profilin-1 and Profilin-2 are abundantly expressed in kidney. Profilin-1 is highly expressed in lung, liver, placenta and kidney while Profilin-2 is highly expressed in brain and skeletal muscle. In axonal and dendritic processes of mouse brain, Profilins co-localize with dynamin I and synapsin. Profilin may play a role in mediating cell adhesion. The overexpression of Profilin in endothelial cells results in increased adhesion to Fibronectin. In food allergy, plant Profilin is considered a pan-allergen. Case studies indicate individuals with allergies to various foods including celery, carrots, zucchini and peanuts are actually sensitive to the Profilin proteins in these foods.

## References

Note: This product is for in vitro research use only