

SMYD3 Rabbit mAb

Catalog No: #49647



Package Size: #49647-1 50ul #49647-2 100ul

Orders: [order@signalwayantibody.com](mailto:order@signalwayantibody.com)  
Support: [tech@signalwayantibody.com](mailto:tech@signalwayantibody.com)

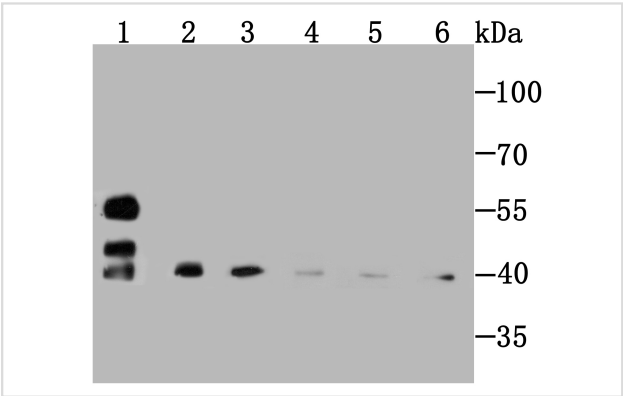
Description

Product Name	SMYD3 Rabbit mAb			
Host Species	Recombinant Rabbit			
Clonality	Monoclonal antibody			
Purification	ProA affinity purified			
Applications	WB, ICC/IF, IHC, IP, FC			
Species Reactivity	Hu, Ms, Rt			
Immunogen Description	Recombinant protein			
Other Names	bA74P14.1 (novel protein) antibody    bA74P14.1 antibody    FLJ21080 antibody    histone lysine N methyltransferase SMYD3 antibody    KMT3E antibody    MGC104324 antibody    SET and MYND domain containing 3 antibody    SET and MYND domain containing protein 3 antibody    SET and MYND domain-containing protein 3 antibody    SMYD 3 antibody    Smyd3 antibody    SMYD3 protein antibody    SMYD3_HUMAN antibody    Zinc finger MYND domain containing 1 antibody    Zinc finger MYND domain containing protein 1 antibody    Zinc finger MYND domain-containing protein 1 antibody    Zinc finger protein subfamily 3A MYND domain containing 1 antibody    Zinc finger protein, subfamily 3A (MYND domain containing), 1 antibody    ZMYND 1 antibody    ZMYND1 antibody    ZNFN3A1 antibody			
Accession No.	Swiss-Prot#:Q9H7B4			
Uniprot	Q9H7B4			
GeneID	64754;			
Formulation	1*TBS (pH7.4), 1%BSA, 40%Glycerol. Preservative: 0.05% Sodium Azide.			
Storage	Store at -20°C			

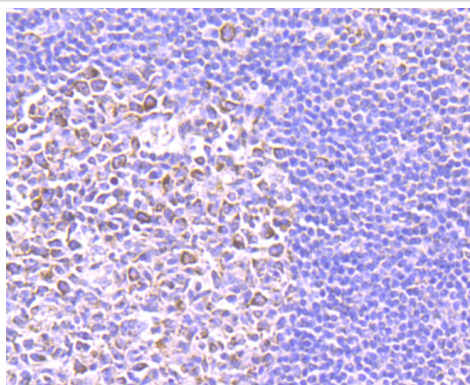
Application Details

WB: 1:500-1:2,000    IHC: 1:50-1:200    ICC/IF: 1:50-1:200FC: 1:50-1:100

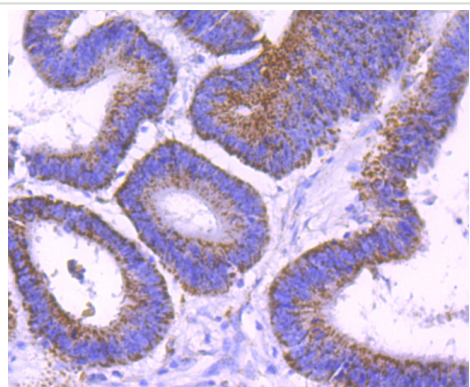
Images



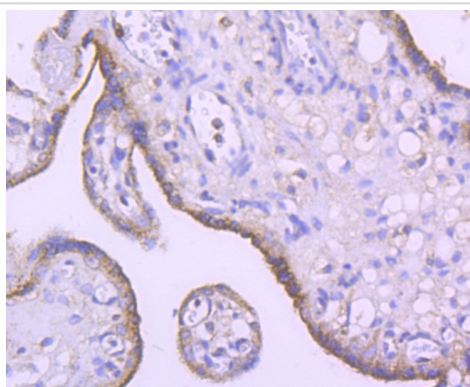
Western blot analysis of SMYD3 on different cell/tissue lysate using anti-Profilin 1 antibody at 1/1,000 dilution. Positive control is shown in Lane 1. Lane1: Rat kidney  
Lane2: PC-12  
Lane3: HeLa  
Lane4: Mouse spleen  
Lane5: NIH-3T3  
Lane6: Rat spleen



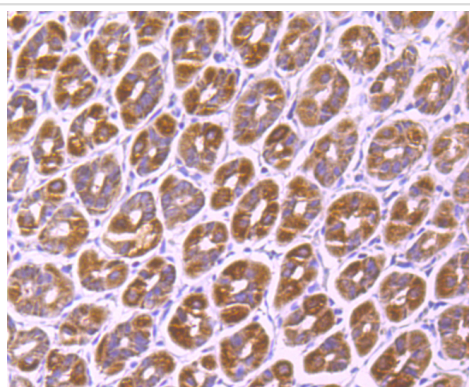
Immunohistochemical analysis of paraffin-embedded human tonsil tissue using anti-SMYD3 antibody. Counter stained with hematoxylin.



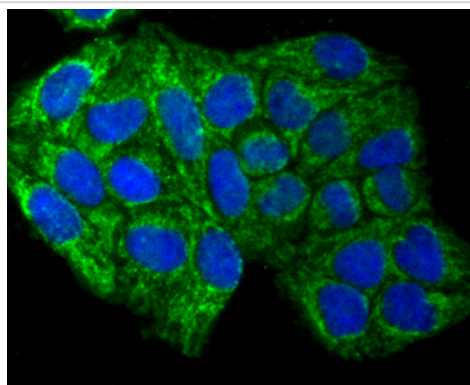
Immunohistochemical analysis of paraffin-embedded human colon cancer tissue using anti-SMYD3 antibody. Counter stained with hematoxylin.



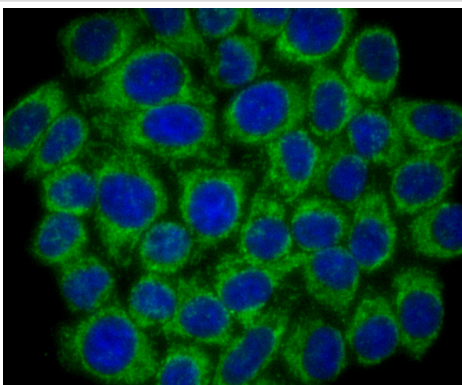
Immunohistochemical analysis of paraffin-embedded human placenta tissue using anti-SMYD3 antibody. Counter stained with hematoxylin.



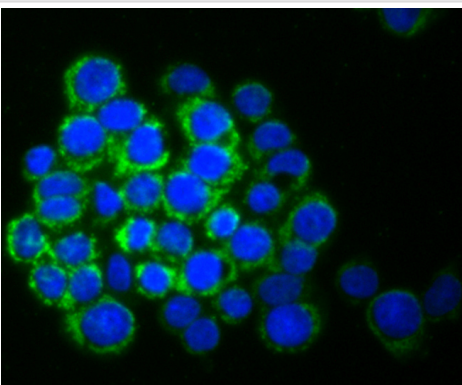
Immunohistochemical analysis of paraffin-embedded mouse stomach tissue using anti-SMYD3 antibody. Counter stained with hematoxylin.



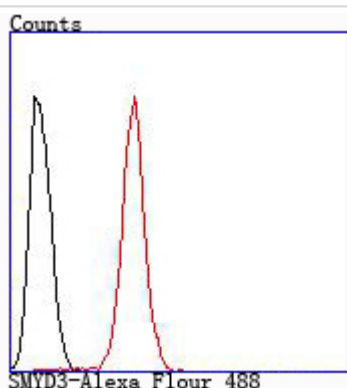
ICC staining SMYD3 in HeLa cells (green). The nuclear counter stain is DAPI (blue). Cells were fixed in paraformaldehyde, permeabilised with 0.25% Triton X100/PBS.



ICC staining SMYD3 in HepG2 cells (green). The nuclear counter stain is DAPI (blue). Cells were fixed in paraformaldehyde, permeabilised with 0.25% Triton X100/PBS.



ICC staining SMYD3 in LOVO cells (green). The nuclear counter stain is DAPI (blue). Cells were fixed in paraformaldehyde, permeabilised with 0.25% Triton X100/PBS.



Flow cytometric analysis of HeLa cells with SMYD3 antibody at 1/100 dilution (red) compared with an unlabelled control (cells without incubation with primary antibody; black).

## Background

Belongs to the histone-lysine methyltransferase family. Contains 1 MYND-type zinc finger. Contains 1 SET domain. Histones methyltransferase. Methylates 'Lys-4' of histone H3, inducing di- and tri-methylation, but not monomethylation. Plays an important role in transcriptional activation as a member of an RNA polymerase complex. Binds DNA containing 5'-CCCTCC- 3' or 5'-GAGGGG-3'.

## References

Note: This product is for in vitro research use only