

## PSMA1 Rabbit mAb

Catalog No: #49706



Package Size: #49706-1 50ul #49706-2 100ul

Orders: [order@signalwayantibody.com](mailto:order@signalwayantibody.com)Support: [tech@signalwayantibody.com](mailto:tech@signalwayantibody.com)

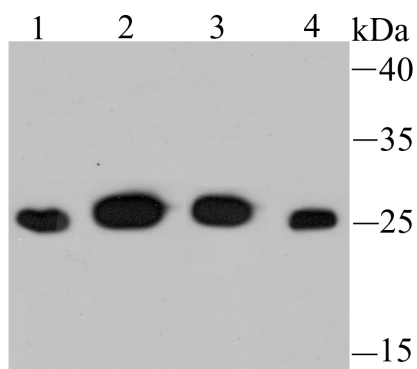
## Description

Product Name	PSMA1 Rabbit mAb
Host Species	Recombinant Rabbit
Clonality	Monoclonal antibody
Clone No.	JU66-24
Purification	ProA affinity purified
Applications	WB, ICC/IF, IHC, IP, FC
Species Reactivity	Hu, Ms, Rt
Immunogen Description	Recombinant protein
Other Names	30 kDa prosomal protein antibody HC 2 antibody HC2 antibody Macropain subunit C2 antibody Macropain subunit nu antibody MGC14542 antibody MGC14575 antibody MGC14751 antibody MGC1667 antibody MGC21459 antibody MGC22853 antibody MGC23915 antibody Multicatalytic endopeptidase complex subunit C2 antibody NU antibody PROS 30 antibody PROS-30 antibody PROS30 antibody Proteasome (prosome macropain) subunit alpha type 1 antibody Proteasome alpha 1 subunit antibody Proteasome component C2 antibody Proteasome nu chain antibody Proteasome subunit alpha type 1 antibody Proteasome subunit alpha type I antibody Proteasome subunit alpha type-1 antibody Proteasome subunit nu antibody Protein P30 33K antibody PSA1_HUMAN antibody PSC 2 antibody PSC2 antibody PSMA 1 antibody psmA1 antibody
Accession No.	Swiss-Prot#:P25786
Uniprot	P25786
GeneID	5682;
Calculated MW	30 kDa
Formulation	1*TBS (pH7.4), 1%BSA, 40%Glycerol. Preservative: 0.05% Sodium Azide.
Storage	Store at -20°C

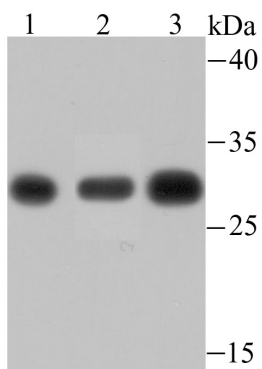
## Application Details

WB: 1:500-1:2,000 IHC: 1:50-1:200 ICC: 1:200-1:1,000 FC: 1:50-1:100

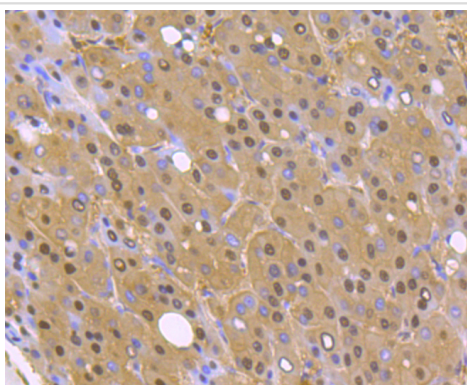
## Images



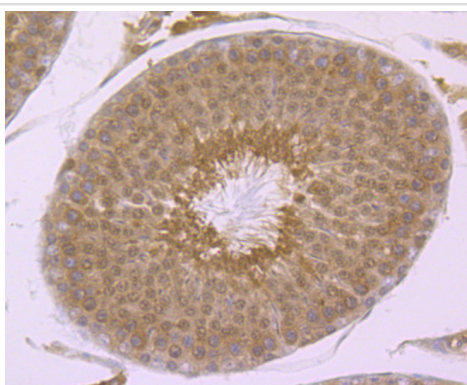
Western blot analysis of PSMA1 on different cell lysates using anti-PSMA1 antibody at 1/500 dilution. Positive control: Lane 1: Jurkat Lane 2: HeLa Lane 3: HepG2 Lane 4: 293



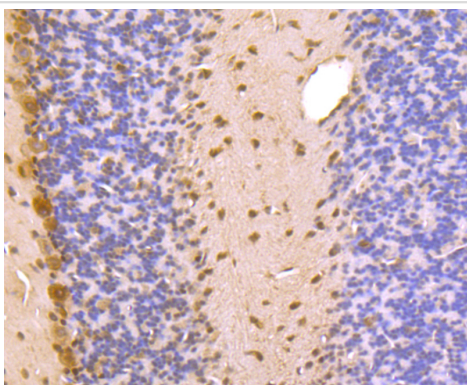
Western blot analysis of PSMA1 on different lysates using anti-PSMA1 antibody at 1/500 dilution. Positive control: Lane 1: PC-12 Lane 2: Mouse spleen tissue Lane 3: Rat spleen tissue



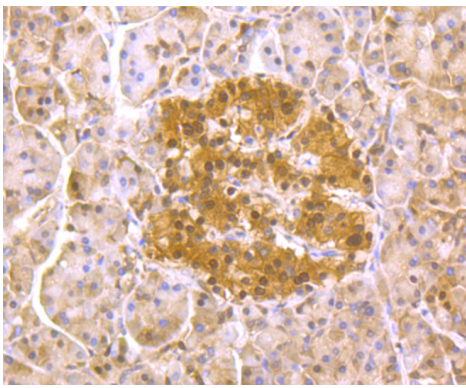
Immunohistochemical analysis of paraffin-embedded human liver cancer tissue using anti-PSMA1 antibody. Counter stained with hematoxylin.



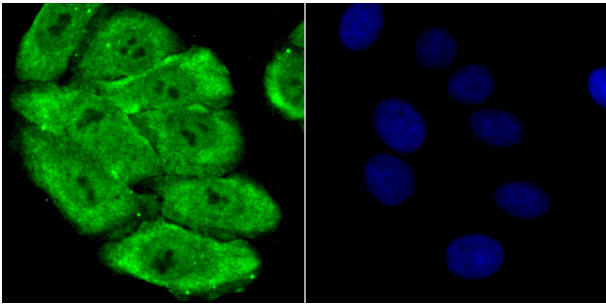
Immunohistochemical analysis of paraffin-embedded rat testis tissue using anti-PSMA1 antibody. Counter stained with hematoxylin.



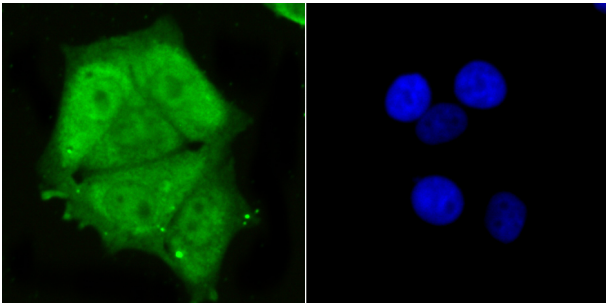
Immunohistochemical analysis of paraffin-embedded mouse cerebellum tissue using anti-PSMA1 antibody. Counter stained with hematoxylin.



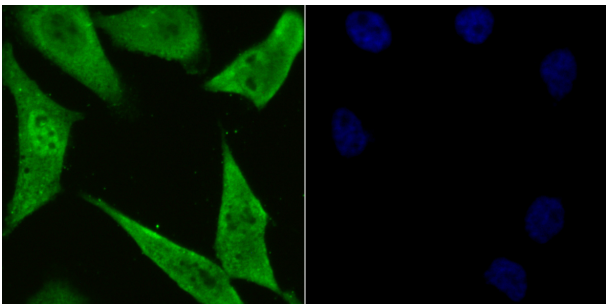
Immunohistochemical analysis of paraffin-embedded human pancreas tissue using anti-PSMA1 antibody. Counter stained with hematoxylin.



ICC staining PSMA1 in HepG2 cells (green). The nuclear counter stain is DAPI (blue). Cells were fixed in paraformaldehyde, permeabilised with 0.25% Triton X100/PBS.



ICC staining PSMA1 in MCF-7 cells (green). The nuclear counter stain is DAPI (blue). Cells were fixed in paraformaldehyde, permeabilised with 0.25% Triton X100/PBS.



ICC staining PSMA1 in PC-3M cells (green). The nuclear counter stain is DAPI (blue). Cells were fixed in paraformaldehyde, permeabilised with 0.25% Triton X100/PBS.

## Background

The proteasome is a multicatalytic proteinase complex which is characterized by its ability to cleave peptides with Arg, Phe, Tyr, Leu, and Glu adjacent to the leaving group at neutral or slightly basic pH. The proteasome has an ATP-dependent proteolytic activity. Mediates the lipopolysaccharide-induced signal transduction in the macrophage proteasome. Might be involved in the anti-inflammatory response of macrophages during the interaction with *C.albicans* heat-inactivated cells.

## References

---

Note: This product is for in vitro research use only