

LOX Rabbit mAb

Catalog No: #49717



Package Size: #49717-1 50ul #49717-2 100ul

Orders: [order@signalwayantibody.com](mailto:order@signalwayantibody.com)  
Support: [tech@signalwayantibody.com](mailto:tech@signalwayantibody.com)

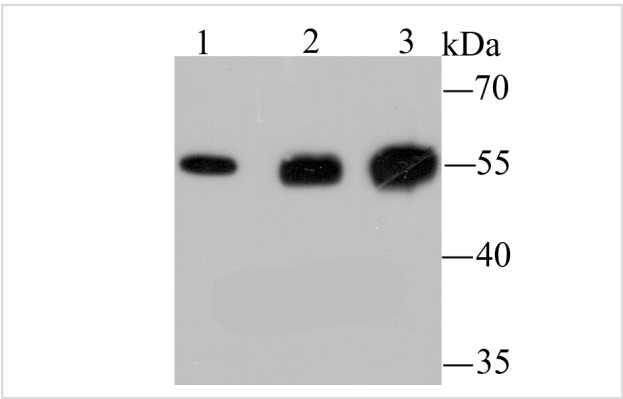
Description

Product Name	LOX Rabbit mAb
Host Species	Recombinant Rabbit
Clonality	Monoclonal antibody
Clone No.	JU30-23
Purification	ProA affinity purified
Applications	WB,ICC,IHC,FC
Species Reactivity	Hu, Ms, Rt, Zebrafish
Immunogen Description	Recombinant protein
Other Names	lox antibody LYOX antibody LYOX_HUMAN antibody Lysyl oxidase antibody MGC105112 antibody Protein lysine 6 oxidase antibody Protein-lysine 6-oxidase antibody
Accession No.	Swiss-Prot#:P28300
Uniprot	P28300
GeneID	4015;
Calculated MW	50 kDa
Formulation	1*TBS (pH7.4), 1%BSA, 40%Glycerol. Preservative: 0.05% Sodium Azide.
Storage	Store at -20°C

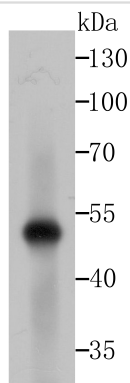
Application Details

WB: 1:500-1:2,000    IHC: 1:50-1:100    ICC: 1:100-1:500FC: 1:50-1:100

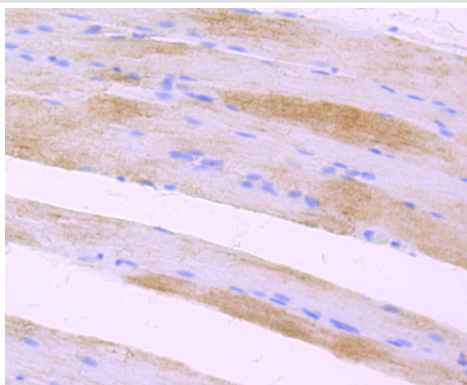
Images



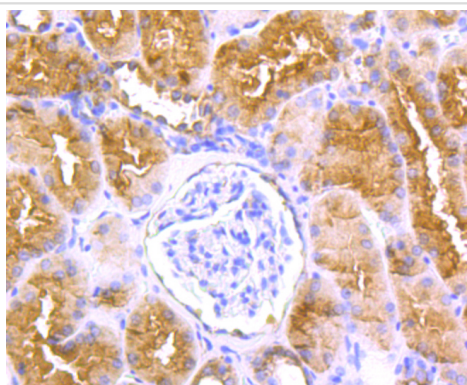
Western blot analysis of LOX on different lysates using anti-LOX antibody at 1/1,000 dilution. Positive control: Lane 1: Jurkat    Lane 2: Mouse brain Lane 3: Human fetal brain



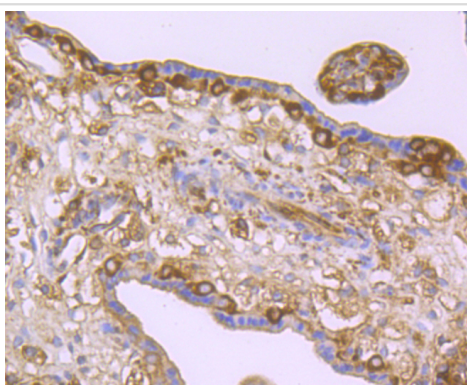
Western blot analysis of LOX on Zebrafish tissue lysates using anti-LOX antibody at 1/1,000 dilution.



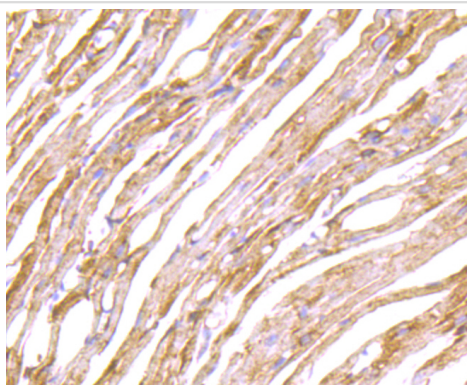
Immunohistochemical analysis of paraffin-embedded rat skeletal muscle tissue using anti-LOX antibody. Counter stained with hematoxylin.



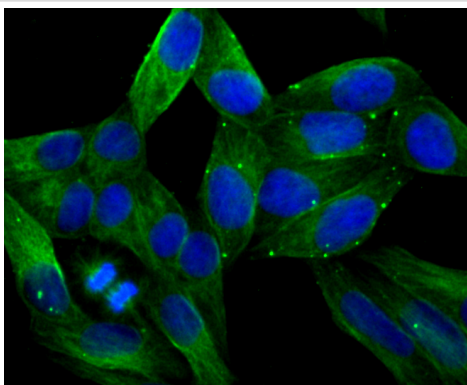
Immunohistochemical analysis of paraffin-embedded human kidney tissue using anti-LOX antibody. Counter stained with hematoxylin.



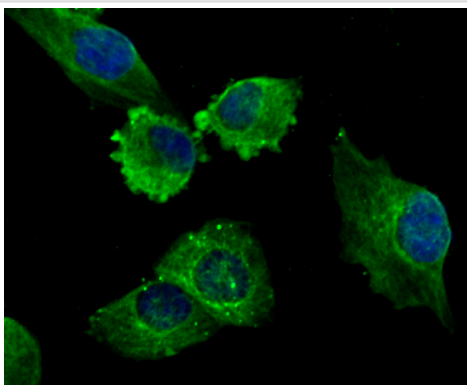
Immunohistochemical analysis of paraffin-embedded human placenta tissue using anti-LOX antibody. Counter stained with hematoxylin.



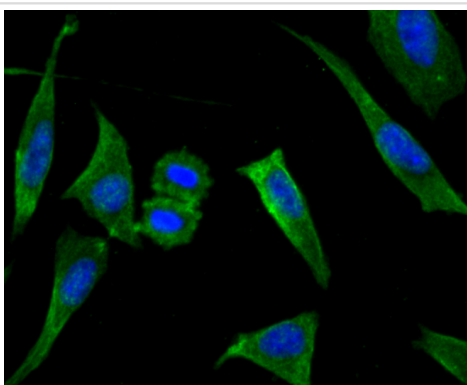
Immunohistochemical analysis of paraffin-embedded mouse heart tissue using anti-LOX antibody. Counter stained with hematoxylin.



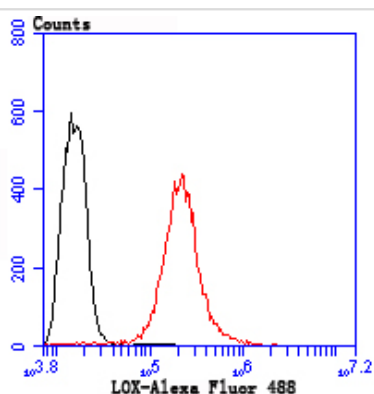
ICC staining LOX in HeLa cells (green). The nuclear counter stain is DAPI (blue). Cells were fixed in paraformaldehyde, permeabilised with 0.25% Triton X100/PBS.



ICC staining LOX in HUVEC cells (green). The nuclear counter stain is DAPI (blue). Cells were fixed in paraformaldehyde, permeabilised with 0.25% Triton X100/PBS.



ICC staining LOX in SH-SY5Y cells (green). The nuclear counter stain is DAPI (blue). Cells were fixed in paraformaldehyde, permeabilised with 0.25% Triton X100/PBS.



Flow cytometric analysis of HeLa cells with LOX antibody at 1/100 dilution (red) compared with an unlabelled control (cells without incubation with primary antibody; black). Alexa Fluor 488-conjugated goat anti rabbit IgG was used as the secondary antibody.

## Background

The lysyl oxidase family of extracellular proteins includes LOX and four LOX-like enzymes, which are responsible for the deamination of peptidyl lysine residues of collagens and elastin. They also catalyze inter- and intra-crosslinking reactions. Overexpression of LOX may cause severe fibrotic degeneration due to its high resistance to degradative enzymes. Procollagen C-proteinase activity processes LOX from a precursor protein to a mature form. Activation of LOX occurs in normal developing and adult skin, and alterations in LOX expression and activity are associated with skin aging and senescence. LOX is crucial for development of the cardiovascular and respiratory systems. In addition, LOX plays a role in cancer, wound healing, as well as cell motility, chemotaxis and differentiation.

## References

---

Note: This product is for in vitro research use only