

ALDH1L1 Rabbit mAb

Catalog No: #49750



Package Size: #49750-1 50ul #49750-2 100ul

Orders: order@signalwayantibody.com
Support: tech@signalwayantibody.com

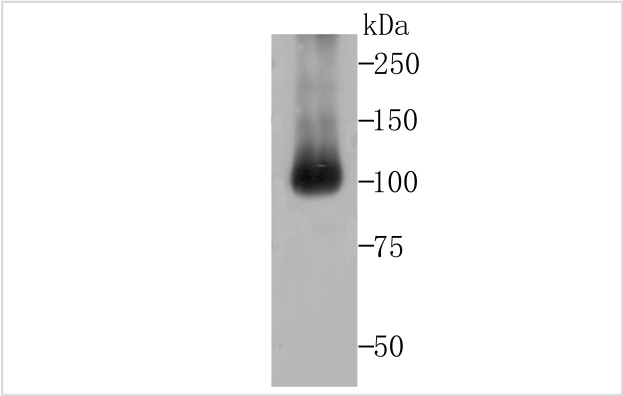
Description

Product Name	ALDH1L1 Rabbit mAb
Host Species	Recombinant Rabbit
Clonality	Monoclonal antibody
Clone No.	JU53-54
Purification	ProA affinity purified
Applications	WB,IHC
Species Reactivity	Hu, Ms, Rt
Immunogen Description	Recombinant protein
Other Names	10 formyltetrahydrofolate dehydrogenase antibody 10 FTHFDH antibody 10-formyltetrahydrofolate dehydrogenase antibody 10-FTHFDH antibody AL1L1_HUMAN antibody Aldehyde dehydrogenase 1 family member L1 antibody Aldehyde dehydrogenase family 1 member L1 antibody aldh1l1 antibody Cytosolic 10-formyltetrahydrofolate dehydrogenase antibody DKFZp781N0997 antibody EC 1.5.1.6 antibody FDH antibody formyltetrahydrofolate dehydrogenase antibody FTHFD antibody OTTHUMP00000155221 antibody OTTHUMP00000214696 antibody OTTHUMP00000214700 antibody OTTHUMP00000222724 antibody
Accession No.	Swiss-Prot#:O75891
Uniprot	O75891
GeneID	10840;
Calculated MW	99 kDa
Formulation	1*TBS (pH7.4), 1%BSA, 40%Glycerol. Preservative: 0.05% Sodium Azide.
Storage	Store at -20°C

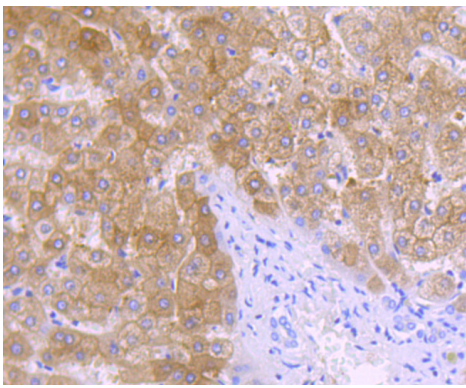
Application Details

WB: 1:500-1:2,000IHC: 1:50-1:200

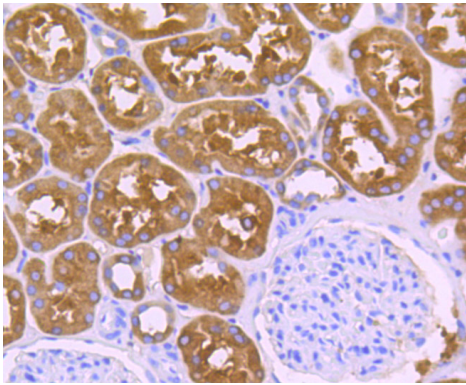
Images



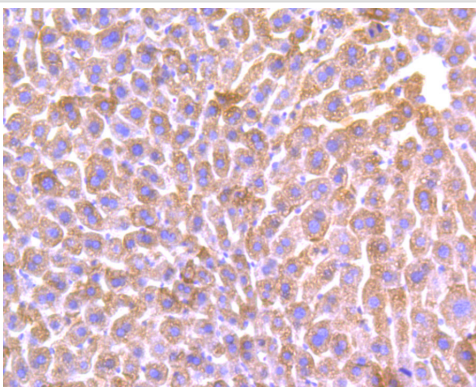
Western blot analysis of ALDH1L1 on mouse liver tissue lysates using anti-ALDH1L1 antibody at 1/500 dilution.



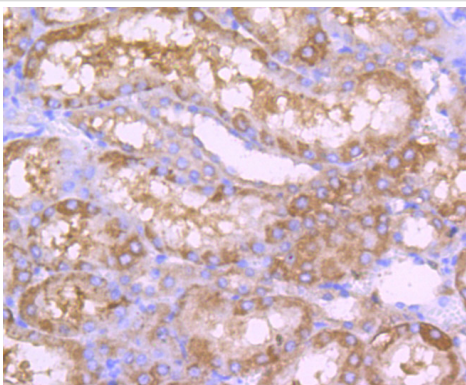
Immunohistochemical analysis of paraffin-embedded human liver tissue using anti-ALDH1L1 antibody. Counter stained with hematoxylin.



Immunohistochemical analysis of paraffin-embedded human kidney tissue using anti-ALDH1L1 antibody. Counter stained with hematoxylin.



Immunohistochemical analysis of paraffin-embedded mouse liver tissue using anti-ALDH1L1 antibody. Counter stained with hematoxylin.



Immunohistochemical analysis of paraffin-embedded rat kidney tissue using anti-ALDH1L1 antibody. Counter stained with hematoxylin.

Background

10-formyltetrahydrofolate dehydrogenase is an enzyme that in humans is encoded by the ALDH1L1 gene. The protein encoded by this gene catalyzes the conversion of 10-formyltetrahydrofolate, NADP, and water to tetrahydrofolate, NADPH, and carbon dioxide. The encoded protein belongs to the aldehyde dehydrogenase family and is responsible for formate oxidation in vivo. Deficiencies in this gene can result in an accumulation of formate and subsequent methanol poisoning.

References

Note: This product is for in vitro research use only