

RPS19 Rabbit mAb

Catalog No: #49778



Package Size: #49778-1 50ul #49778-2 100ul

Orders: order@signalwayantibody.com
Support: tech@signalwayantibody.com

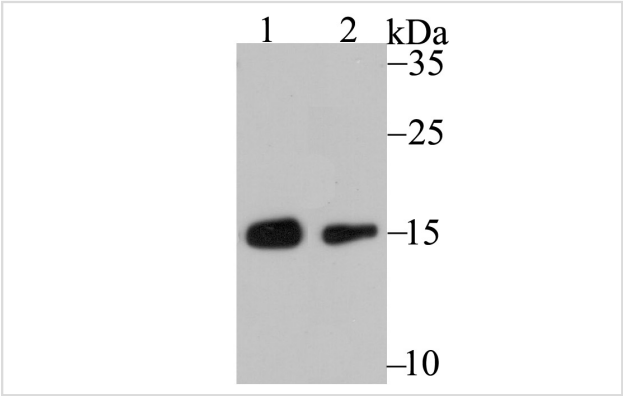
Description

Product Name	RPS19 Rabbit mAb				
Host Species	Recombinant Rabbit				
Clonality	Monoclonal antibody				
Clone No.	JU33-43				
Purification	ProA affinity purified				
Applications	WB,IHC,IP				
Species Reactivity	Hu, Ms, Rt				
Immunogen Description	Recombinant protein				
Other Names	40S ribosomal protein S19 antibody DBA antibody DBA1 antibody HGNC:10402 antibody Ribosomal protein S19 antibody rps19 antibody RS19_HUMAN antibody S19 antibody				
Accession No.	Swiss-Prot#:P39019				
Uniprot	P39019				
GeneID	6223;				
Calculated MW	16 kDa				
Formulation	1*TBS (pH7.4), 1%BSA, 40%Glycerol. Preservative: 0.05% Sodium Azide.				
Storage	Store at -20°C				

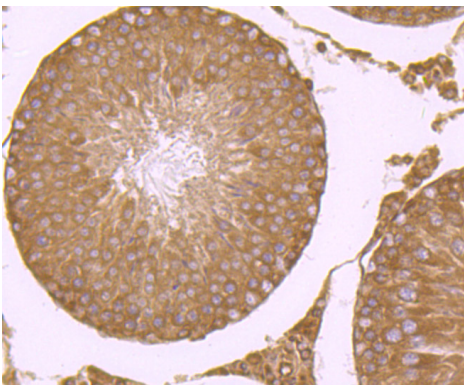
Application Details

WB: 1:500-1:1,000 IHC: 1:50-1:200IP: 1:10-1:50

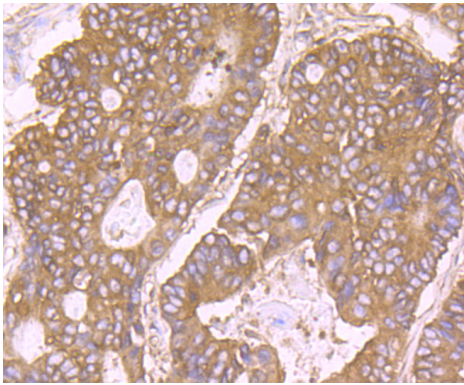
Images



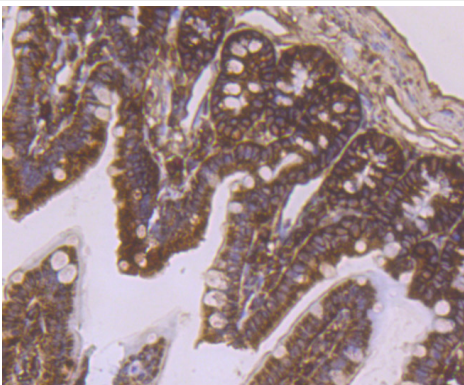
Western blot analysis of RPS19 on HeLa cell using anti-RPS19 antibody at 1/500 dilution. Positive control: Lane 1: CRC
Lane 2: MCF-7



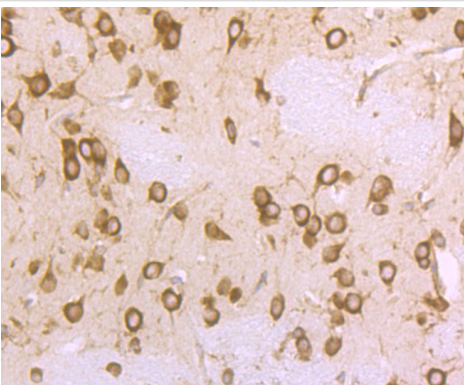
Immunohistochemical analysis of paraffin-embedded rat testis tissue using anti-RPS19 antibody. Counter stained with hematoxylin.



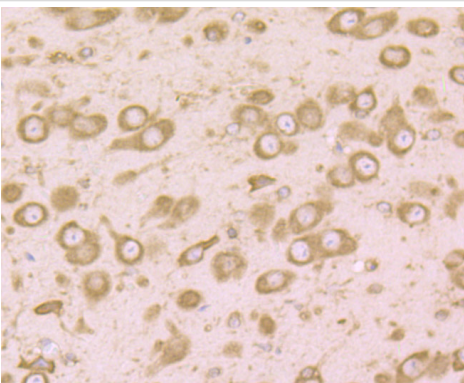
Immunohistochemical analysis of paraffin-embedded human colon cancer tissue using anti-RPS19 antibody. Counter stained with hematoxylin.



Immunohistochemical analysis of paraffin-embedded mouse colon tissue using anti-RPS19 antibody. Counter stained with hematoxylin.



Immunohistochemical analysis of paraffin-embedded rat brain tissue using anti-RPS19 antibody. Counter stained with hematoxylin.



Immunohistochemical analysis of paraffin-embedded mouse brain tissue using anti-RPS19 antibody. Counter stained with hematoxylin.

Background

Ribosomal subunits are synthesized in the nucleus and mature 40S and 60S subunits are exported stoichiometrically into the cytoplasm. Together these subunits are composed of four RNA species and approximately 80 structurally distinct proteins. Ribosomal proteins have the ability to pass through the nuclear envelope in the native state, making them the largest of the structures accommodated by the nuclear pore complexes. The nuclear export of ribosomal subunits is a unidirectional, saturable and energy-dependent process. Ribosomal Protein S19 (RPS19) is a 145 amino acids protein expressed in various human adult tissues, including bone marrow, peripheral blood, spleen, liver and nonhematopoietic tissues. RPS19 expression decreases during terminal erythroid differentiation; a deficiency of RPS19 blocks proliferation of immature erythroid progenitor cells altogether. Mutations in the RPS19 gene are linked with Diamond-Blackfan anemia (DBA), a congenital, hypoplastic, red cell aplasia that occasionally presents with physical anomalies.

References

Note: This product is for in vitro research use only