

SET Rabbit mAb

Catalog No: #49800



Package Size: #49800-1 50ul #49800-2 100ul

Orders: order@signalwayantibody.com

Support: tech@signalwayantibody.com

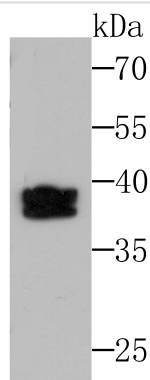
Description

Product Name	SET Rabbit mAb
Host Species	Recombinant Rabbit
Clonality	Monoclonal antibody
Clone No.	JB60-34
Purification	ProA affinity purified
Applications	WB, ICC, IF, IHC, IP, FC
Species Reactivity	Hu, Ms, Rt
Immunogen Description	Recombinant protein
Other Names	2PP2A antibody HLA DR associated protein II antibody HLA-DR-associated protein II antibody I 2PP2A antibody I-2PP2A antibody I2PP2A antibody IGAAD antibody Inhibitor of granzyme A activated DNase antibody Inhibitor of granzyme A-activated DNase antibody Inhibitor of GzmA-activated DNase antibody inhibitor-2 of protein phosphatase-2A antibody IPP2A2 antibody PHAPII antibody Phosphatase 2A inhibitor I2PP2A antibody protein phosphatase type 2A inhibitor antibody Protein SET antibody Set antibody SET nuclear oncogene antibody SET translocation antibody SET translocation (myeloid leukemia-associated) antibody SET_HUMAN antibody TAF I antibody TAF IBETA antibody TAF-I antibody TAFI antibody Template activating factor I antibody Template-activating factor I antibody Template-Activating Factor-I, chromatin remodelling factor antibody
Accession No.	Swiss-Prot#:Q01105
Uniprot	Q01105
GeneID	6418;
Calculated MW	37 kDa
Formulation	1*TBS (pH7.4), 1%BSA, 40%Glycerol. Preservative: 0.05% Sodium Azide.
Storage	Store at -20°C

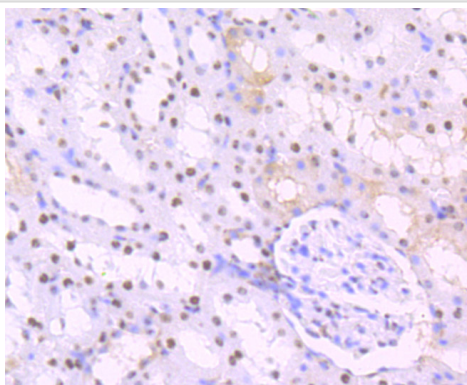
Application Details

WB: 1:500-1:2,000 IHC: 1:50-1:200 ICC: 1:50-1:200 IP: 1:10-1:50 FC: 1:50-1:100

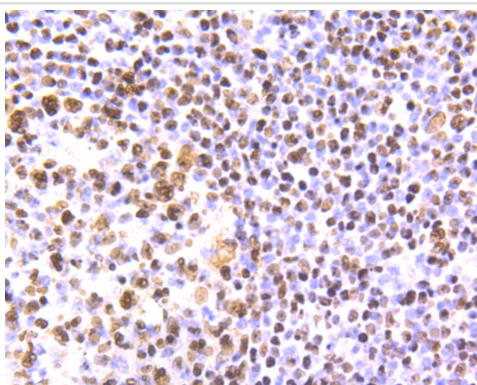
Images



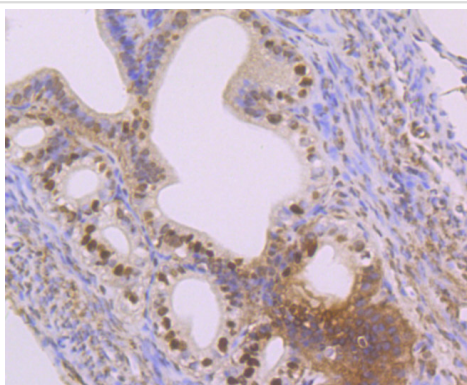
Western blot analysis of SET on K562 cell lysates using anti-SET at 1/500 dilution.



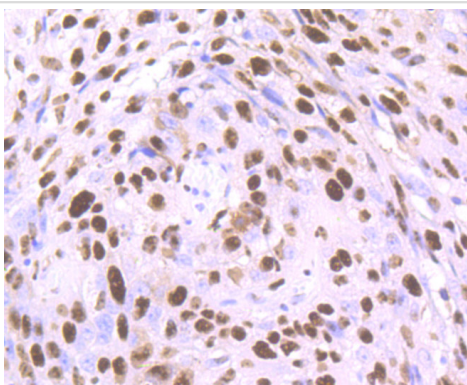
Immunohistochemical analysis of paraffin-embedded rat kidney tissue using anti-SET antibody. Counter stained with hematoxylin.



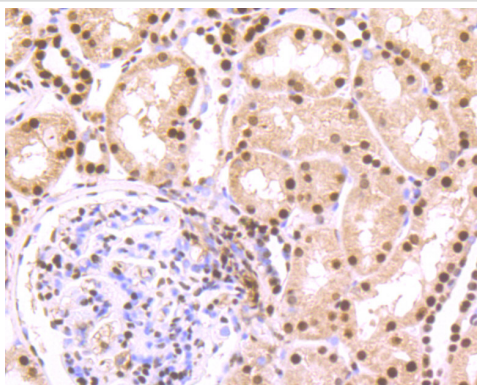
Immunohistochemical analysis of paraffin-embedded human tonsil tissue using anti-SET antibody. Counter stained with hematoxylin.



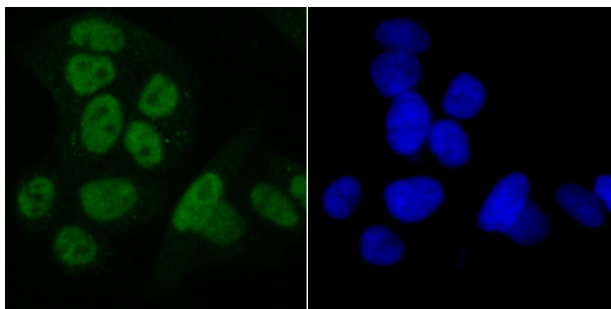
Immunohistochemical analysis of paraffin-embedded mouse fallopian tube tissue using anti-SET antibody. Counter stained with hematoxylin.



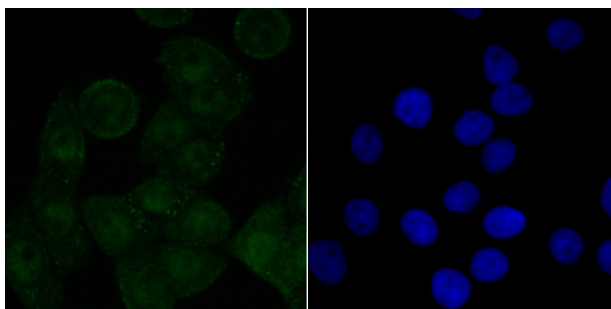
Immunohistochemical analysis of paraffin-embedded human lung cancer tissue using anti-SET antibody. Counter stained with hematoxylin.



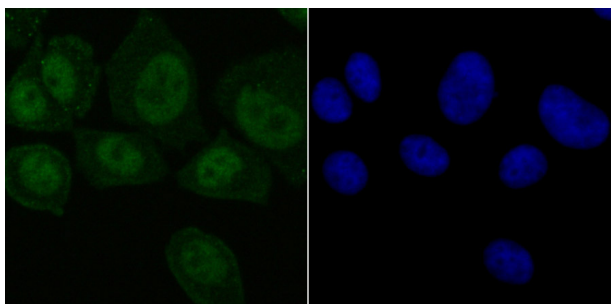
Immunohistochemical analysis of paraffin-embedded human kidney tissue using anti-SET antibody. Counter stained with hematoxylin.



ICC staining SET in HeLa cells (green). The nuclear counter stain is DAPI (blue). Cells were fixed in paraformaldehyde, permeabilised with 0.25% Triton X100/PBS.



ICC staining SET in LOVO cells (green). The nuclear counter stain is DAPI (blue). Cells were fixed in paraformaldehyde, permeabilised with 0.25% Triton X100/PBS.



ICC staining SET in MCF-7 cells (green). The nuclear counter stain is DAPI (blue). Cells were fixed in paraformaldehyde, permeabilised with 0.25% Triton X100/PBS.

Background

Multitasking protein, involved in apoptosis, transcription, nucleosome assembly and histone chaperoning. Isoform 2 anti-apoptotic activity is mediated by inhibition of the GZMA-activated DNase, NME1. In the course of cytotoxic T-lymphocyte (CTL)-induced apoptosis, GZMA cleaves SET, disrupting its binding to NME1 and releasing NME1 inhibition. Isoform 1 and isoform 2 are potent inhibitors of protein phosphatase 2A. Isoform 1 and isoform 2 inhibit EP300/CREBBP and PCAF-mediated acetylation of histones (HAT) and nucleosomes, most probably by masking the accessibility of lysines of histones to the acetylases. The predominant target for inhibition is histone H4. HAT inhibition leads to silencing of HAT-dependent transcription and prevents active demethylation of DNA. Both isoforms stimulate DNA replication of the adenovirus genome complexed with viral core proteins; however, isoform 2 specific activity is higher.

References

Note: This product is for in vitro research use only