

VPS26 Rabbit mAb

Catalog No: #49803



Package Size: #49803-1 50ul #49803-2 100ul

Orders: order@signalwayantibody.com

Support: tech@signalwayantibody.com

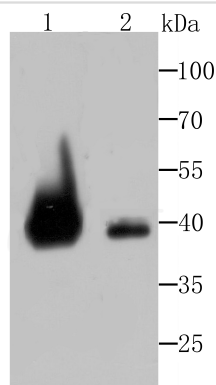
Description

Product Name	VPS26 Rabbit mAb
Host Species	Recombinant Rabbit
Clonality	Monoclonal antibody
Clone No.	JB93-41
Purification	ProA affinity purified
Applications	WB,IHC,IP
Species Reactivity	Hu, Ms, Rt
Immunogen Description	Recombinant protein
Other Names	FLJ12930 antibody HB 58 antibody HB58 antibody Hbeta 58 antibody Hbeta 58 homolog antibody Hbeta58 antibody Hbeta58 homolog antibody hVPS 26 antibody hVPS26 antibody MGC94168 antibody PEP 8A antibody PEP8A antibody Vacuolar protein sorting 26 A antibody Vacuolar protein sorting 26 antibody Vacuolar protein sorting 26 homolog A antibody Vacuolar protein sorting 26 homolog A S. pombe antibody Vacuolar protein sorting 26 homolog A yeast antibody Vacuolar protein sorting 26 yeast antibody Vacuolar protein sorting 26 yeast homolog antibody Vacuolar protein sorting 26A antibody Vacuolar protein sorting associated protein 26A antibody Vacuolar protein sorting-associated protein 26A antibody Vesicle protein sorting 26 antibody Vesicle protein sorting 26A antibody VP26A_HUMAN antibody VPS 26 antibody VPS 26A antibody VPS26A antibody
Accession No.	Swiss-Prot#:O75436
Uniprot	O75436
GeneID	9559;
Calculated MW	38 kDa
Formulation	1*TBS (pH7.4), 1%BSA, 40%Glycerol. Preservative: 0.05% Sodium Azide.
Storage	Store at -20°C

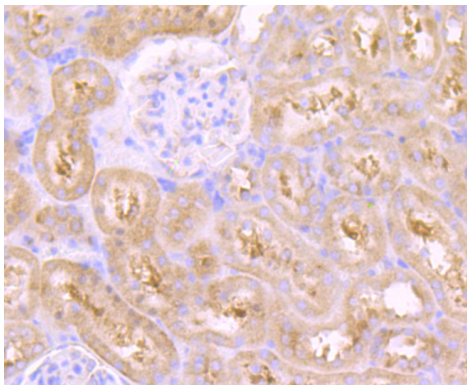
Application Details

WB: 1:500-1:2,000 IHC: 1:50-1:200IP: 1:10-1:50

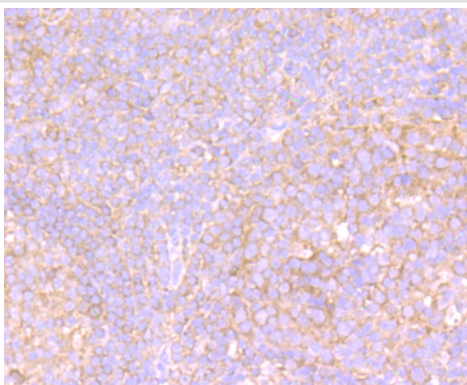
Images



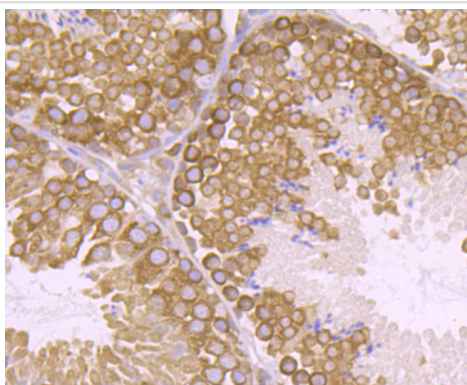
Western blot analysis of VPS26 on different cell lysates using anti-VPS26 at 1/500 dilution. Positive control
Line 1: Rat kidney tissue Line 2: A431



Immunohistochemical analysis of paraffin-embedded rat kidney tissue using anti-VPS26 antibody. Counter stained with hematoxylin.



Immunohistochemical analysis of paraffin-embedded human tonsil tissue using anti-VPS26 antibody. Counter stained with hematoxylin.



Immunohistochemical analysis of paraffin-embedded mouse testis tissue using anti-VPS26 antibody. Counter stained with hematoxylin.

Background

Acts as component of the retromer cargo-selective complex (CSC). The CSC is believed to be the core functional component of retromer or respective retromer complex variants acting to prevent missorting of selected transmembrane cargo proteins into the lysosomal degradation pathway. The recruitment of the CSC to the endosomal membrane involves RAB7A and SNX3. The SNX-BAR retromer mediates retrograde transport of cargo proteins from endosomes to the trans-Golgi network (TGN) and is involved in endosome-to-plasma membrane transport for cargo protein recycling. The SNX3-retromer mediates the retrograde endosome-to-TGN transport of WLS distinct from the SNX-BAR retromer pathway. Required for retrograde transport of lysosomal enzyme receptor IGF2R. Required to regulate transcytosis of the polymeric immunoglobulin receptor (pIgR-pIgA). Required for the endosomal localization of WASHC2A (indicative for the WASH complex). Required for the endosomal localization of TBC1D5.

Mediates retromer cargo recognition of SORL1 and is involved in trafficking of SORL1 implicated in sorting and processing of APP. Involved in retromer-independent lysosomal sorting of F2R. Involved in recycling of ADRB2. Enhances the affinity of SNX27 for PDZ-binding motifs in cargo proteins.

References

Note: This product is for in vitro research use only