

STIP1 Rabbit mAb

Catalog No: #49844



Package Size: #49844-1 50ul #49844-2 100ul

Orders: [order@signalwayantibody.com](mailto:order@signalwayantibody.com)  
Support: [tech@signalwayantibody.com](mailto:tech@signalwayantibody.com)

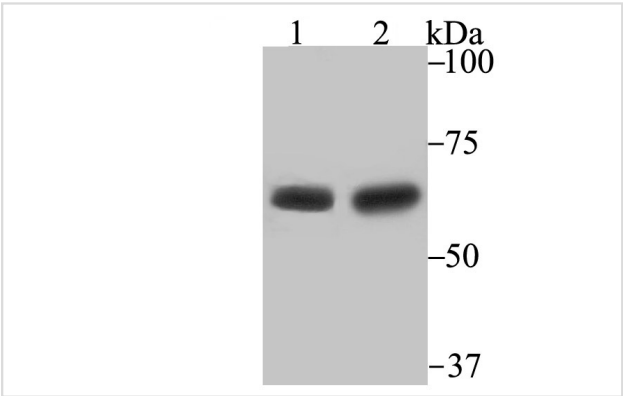
Description

Product Name	STIP1 Rabbit mAb
Host Species	Recombinant Rabbit
Clonality	Monoclonal antibody
Clone No.	JB95-38
Purification	ProA affinity purified
Applications	WB,IHC,FC,IP,ICC
Species Reactivity	Hu, Ms, Rt
Immunogen Description	Recombinant protein
Other Names	Epididymis secretory sperm binding protein Li 94n antibody    HEL S 94n antibody    Hop antibody Hsc70/Hsp90 organizing protein antibody    Hsc70/Hsp90-organizing protein antibody    IEF SSP 3521 antibody NY REN 11 antigen antibody    P60 antibody    Renal carcinoma antigen NY-REN-11 antibody STI1 antibody    STI1L antibody    STIP1 antibody    STIP1_HUMAN antibody    Stress induced phosphoprotein 1 antibody Stress-induced-phosphoprotein 1 antibody    Transformation sensitive protein IEF SSP 3521 antibody    Transformation-sensitive protein IEF SSP 3521 antibody
Accession No.	Swiss-Prot#:P31948
Uniprot	P31948
GeneID	10963;
Calculated MW	63 kDa
Formulation	1*TBS (pH7.4), 1%BSA, 40%Glycerol. Preservative: 0.05% Sodium Azide.
Storage	Store at -20°C

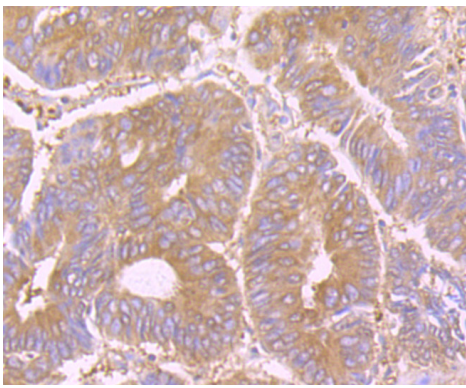
Application Details

WB: 1:500-1:1,000 IHC: 1:50-1:200 ICC: 1:50 FC: 1:50-1:100

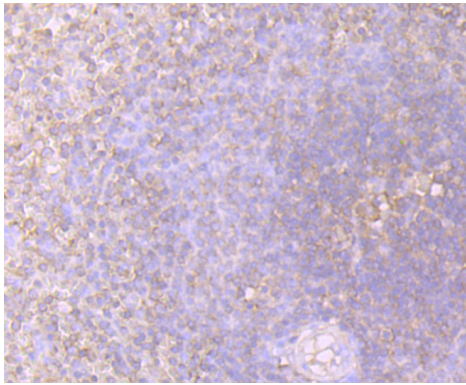
Images



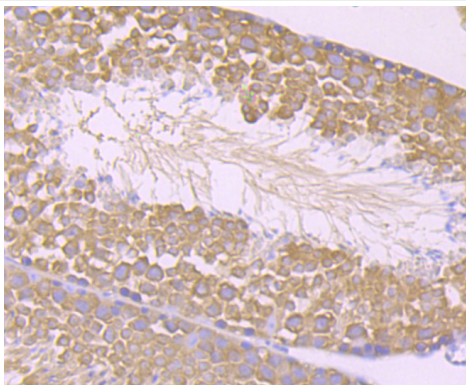
Western blot analysis of STIP1 on Mouse testis and Rat testis lysates using anti-STIP1 antibody at 1/500 dilution.



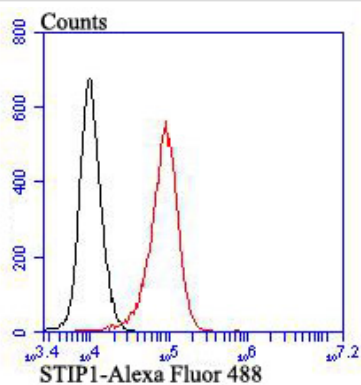
Immunohistochemical analysis of paraffin-embedded human colon cancer tissue using anti-STIP1 antibody. Counter stained with hematoxylin.



Immunohistochemical analysis of paraffin-embedded human spleen tissue using anti-STIP1 antibody. Counter stained with hematoxylin.



Immunohistochemical analysis of paraffin-embedded mouse testis tissue using anti-STIP1 antibody. Counter stained with hematoxylin.



Flow cytometric analysis of K562 cells with STIP1 antibody at 1/100 dilution (red) compared with an unlabelled control (cells without incubation with primary antibody; black). Alexa Fluor 488-conjugated goat anti rabbit IgG was used as the secondary antibody.

## Background

Stress-induced-phosphoprotein 1 (STI1) functions as a co-chaperone for HSP70 and HSP90 during heat shock response. STI1 exists as either a monomer or a dimer, and this conformational flexibility facilitates its function in organizing HSP70/HSP90. HSP90 acts as an ATPase, and requires the recruitment of client proteins and proper conformation to function. STI1 acts as a "scaffold" for client protein recruitment to the relaxed, ADP-bound conformation of HSP90, thus suppressing ATP turnover during the loading phase and allowing proper function.

## References

---

---

Note: This product is for in vitro research use only