

Phospho-Creb (S133) Rabbit mAb

Catalog No: #13435



Package Size: #13435-1 50ul #13435-2 100ul

Orders: order@signalwayantibody.com
Support: tech@signalwayantibody.com

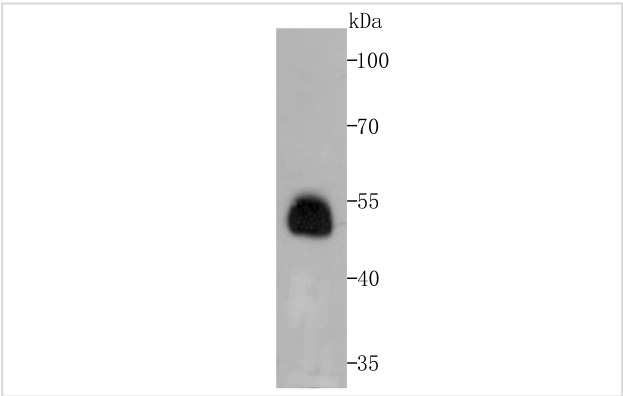
Description

Product Name	Phospho-Creb (S133) Rabbit mAb
Host Species	Rabbit
Clonality	Monoclonal
Clone No.	JB25-40
Purification	ProA affinity purified
Applications	WB,ICC,IF,IHC,IP,FC
Species Reactivity	Hu, Ms
Immunogen Description	Synthetic phospho-peptide corresponding to residues surrounding Ser133 of human Creb.
Other Names	Active transcription factor CREB antibody cAMP response element binding protein 1 antibody cAMP response element binding protein antibody cAMP responsive element binding protein 1 antibody cAMP-responsive element-binding protein 1 antibody CREB antibody CREB-1 antibody CREB1 antibody CREB1_HUMAN antibody Cyclic AMP-responsive element-binding protein 1 antibody MGC9284 antibody OTTHUMP00000163864 antibody OTTHUMP00000163865 antibody OTTHUMP00000206660 antibody OTTHUMP00000206662 antibody OTTHUMP00000206667 antibody Transactivator protein antibody
Accession No.	Swiss-Prot#:P16220
Uniprot	P16220
GeneID	1385;
Calculated MW	Predicted band size 37 kDa
Formulation	1*TBS (pH7.4), 1%BSA, 40%Glycerol. Preservative: 0.05% Sodium Azide.
Storage	Store at -20°C

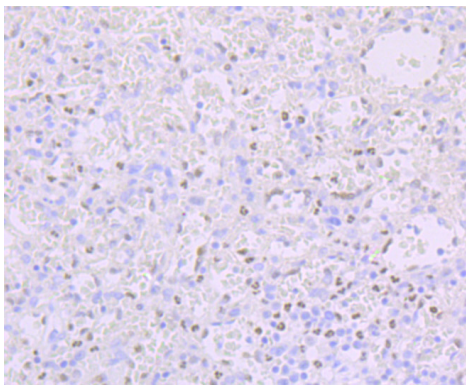
Application Details

WB: 1:500-1:2,000 IHC: 1:50-1:200 ICC: 1:50-1:100IP: 1:10-1:50FC: 1:50-1:100

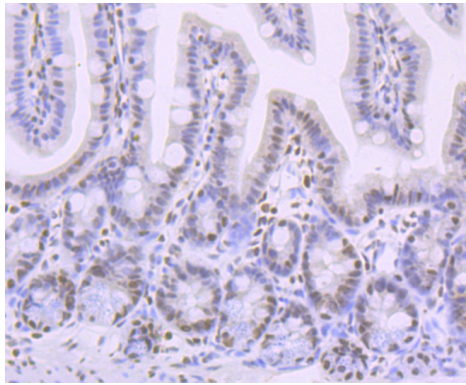
Images



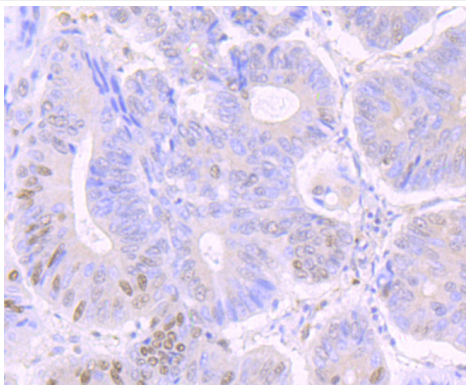
Western blot analysis of Phospho-Creb (S133) on human colon tissue lysates using anti-Phospho-Creb (S133) antibody at 1/500 dilution.



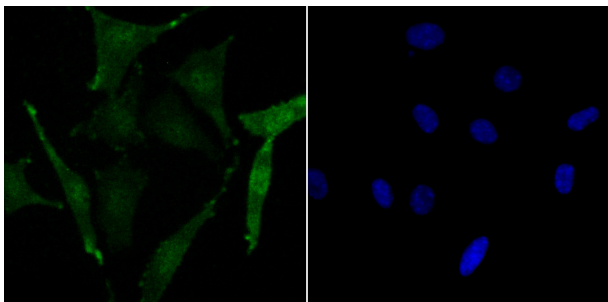
Immunohistochemical analysis of paraffin-embedded human spleen tissue using anti-Phospho-Creb (S133) antibody. Counter stained with hematoxylin.



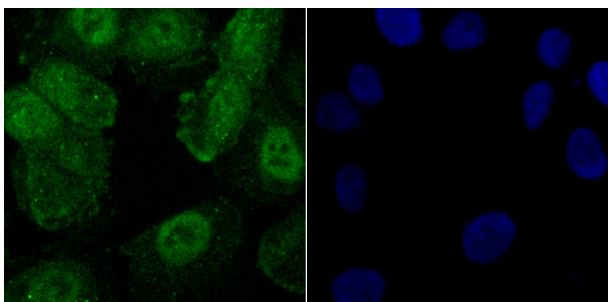
Immunohistochemical analysis of paraffin-embedded mouse colon tissue using anti-Phospho-Creb (S133) antibody. Counter stained with hematoxylin.



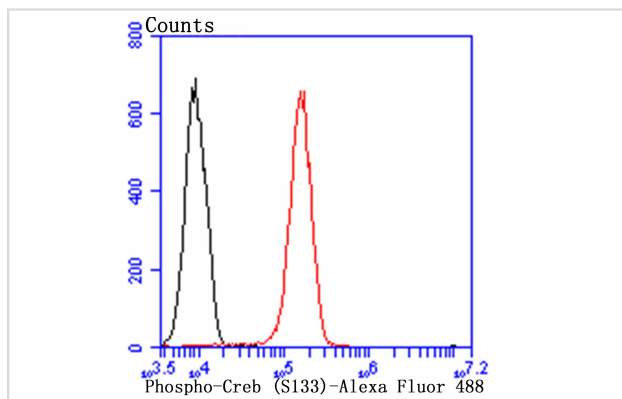
Immunohistochemical analysis of paraffin-embedded human colon cancer tissue using anti-Phospho-Creb (S133) antibody. Counter stained with hematoxylin.



ICC staining Phospho-Creb (S133) in SH-SY-5Y cells (green). The nuclear counter stain is DAPI (blue). Cells were fixed in paraformaldehyde, permeabilised with 0.25% Triton X100/PBS.



ICC staining Phospho-Creb (S133) in HUVEC cells (green). The nuclear counter stain is DAPI (blue). Cells were fixed in paraformaldehyde, permeabilised with 0.25% Triton X100/PBS.



Flow cytometric analysis of HUVEC cells with Phospho-Creb (S133) antibody at 1/100 dilution (red) compared with an unlabelled control (cells without incubation with primary antibody; black). Alexa Fluor 488-conjugated goat anti rabbit IgG was used as the secondary antibody.

Background

Phosphorylation-dependent transcription factor that stimulates transcription upon binding to the DNA cAMP response element (CRE), a sequence present in many viral and cellular promoters. Transcription activation is enhanced by the TORC coactivators which act independently of Ser-133 phosphorylation. Involved in different cellular processes including the synchronization of circadian rhythmicity and the differentiation of adipose cells.

References

Note: This product is for in vitro research use only