

CHD1L Rabbit mAb

Catalog No: #49886



Package Size: #49886-1 50ul #49886-2 100ul

Orders: order@signalwayantibody.com
Support: tech@signalwayantibody.com

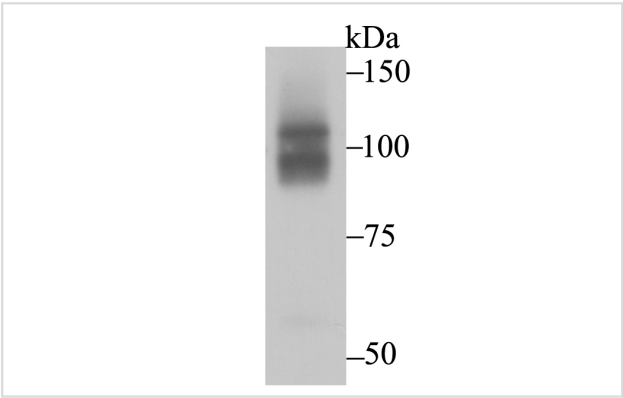
Description

Product Name	CHD1L Rabbit mAb
Host Species	Recombinant Rabbit
Clonality	Monoclonal antibody
Clone No.	JG35-44
Purification	ProA affinity purified
Applications	WB,IHC,FC
Species Reactivity	Hu, Ms
Immunogen Description	Recombinant protein within human CHD1L aa 600-800.
Other Names	ALC1 antibody Amplified in liver cancer 1 antibody Amplified in liver cancer protein 1 antibody chd1l antibody CHD1L_HUMAN antibody CHDL antibody Chromodomain helicase DNA binding protein 1 like antibody Chromodomain-helicase-DNA-binding protein 1-like antibody FLJ22530 antibody
Accession No.	Swiss-Prot#:Q86WJ1
Uniprot	Q86WJ1
GeneID	9557;
Calculated MW	101/90 kDa
Formulation	1*TBS (pH7.4), 1%BSA, 40%Glycerol. Preservative: 0.05% Sodium Azide.
Storage	Store at -20°C

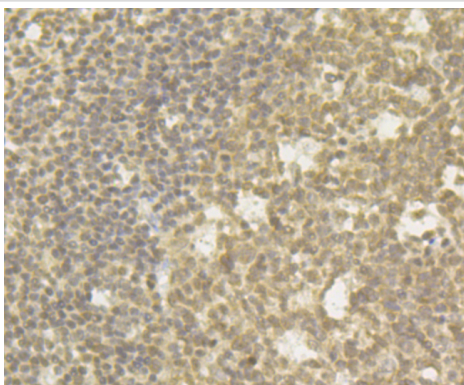
Application Details

WB: 1:500-1:1,000IHC: 1:50-1:100FC: 1:50-1:100

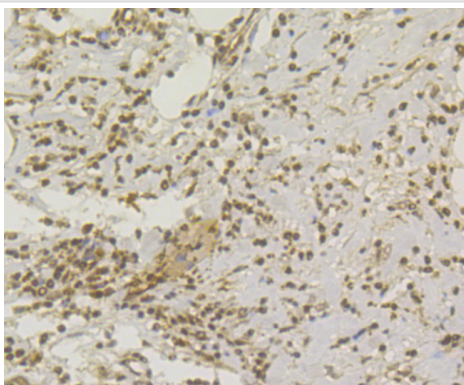
Images



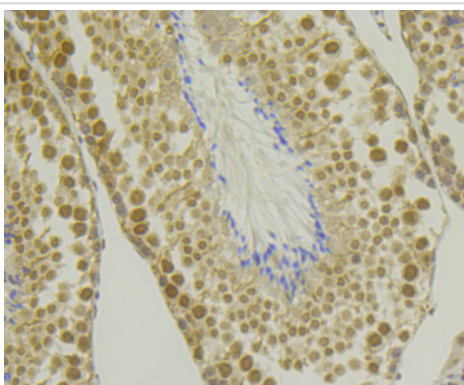
Western blot analysis of CHD1L on HepG2 cell using anti-CHD1L antibody at 1/1,000 dilution.



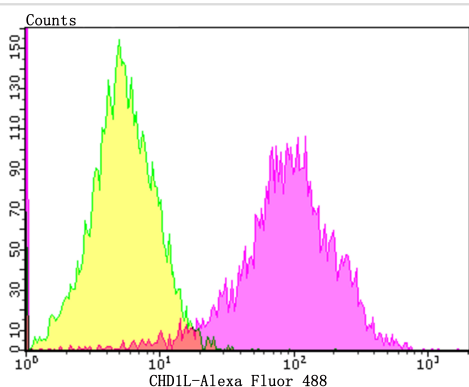
Immunohistochemical analysis of paraffin-embedded human tonsil tissue using anti-CHD1L antibody. Counter stained with hematoxylin. The section was pre-treated using heat mediated antigen retrieval with sodium citrate buffer (pH6) for 20 mins.



Immunohistochemical analysis of paraffin-embedded human colon cancer tissue using anti-CHD1L antibody. Counter stained with hematoxylin. The section was pre-treated using heat mediated antigen retrieval with sodium citrate buffer (pH6) for 20 mins.



Immunohistochemical analysis of paraffin-embedded mouse testis tissue using anti-CHD1L antibody. Counter stained with hematoxylin. The section was pre-treated using heat mediated antigen retrieval with sodium citrate buffer (pH6) for 20 mins.



Flow cytometric analysis of HepG2 cells with CHD1L antibody at 1/100 dilution (purple) compared with an unlabelled control (cells without incubation with primary antibody; yellow). Alexa Fluor 488-conjugated goat anti-rabbit IgG was used as the secondary antibody.

Background

CHD1L (Chromodomain helicase DNA-binding protein 1-like) is a 897 amino acid protein encoded by the human gene CHD1L. The CHD family of proteins are ATP-dependent chromatin remodeling enzymes, which combine chromodomains, with SWI2/SNF2 ATPase/helicase motifs and DNA-binding capability. Chromodomains are protein regions of about 40-50 amino acid residues found in proteins associated with chromatin remodeling and manipulation. The domain is highly conserved among both plants and animals and is found in a large variety of proteins from many genomes. CHD1L and CHD1 share most homology within two internal helicase domains.

References

Note: This product is for in vitro research use only