

CENPC Rabbit mAb

Catalog No: #49896



Package Size: #49896-1 50ul #49896-2 100ul

Orders: [order@signalwayantibody.com](mailto:order@signalwayantibody.com)  
Support: [tech@signalwayantibody.com](mailto:tech@signalwayantibody.com)

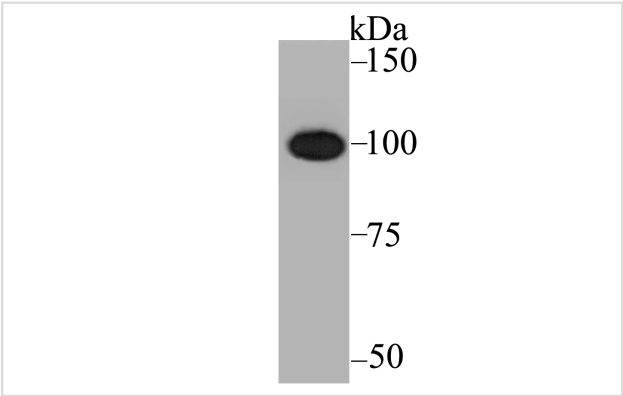
Description

Product Name	CENPC Rabbit mAb
Host Species	Recombinant Rabbit
Clonality	Monoclonal antibody
Clone No.	JG36-15
Purification	ProA affinity purified
Applications	WB,ICC,IF,IHC,FC,IP
Species Reactivity	Hu
Immunogen Description	Recombinant protein within human CENPC aa 400-600.
Other Names	CENP-C 1 antibody CENP-C antibody CENPC_HUMAN antibody CENPC1 antibody Centromere autoantigen C antibody Centromere autoantigen C1 antibody Centromere protein C 1 antibody Centromere protein C antibody hcp-4 antibody ICEN7 antibody Interphase centromere complex protein 7 antibody MIF2 antibody
Accession No.	Swiss-Prot#:Q03188
Uniprot	Q03188
GeneID	1060;
Calculated MW	107 kDa
Formulation	1*TBS (pH7.4), 1%BSA, 40%Glycerol. Preservative: 0.05% Sodium Azide.
Storage	Store at -20°C

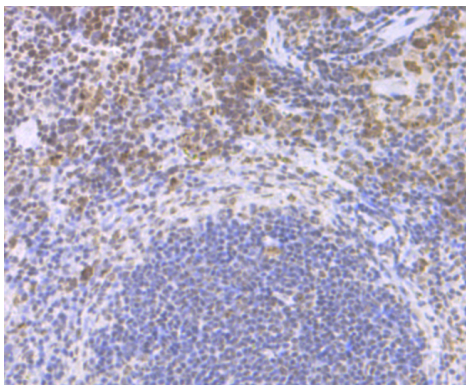
Application Details

WB: 1:500-1:2,000 IHC: 1:50-1:200 ICC: 1:50-1:200IP: 1:10-1:50 FC: 1:50-1:200

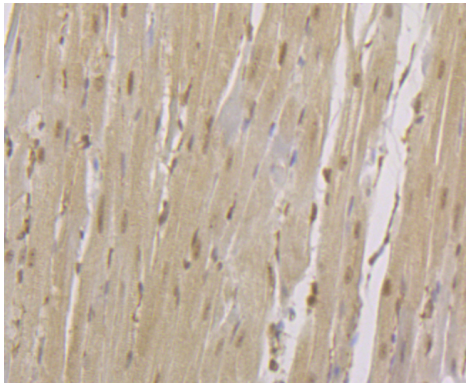
Images



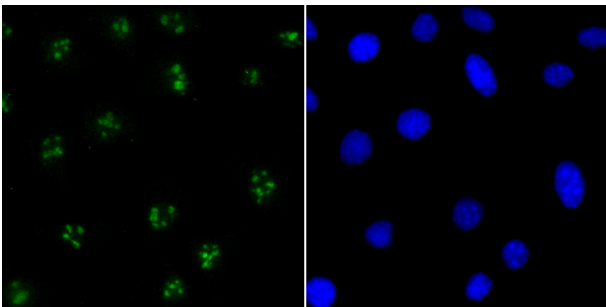
Western blot analysis of CENPC on K562 cell lysate using anti-CENPC antibody at 1/1,000 dilution.



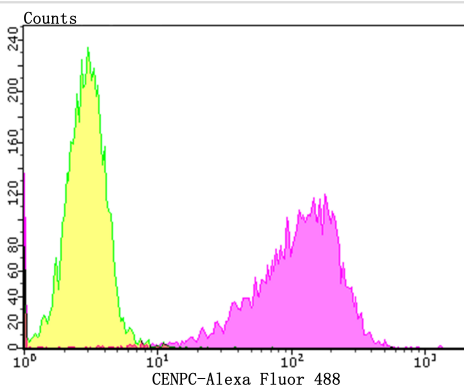
Immunohistochemical analysis of paraffin-embedded mouse spleen tissue using anti-CENPC antibody. Counter stained with hematoxylin. The section was pre-treated using heat mediated antigen retrieval with sodium citrate buffer (pH6) for 20 mins.



Immunohistochemical analysis of paraffin-embedded rat heart tissue using anti-CENPC antibody. Counter stained with hematoxylin. The section was pre-treated using heat mediated antigen retrieval with sodium citrate buffer (pH6) for 20 mins.



ICC staining CENPC in SH-SY-5Y cells (green). The nuclear counter stain is DAPI (blue). Cells were fixed in paraformaldehyde, permeabilised with 0.25% Triton X100/PBS.



Flow cytometric analysis of K562 cells with CENPC antibody at 1/100 dilution (yellow) compared with an unlabelled control (cells without incubation with primary antibody; purple). Alexa Fluor 488-conjugated goat anti-rabbit IgG was used as the secondary antibody.

## Background

A replicated chromosome includes two kinetochores that control chromosome segregation during mitosis. The evolutionarily conserved Centromere Protein-C, CENP-C, is a kinetochore assembly protein. CENP-C is located on the fibers of the kinetochore and constitutes a kinetochore organizing center that tightly associates with DNA. CENP-C is necessary for the formation of a functional centromere, which indicates that CENP-C is important for mitotic progression. In addition, CENP-C is lost from centromeres during herpes simplex virus 1 infection, causing substantial structural changes in the kinetochore, which suggests that the structure of CENP-C is regulated during the cell cycle.

## References

---

Note: This product is for in vitro research use only